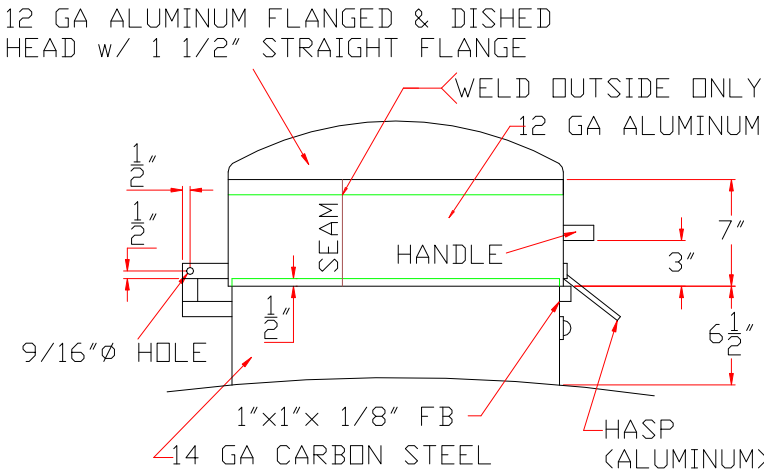
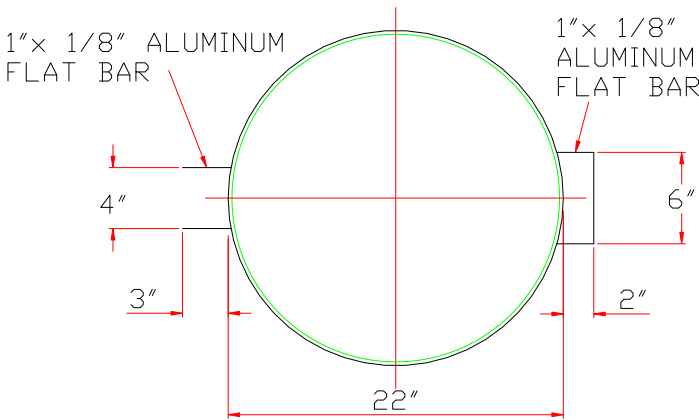
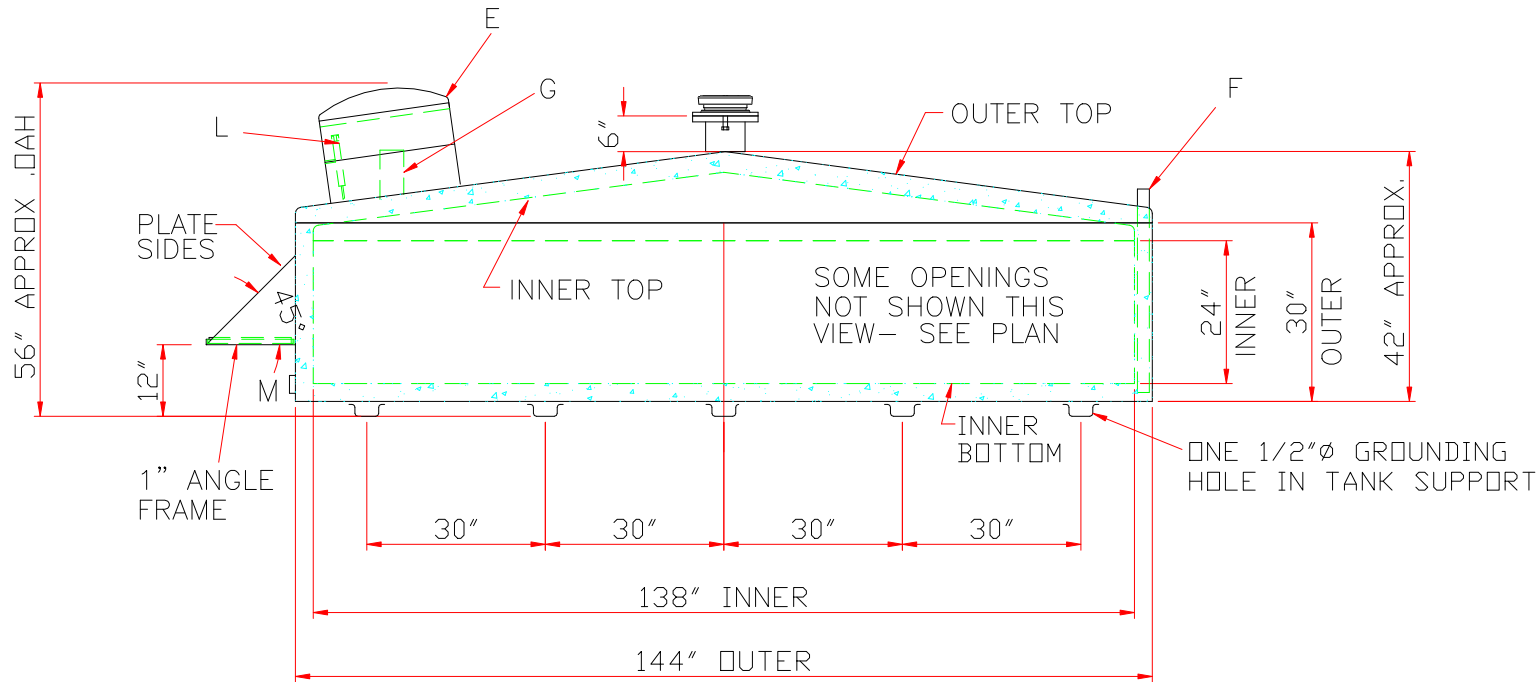
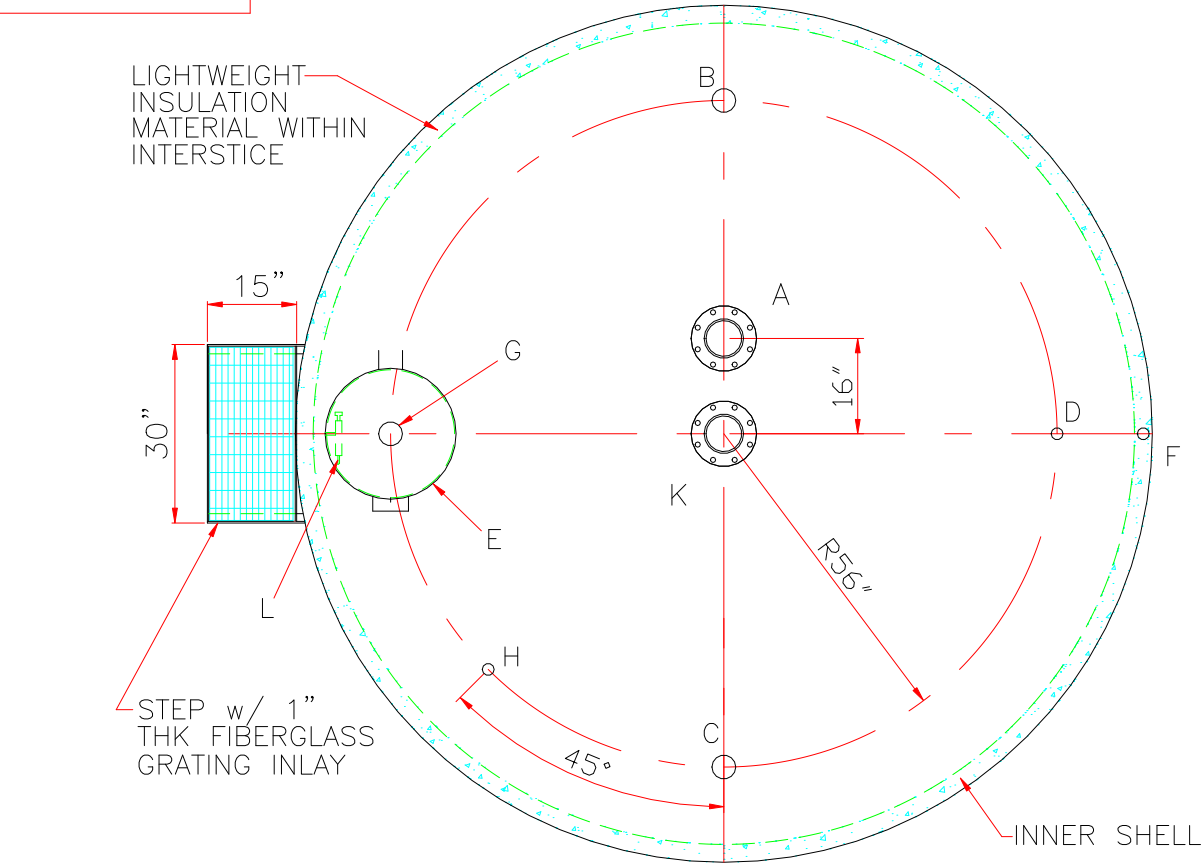


NOTE: ALL RIGHTS RESERVED. THIS DRAWING MUST NOT BE REPRODUCED IN ANY FORM WITHOUT THE WRITTEN PERMISSION OF HIGHLAND TANK. HIGHLAND TANK SHALL BE RESPONSIBLE ONLY FOR ITEMS INDICATED ON THIS FABRICATION DRAWING UNLESS OTHERWISE NOTED. CUSTOMER IS RESPONSIBLE FOR VERIFYING CORRECTNESS OF SIZE AND LOCATION OF FITTINGS, ACCESSORIES, AND COATINGS SHOWN ON THIS DRAWING.

TOUCH UP OF FINISHED PAINT IS REQUIRED BY INSTALLATION CONTRACTOR. TOUCH UP PAINT SHIPPED WITH TANK.

NOTE: STRIKER PLATES ARE NOT SUPPLIED ON FIREGUARDS UNLESS SPECIFIED.



NOTE- DO NOT CUT HOLE IN HEAD FOR CHAMBER, WELD CHAMBER TO OUTER HEAD

FILL CONNECTION NOT SHOWN, SEE TANK DRAWING

DETAIL E

- SHIP LOOSE (INSTALLATION BY OTHERS)
- (1) KRUEGER GAUGE
 - (1) 2"Øx 96" LONG GALVANIZED PIPE (TBE)
 - (1) 2" MUSHROOM VENT
 - (2) 6" FLANGED EMERGENCY VENTS

SPECIFICATIONS

CAPACITY – 1500 GALLONS

TANK MATERIAL – MILD CARBON STEEL

THICKNESS – INNER & OUTER TOP: 10 GA

THICKNESS – INNER & OUTER SHELL: 7 GA

THICKNESS – INNER & OUTER BOTTOM: 1/4"

INNER & OUTER TOP– STD FLANGED CONE

CONSTRUCTION – LAP WELD OUTSIDE ONLY

TANK TEST – PER UL 2085

INT. FINISH – NONE

EXT. FINISH – SP6 BLAST, FIREGUARD WHITE PAINT SYSTEM

TANK SUPPORTS– 7 GA x 4" WIDE X 2" DEEP PRESS BROKE "U"

LABEL – UL 2085 AND FIREGUARD PER STI

SPECIFIC GRAVITY = 1.0

FITTING LEGEND

A	6" FFSD 150# FLANGE – PRIMARY EMERGENCY VENT USE ONLY
B	3" FG CPLG (SUCTION)
C	4" FG CPLG (SPARE)
D	2" FG CPLG (NORMAL VENT)
E	22"Ø CHAMBER WITH HINGED ALUMINUM LID, SEE DETAIL E (ACCESS TO FILL)
F	2" INTERSTITIAL MONITOR PIPE– END WITH MALE NPT
G	4" FG CPLG WITH LOCKING FILL CAP (FILL)
H	2" FG CPLG (GAUGE)
J	–
K	6" FFSD 150# FLANGE THROUGH OUTER SHELL ONLY, MARK WITH SPECIAL WARNING LABEL INTERSTITIAL EMERGENCY VENT USE ONLY
L	SINGLE STROKE HANDPUMP & BRK'T
M	2" FITTING FOR MFG PURPOSE ONLY



Highland Tank

UNLESS NOTED, TOLERANCES ARE +/- 1"

1,500 GAL FIRE HOPPER™

CUSTOMER:

PROJECT:

QUOTE NO:

CHK'D BY:

SCALE:
3/8"=1'-0"

DATE:

DWG. BY:

DWG. NO:

01500FGH