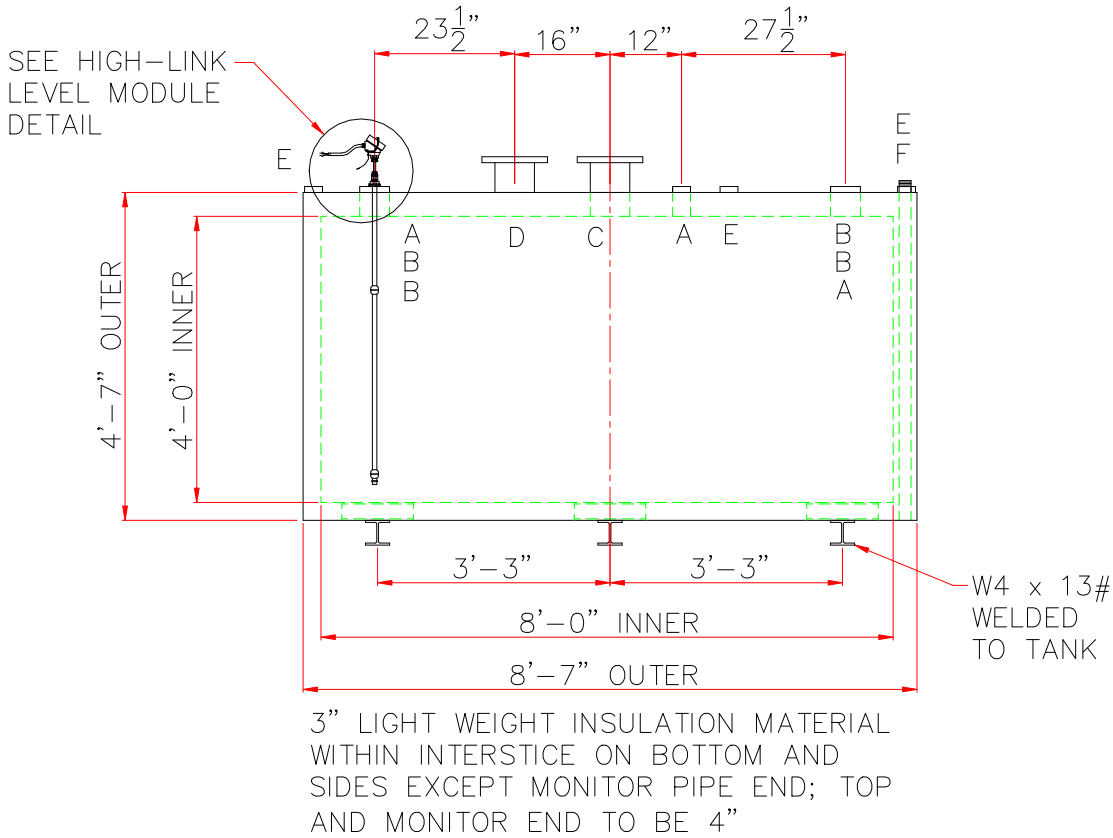
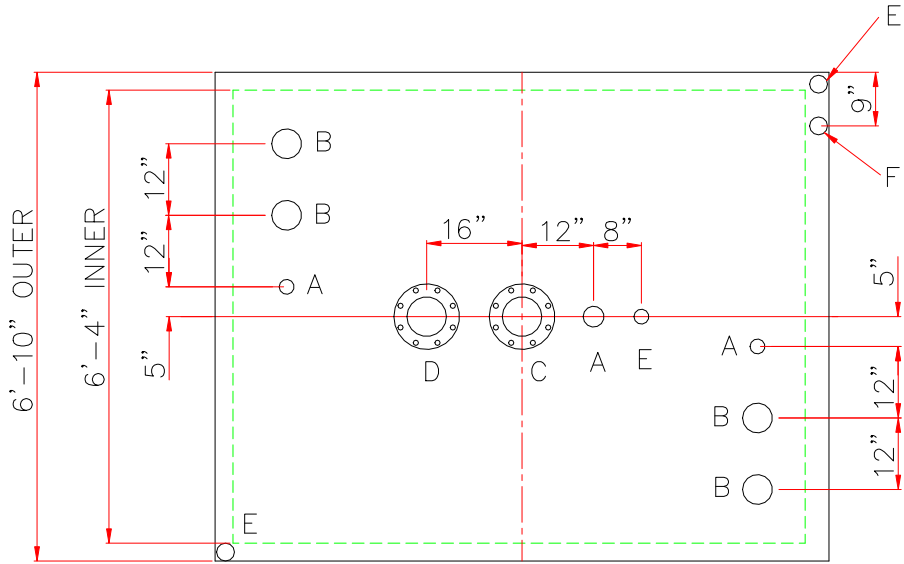


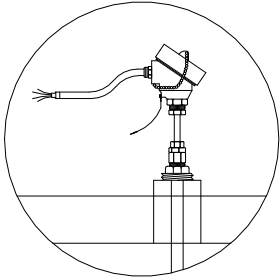
NOTE: ALL RIGHTS RESERVED. THIS DRAWING MUST NOT BE REPRODUCED IN ANY FORM WITHOUT THE WRITTEN PERMISSION OF HIGHLAND TANK®. HIGHLAND TANK® SHALL BE RESPONSIBLE ONLY FOR ITEMS INDICATED ON THIS FABRICATION DRAWING UNLESS OTHERWISE NOTED. CUSTOMER IS RESPONSIBLE FOR VERIFYING CORRECTNESS OF SIZE AND LOCATION OF FITTINGS, ACCESSORIES, AND COATINGS SHOWN ON THIS DRAWING.

TOUCH UP OF FINISHED PAINT IS REQUIRED BY INSTALLATION CONTRACTOR. TOUCH UP PAINT SHIPPED WITH TANK.

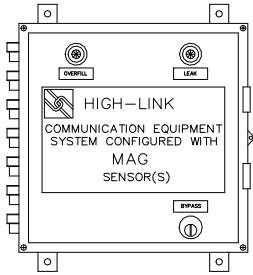
SHIP LOOSE: (INSTALLATION ON SITE BY OTHERS)  
(2) 6" FLANGED EMERGENCY VENT  
  
(1) HIGH-LINK LEVEL SHIELD MODEL# LS\_XEXD\_1500 69" LONG & BUSHING WITH LS\_LINK\_GPRS COMMUNICATION BOX.



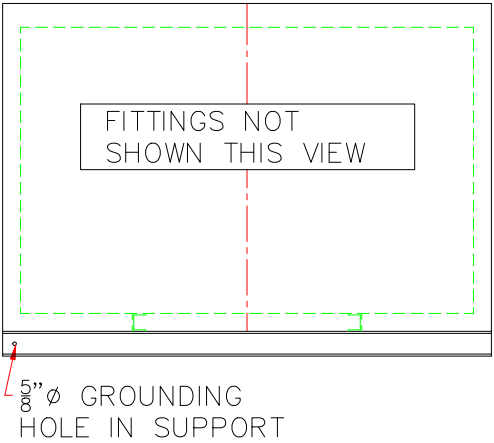
NOTES:  
STRIKER PLATES ARE NOT SUPPLIED ON FIREGUARDS® UNLESS SPECIFIED



HIGH-LINK LEVEL SHIELD DETAIL



COMMUNICATION BOX DETAIL



DESIGN DATA	
CAPACITY :	1,500 GALLONS
TYPE:	FIREGUARD® RECTANGULAR
FIREGUARD® IS A TRADEMARK OF THE STEEL TANK INSTITUTE	
NO. REQ.	--
OPERATING PRESSURE	-- ATMOSPHERIC
TANK MATERIAL	-- MILD CARBON STEEL
SPECIFIC GRAVITY	= 1.0
THICKNESS -- INNER	-- 7 GA
THICKNESS -- OUTER	-- 7 GA
MIN. GAUGE OR THICKNESS (PER U.L. 2085)	
CONSTRUCTION -- INNER	-- LAP WELD OUTSIDE ONLY
CONSTRUCTION -- OUTER	-- LAP WELD OUTSIDE ONLY
TANK TEST -- INNER	-- 1.5 TO 3 PSIG
TANK TEST -- OUTER	-- 1.5 TO 3 PSIG
INT. FINISH	-- NONE
EXT. FINISH	-- SP-6 BLAST, FINISH PAINT WHITE
LABEL--	UL 2085 AND FIREGUARD® PER sti

LEGEND	
A	2" FEMALE FIREGUARD COUPLING
B	4" FEMALE FIREGUARD COUPLING
C	6" FFSO 150# FLANGE -- PRIMARY EMERGENCY VENT
D	6" FFSO 150# FLANGE THROUGH OUTER SHELL ONLY, MARK WITH SPECIAL WARNING LABEL INTERSTITIAL EMERGENCY VENT USE ONLY
E	2" FITTING THROUGH OUTER SHELL ONLY WITH CAST IRON PLUG -- FOR MFG USE ONLY
F	2" INTERSTITIAL MONITOR PIPE -- MALE NPT END

		<b>Highland Tank</b>	
UNLESS NOTED, TOLERANCES ARE +/- 1"			
1,500 GAL REC. FIREGUARD®			
PATENT: 5,695,089    PATENT: 5,809,650			
CUSTOMER:			
PROJECT:			
QUOTE NO:			CHK'D BY:
SCALE: 3/8"=1'-0"	DATE:	DWG. BY:	DWG. NO: 01500FGREC