

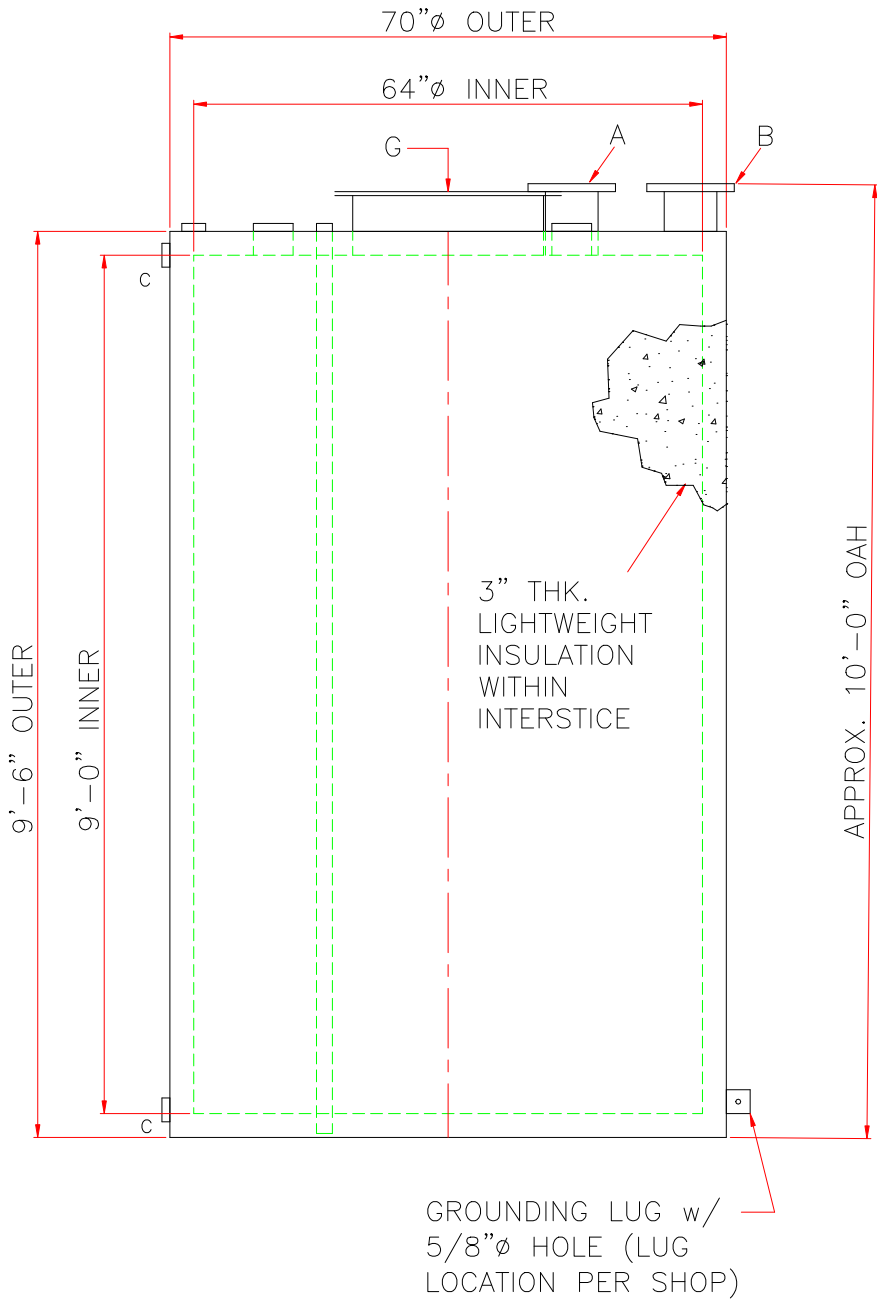
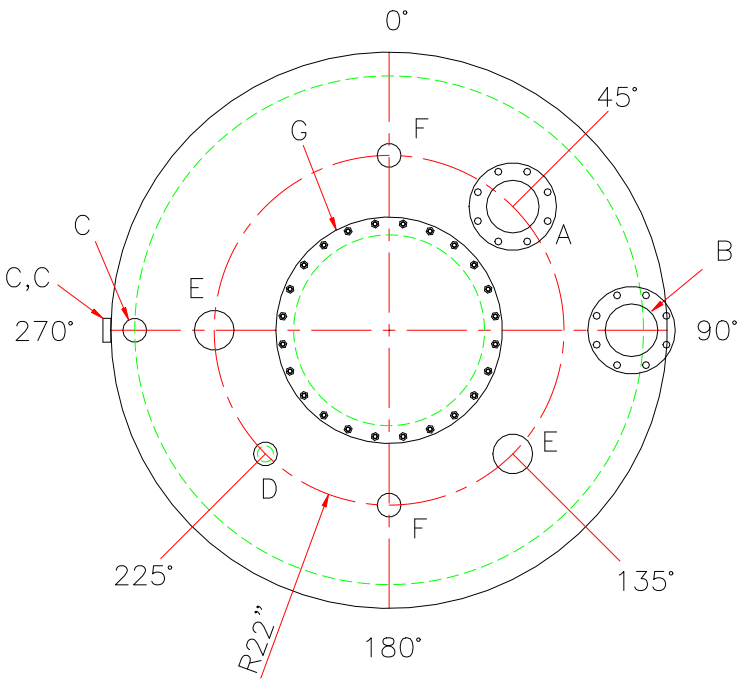
NOTE: ALL RIGHTS RESERVED. THIS DRAWING MUST NOT BE REPRODUCED IN ANY FORM WITHOUT THE WRITTEN PERMISSION OF HIGHLAND TANK®. HIGHLAND TANK® SHALL BE RESPONSIBLE ONLY FOR ITEMS INDICATED ON THIS FABRICATION DRAWING UNLESS OTHERWISE NOTED. CUSTOMER IS RESPONSIBLE FOR VERIFYING CORRECTNESS OF SIZE AND LOCATION OF FITTINGS, ACCESSORIES, AND COATINGS SHOWN ON THIS DRAWING.

TOUCH UP OF FINISHED PAINT IS REQUIRED BY INSTALLATION CONTRACTOR. TOUCH UP PAINT SHIPPED WITH TANK.

NOTES

- SEE PLAN VIEW FOR TRUE ORIENTATION AND LOCATION OF FITTING
- LIFTING LUGS FOR UNLOADING UNIT & STANDING UNIT UPRIGHT TO BE PLACED AS NEEDED BY FABRICATION SHOP
- A 3x3x¼" STEEL GROUNDING LUG WITH A 5⁄8"Ø HOLE IN CENTER TO BE PLACED ON SHELL AT BOTTOM OF TANK IN LINE WITH LIFTING LUGS

SHIP LOOSE: (INSTALLATION ON SITE BY OTHERS)
(2) 6" FLANGED EMERGENCY VENTS




SPECIFICATIONS

CAPACITY – 1500 GALLONS
TANK MATERIAL – MILD CARBON STEEL THICKNESS – INNER – HEADS– /UL2085; SHELL – /UL2085 THICKNESS – OUTER – HEADS – /UL2085; SHELL – /UL2085
CONSTRUCTION – INNER – LAP WELD OUTSIDE ONLY CONSTRUCTION – OUTER – LAP WELD OUTSIDE ONLY
TANK TEST – INNER: 2 PSIG OUTER: +2 PSIG OR 13"hg VACUUM
INT. FINISH – NONE
EXT. FINISH – SSPC SP6 BLAST, WHITE PAINT SYSTEM
LABEL – UL 2085 AND FIREGUARD PER sti
SPECIFIC GRAVITY = 1.0

FITTING LEGEND

A	6" FFSO 150# FLANGE – PRIMARY EMERGENCY VENT
B	6" FFSO 150# FLANGE THROUGH OUTER SHELL ONLY, MARK WITH SPECIAL WARNING LABEL INTERSTITIAL EMERGENCY VENT USE ONLY
C	2" FITTING THROUGH OUTER SHELL ONLY WITH CAST IRON PLUG – MFG USE ONLY
D	2" MONITOR PIPE WITH MALE NPT END
E	4" FEMALE FG COUPLING
F	2" FEMALE FG COUPLING
G	24"Ø TIGHT BOLT MANWAY w/1⁄8" FIBREFLEX GASKET MATERIAL

LOCATE GROUNDING LUG IN LINE WITH LIFT LUG

△					
		Highland Tank			
UNLESS NOTED, TOLERANCES ARE +/- 1"					
1500 GAL 64"Ø VERTICAL FIREGUARD®					
CUSTOMER:					
PROJECT:					
QUOTE NO:				CHK'D BY:	
SCALE: 1/2"=1'-0"		DATE:		DWG. BY:	
				DWG. NO: 01500FG64VERT	