

## GENERAL SPECIFICATIONS

NO. REQ'D: (1)  
 CAPACITY: 1500 GALLONS  
 TYPE: UNDERGROUND, DOUBLE WALL, HIGHGUARD  
 TRIPLE BASIN OIL SAND INTERCEPTOR TANK  
 MATERIAL: MILD CARBON STEEL  
 FLOW RATE: 150 GPM  
 GAUGE: BASED ON 60" BURIAL

	INNER	OUTER
SHELL-	7 GA.	10 GA.
HEADS-	7 GA.	10 GA.

SURFACE PREP:  
 SSPC NO.6 BLAST ALL EXTERIOR SURFACES

COATING:	MATERIAL	THICKNESS
EXTERIOR-	POLYURETHANE	(75 MILS)
INTERIOR-	NONE	

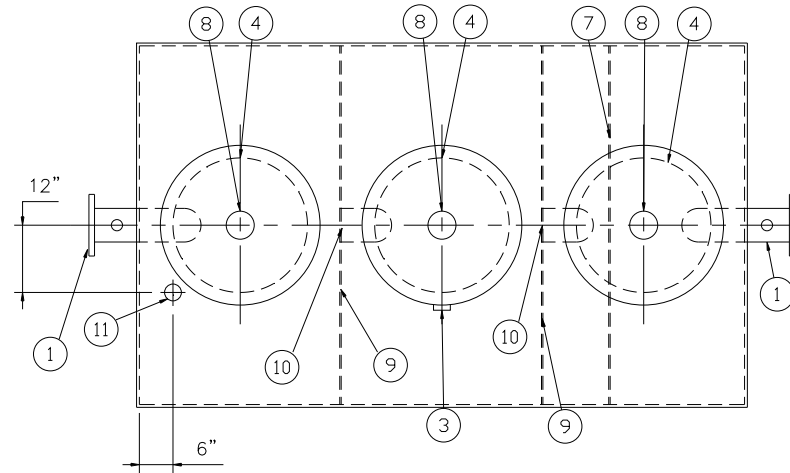
OPERATING PRESSURE: ATMOSPHERIC

## NOTES

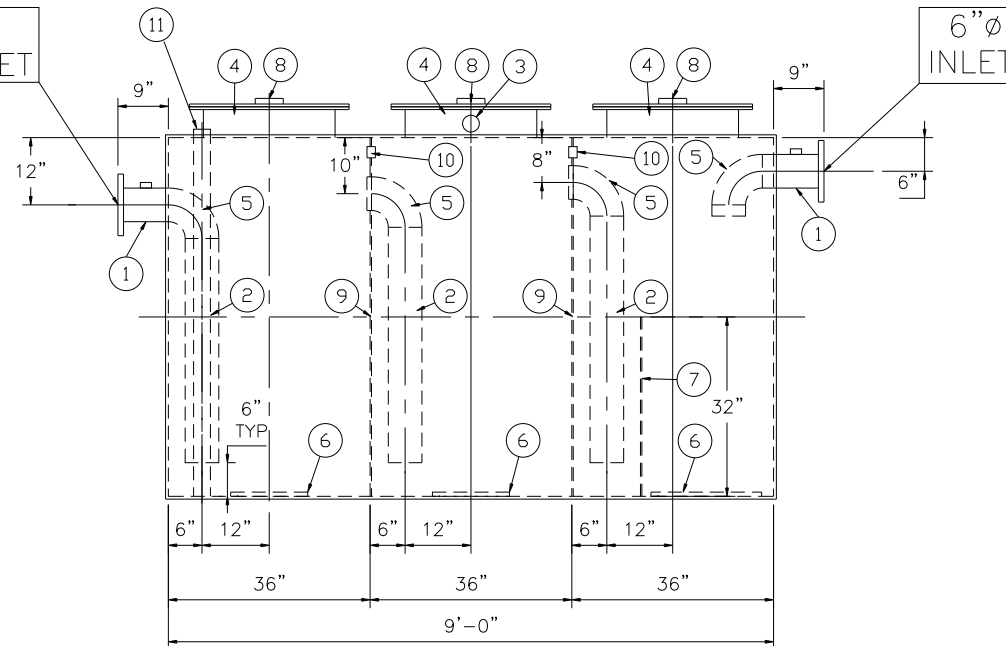
- POLYURETHANE HIGHGUARD TANK IS NOT APPROVED FOR THE STORAGE OF HEATED PRODUCTS
- ALL VENT PIPING BY INSTALLER
- 15000 VOLT SPARK TEST PROVIDED AT FACTORY

## PROVIDED EQUIPMENT

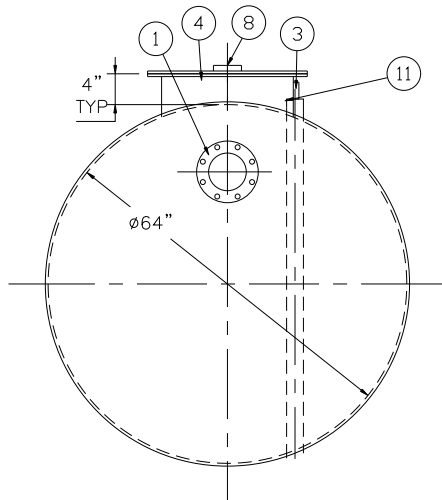
- 150# R.F.S.O. FLANGE W/ 2"  $\phi$  FNPT FTG. FOR VENT
- STEEL DOWNCOMER PIPE
- 2"  $\phi$  FNPT FTG. FOR VENT
- 24"  $\phi$  MANHOLE
- 6"  $\phi$  STEEL ELBOW
- STRIKER PLATES
- SLUDGE BAFFLE
- 4"  $\phi$  FNPT FTG. FOR GAUGE
- 64"  $\phi$  x 7GA. BULKHEAD
- 2"  $\phi$  OPENING IN BULKHEAD FOR VENTING
- 2"  $\phi$  FNPT FTG. W/ STEEL INTERNAL PIPE FOR LEAK DETECTION



PLAN VIEW



ELEVATION VIEW



END VIEW

## REVISIONS



# Highland Tank

1500 GALLON TRIPLE BASIN INTERCEPTOR  
 DOUBLE WALL, HIGHGUARD

CUSTOMER:

PROJECT:

QUOTE NO:

CHK'D BY:

SCALE: 1/2"=1'-0"

DATE: 8-17-05

DWG. BY:

DWG. NO.:

01500HGDWINTTB

UNLESS OTHERWISE SPECIFIED DIMENSIONS ARE IN INCHES  
 TOLERANCES ARE + OR - 1"

NOTE :  
 ALL RIGHTS RESERVED. THIS DRAWING OR ANY PART THEREOF MUST NOT BE REPRODUCED IN ANY FORM WITHOUT THE WRITTEN PERMISSION OF HIGHLAND TANK.  
 HIGHLAND TANK SHALL BE RESPONSIBLE ONLY FOR ITEMS INDICATED ON THIS FABRICATION DRAWING UNLESS OTHERWISE NOTED. CUSTOMER IS RESPONSIBLE FOR VERIFYING CORRECTNESS OF SIZE / LOCATION OF FITTINGS , ACCESSORIES & COATINGS SHOWN ON THIS DRAWING