

## GENERAL SPECIFICATIONS

NO. REQ'D: (1)  
CAPACITY: 1500 GALLONS  
TYPE: UNDERGROUND, SINGLE WALL, HIGHGUARD  
DOUBLE BASIN OIL SAND INTERCEPTOR TANK  
MATERIAL: MILD CARBON STEEL  
FLOW RATE: 150 GPM  
GAUGE: BASED ON 60" BURIAL  
SHELL— 7 GA.  
HEADS— 7 GA.  
SURFACE PREP:  
SSPC NO.6 BLAST ALL EXTERIOR SURFACES

COATING:	MATERIAL	THICKNESS
EXTERIOR—	POLYURETHANE	(75 MILS)
INTERIOR—	NONE	

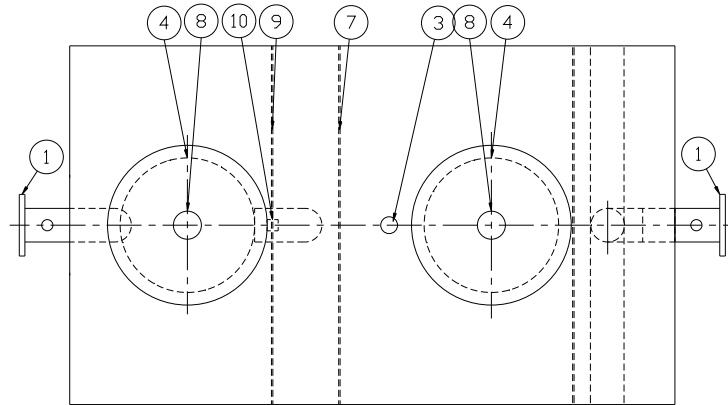
OPERATING PRESSURE: ATMOSPHERIC

## NOTES

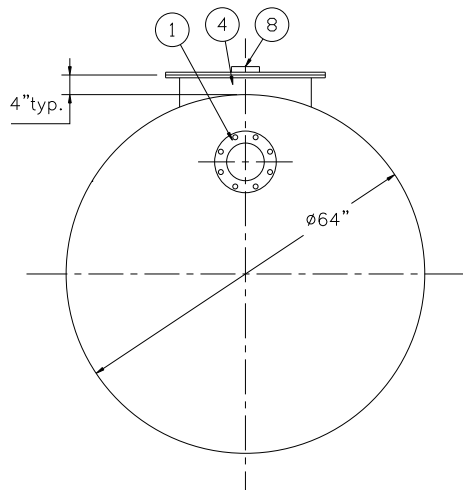
- POLYURETHANE HIGHGUARD TANK IS NOT APPROVED FOR THE STORAGE OF HEATED PRODUCTS
- ALL VENT PIPING BY INSTALLER
- 15000 VOLT SPARK TEST PROVIDED AT FACTORY

## PROVIDED EQUIPMENT

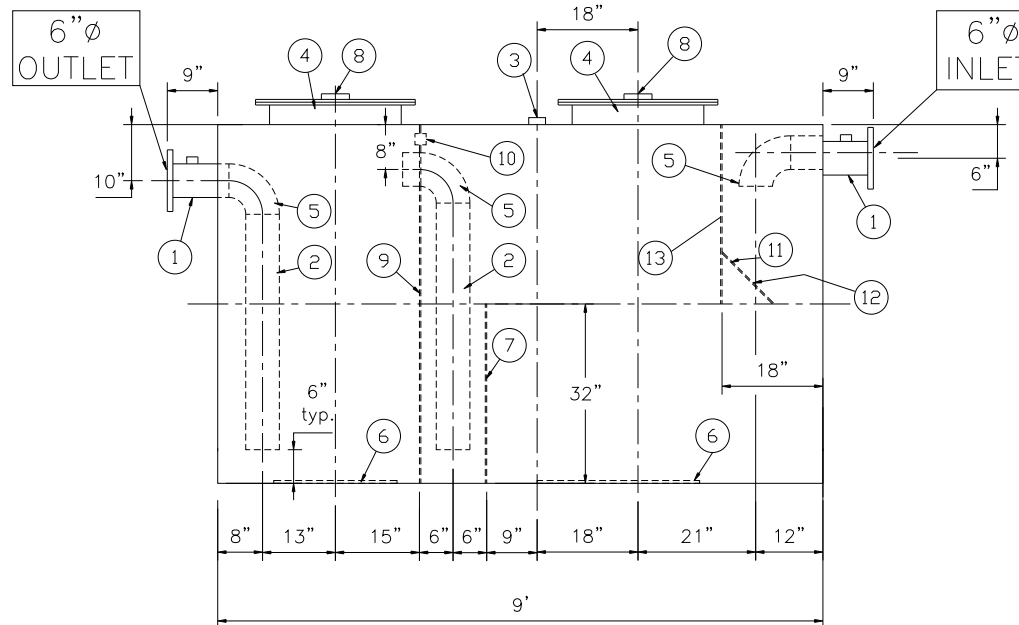
- 150# R.F.S.O. FLANGE W/ 2"  $\phi$  FNPT FTG. FOR VENT
- STEEL DOWNCOMER PIPE
- 2"  $\phi$  FNPT FTG. FOR VENT
- 24"  $\phi$  MANHOLE
- 6"  $\phi$  STEEL ELBOW
- STRIKER PLATES
- SLUDGE BAFFLE
- 4"  $\phi$  FNPT FTG. FOR GAUGE
- 64"  $\phi$  x 7GA. BULKHEAD
- 2"  $\phi$  OPENING IN BULKHEAD FOR VENTING
- VELOCITY HEAD DIFFUSION BAFFLE
- WEAR PLATE
- UNDERFLOW BAFFLE



PLAN VIEW



END VIEW



ELEVATION

## REVISIONS



# Highland Tank

1500 GALLON DOUBLE BASIN INTERCEPTOR  
SINGLE WALL, HIGHGUARD

CUSTOMER:

PROJECT:

QUOTE NO:

CHK'D BY:

SCALE:  
1/2"=1'-0"

DATE:  
8-15-05

DWG. BY:

DWG. NO.:

01500HGSWINTDB

UNLESS OTHERWISE SPECIFIED DIMENSIONS ARE IN INCHES  
TOLERANCES ARE + OR - 1"

NOTE :  
ALL RIGHTS RESERVED. THIS DRAWING OR ANY PART THEREOF MUST NOT BE REPRODUCED IN ANY FORM WITHOUT THE WRITTEN PERMISSION OF HIGHLAND TANK.  
HIGHLAND TANK SHALL BE RESPONSIBLE ONLY FOR ITEMS INDICATED ON THIS FABRICATION DRAWING UNLESS OTHERWISE NOTED. CUSTOMER IS RESPONSIBLE FOR VERIFYING CORRECTNESS OF SIZE / LOCATION OF FITTINGS , ACCESSORIES & COATINGS SHOWN ON THIS DRAWING