

GENERAL SPECIFICATIONS

NO. REQ'D: (1)
 CAPACITY: 1500 GALLON
 TYPE: HYDRO RAINWATER COLLECTION, HIGHGUARD, SINGLE WALL
 MATERIAL: MILD CARBON STEEL

GAUGE:
 SHELL- 7 GA.
 HEADS- 7 GA.

(BASED ON A 60" MAX. BURIAL DEPTH)

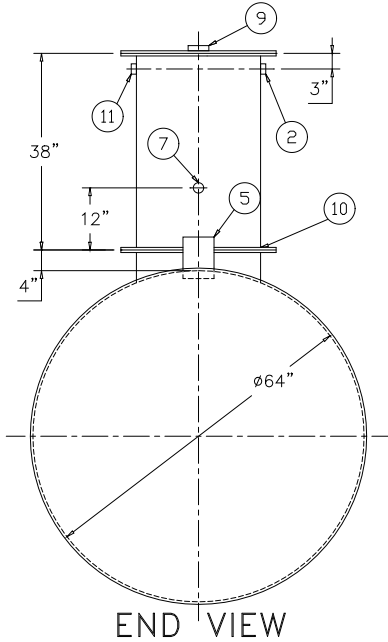
SURFACE PREP:
 SSPC NO.6 BLAST ALL EXTERIOR SURFACES

COATING:	MATERIAL	THICKNESS
EXTERIOR-	POLYURETHANE	(75 MILS)
INTERIOR-	NONE	

CONSTRUCTION : LAP FIT & WELD ALL EXTERIOR SEAMS
 OPERATING PRESSURE : ATMOSPHERIC

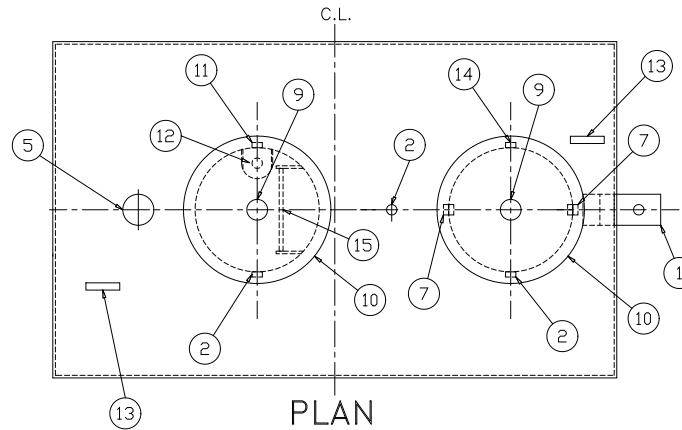
NOTES:

- POLYURETHANE HIGHGUARD TANK IS NOT APPROVED FOR THE STORAGE OF HEATED PRODUCTS
- ALL VENT PIPING BY INSTALLER
- 15000 VOLT SPARK TEST PROVIDED AT FACTORY
- LIFTING LUGS PLACED AS NEEDED PER FAB SHOP

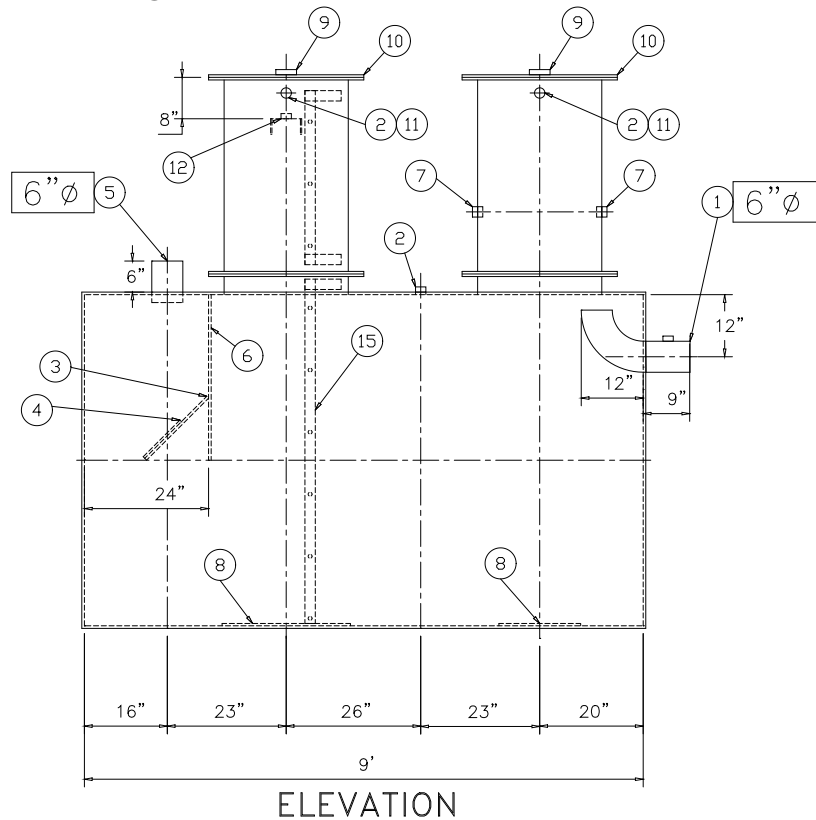


END VIEW

NOTE :
 ALL RIGHTS RESERVED. THIS DRAWING OR ANY PART THEREOF MUST NOT BE REPRODUCED IN ANY FORM WITHOUT THE WRITTEN PERMISSION OF HIGHLAND TANK.
 HIGHLAND TANK SHALL BE RESPONSIBLE ONLY FOR ITEMS INDICATED ON THIS FABRICATION DRAWING UNLESS OTHERWISE NOTED. CUSTOMER IS RESPONSIBLE FOR VERIFYING CORRECTNESS OF SIZE / LOCATION OF FITTINGS , ACCESSORIES & COATINGS SHOWN ON THIS DRAWING



PLAN



ELEVATION

PROVIDED EQUIPMENT

- 6"Ø PIPE STUB W/ 2" NPT FOR VENT (OVERFLOW SKIMMER)
- 2"Ø FTG. FOR VENT
- VELOCITY HEAD DIFFUSION BAFFLE
- WEAR PLATE
- 6"Ø PIPE STUB (INLET)
- UNDERFLOW BAFFLE
- 2"Ø FULL CPLG. FOR PUMP MOUNTING
- STRIKER PLATES
- 4"Ø FTG. FOR GAUGE WITH PLUG
- 24"Ø MANWAY WITH BOLT-ON EXTENSION SHIPPED LOOSE
- 2"Ø FTG. FOR LEVEL SENSOR CONDUIT
- 2"Ø FTG. W/ MOUNT FOR LEVEL SENSOR
- LIFTING LUG
- 2"Ø FTG. FOR PUMP CONDUIT
- HIGHLAND STANDARD INTERNAL LADDER

REVISIONS



Highland Tank

U.S. Patent #4,722,800 Canadian Patent # 1,296,263
 #6,606,224 # 2,389,065

1500 HYDRO RAINWATER COLLECTION
 HIGHGUARD, SINGLE WALL

CUSTOMER:

PROJECT:

QUOTE NO:

CHK'D BY:

SCALE: 1/2"=1'-0"	DATE: 4/16/10	DWG. BY:	DWG. NO.: 01500HGSHWRC
----------------------	------------------	----------	---------------------------