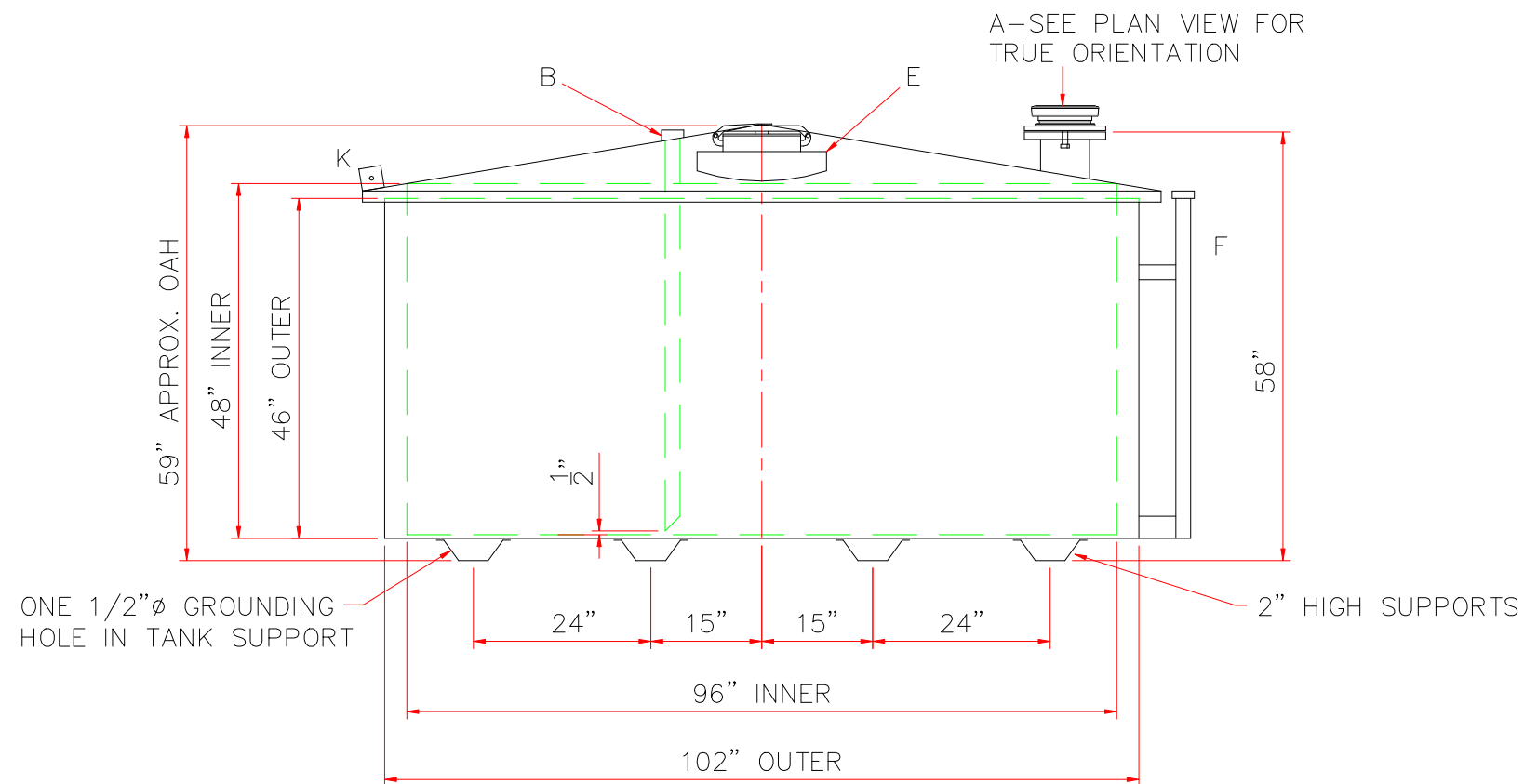
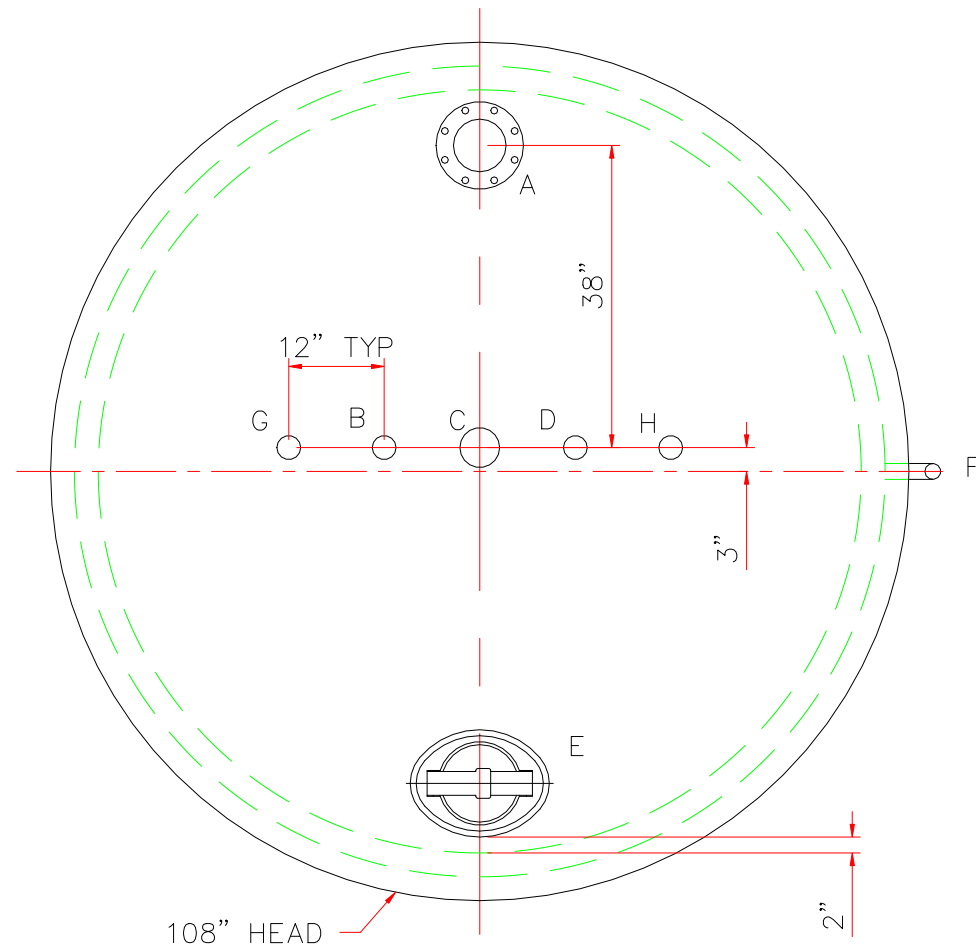


TOUCH UP OF FINISHED PAINT IS
REQUIRED BY INSTALLATION
CONTRACTOR. TOUCH UP PAINT SHIPPED
WITH TANK.



DESIGN DATA	LEGEND	
CAPACITY –1,500 GALLONS	A	6" FFSO 150# FLANGE – EMERGENCY VENT USE
NO. REQ. – –	B	2" HALF COUPLING WITH QUICK CONNECT & DROP PIPE TO WITHIN 1/2" OF TANK BOTTOM.
OPERATING PRESSURE –ATMOSPHERIC	C	4" HALF COUPLING (SPARE)
SPECIFIC GRAVITY = 1.0	D	2" HALF COUPLING (NORMAL VENT)
TANK MATERIAL – MILD CARBON STEEL	E	12" x 16" MANWAY WITH BETT'S 10"Ø QUICK OPEN FILL IN COVER.
THICKNESS – TOP: 10 GA FLANGED CONE OR STD. FLANGED & DISHED	F	2" MONITOR PIPE
THICKNESS – BALANCE OF TANK– 12 GA	G	2" HALF COUPLING (SPARE)
CONSTRUCTION – TANK – LAP WELD OUTSIDE ONLY (INNER TANK IS NOT ATTACHED TO OUTER TUB)	H	2" HALF COUPLING (SPARE)
CONSTRUCTION– TUB – LAP WELD OUTSIDE ONLY	J	–
TANK TEST – TANK ONLY – 5 PSIG	K	3" x 3" PLATE w/ 1/2"Ø HOLE (MIN.) HOLE ON CENTER (GROUNDING LUG – ONE REQ'D ON THE LID), HTM SHOP TO DRILL ONE 1/2"Ø IN THE TANK SUPPORT.
TUB TEST – TUB ONLY – WATERTIGHT		
FINISH – TUB – INSIDE AND OUT – SHOP PRIMER		
FINISH – TANK – INTERIOR – NONE		
FINISH – TANK – EXTERIOR – SAME AS TUB		
LABEL – UL 142 – APPLY LABEL ON TOP OF TANK		
TANK SUPPORT – 10 GA x 4" WIDE x 2" DEEP PRESSBRAKE "U" PATTERN		

(1) 2"ø x 96" LONG GALVANIZED PIPE (T.B.E.)
(1) 2"ø MUSHROOM VENT
(1) 6" EMERGENCY VENT

		Highland Tank	
UNLESS NOTED, TOLERANCES ARE +/- 1"			
1,500 GAL HAZ HOPPER			
CUSTOMER:			
PROJECT:			
QUOTE NO:		CHK'D BY:	
SCALE:	DATE:	DWG. BY:	DWG. NO:
1/2"=1'-0"			1500HH