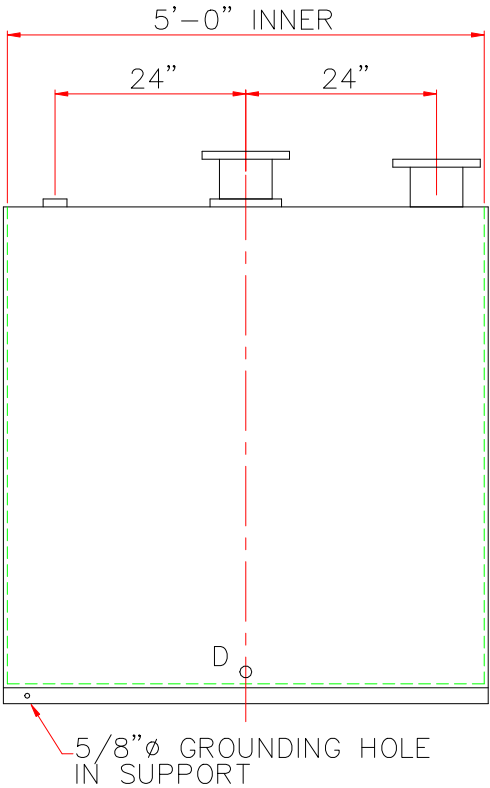
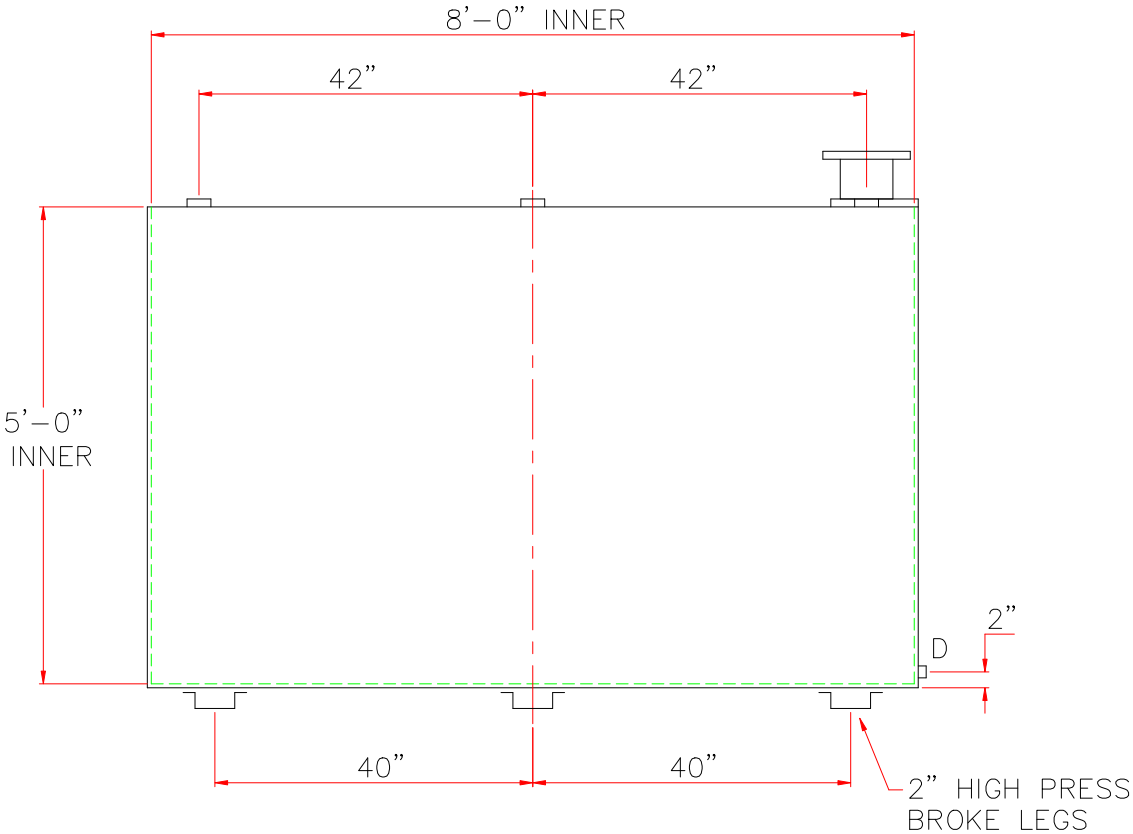
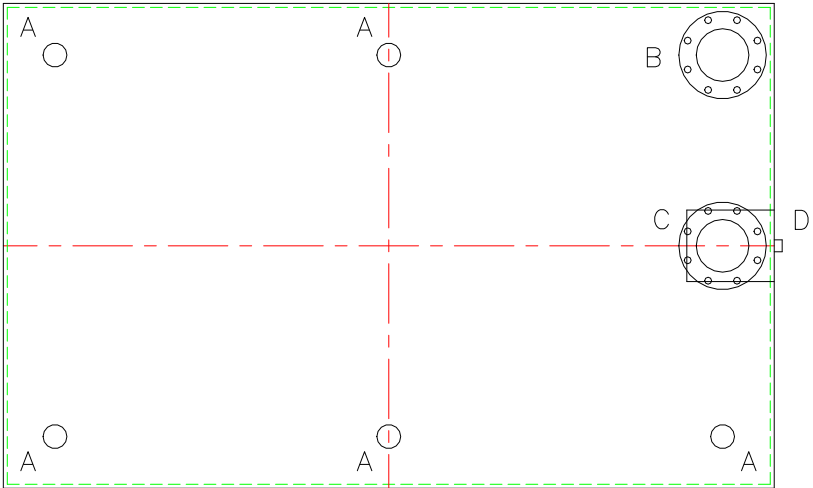


NOTE: ALL RIGHTS RESERVED. THIS DRAWING MUST NOT BE REPRODUCED IN ANY FORM WITHOUT THE WRITTEN PERMISSION OF HIGHLAND TANK®. HIGHLAND TANK® SHALL BE RESPONSIBLE ONLY FOR ITEMS INDICATED ON THIS FABRICATION DRAWING UNLESS OTHERWISE NOTED. CUSTOMER IS RESPONSIBLE FOR VERIFYING CORRECTNESS OF SIZE AND LOCATION OF FITTINGS, ACCESSORIES, AND COATINGS SHOWN ON THIS DRAWING.


TOUCH UP OF FINISHED PAINT IS REQUIRED BY INSTALLATION CONTRACTOR. TOUCH UP PAINT SHIPPED WITH TANK.

SHIP LOOSE: (INSTALLATION ON SITE BY OTHERS)
1/2” BUTTON SIGHT GLASS



DESIGN DATA
CAPACITY – 1500 GALLONS
TYPE – DOUBLE WALL – TYPE I
NO. REQ. – –
OPERATING PRESSURE – ATMOSPHERIC
SPECIFIC GRAVITY = 1.0
TANK MATERIAL – MILD CARBON STEEL
THICKNESS – INNER– 7 GAUGE
THICKNESS – OUTER– 7 GAUGE
CONSTRUCTION – INNER – LAP WELD OUTSIDE ONLY
OUTER – LAP WELD OUTSIDE ONLY
TANK TEST – INNER – 1.5 TO 3 PSIG
OUTER – 1.5 TO 3 PSIG
INT. FINISH – NONE
–
EXT. FINISH – SHOP PRIMER
–
LABEL – UL 142

FITTING LEGEND	
A	2” FITTING
B	6” FFSO 150# FLANGE – PRIMARY EMERGENCY VENT USE
C	6” FFSO 150# FLANGE IN INTERSTICE EXTENSION BOX MARK WITH SPECIAL WARNING LABEL INTERSTITIAL EMERGENCY VENT USE ONLY
D	1/2” FITTING THROUGH OUTER SHELL ONLY WITH BUTTON SITE GLASS
E	–
F	–

			
	Highland Tank		
UNLESS NOTED, TOLERANCES ARE +/- 1"			
1500 GAL DW LUBE TANK (S-STYLE)			
CUSTOMER:			
PROJECT:			
QUOTE NO:			CHK'D BY:
SCALE: 1/2" = 12"	DATE:	DWG. BY:	DWG. NO.: 01500LDWS