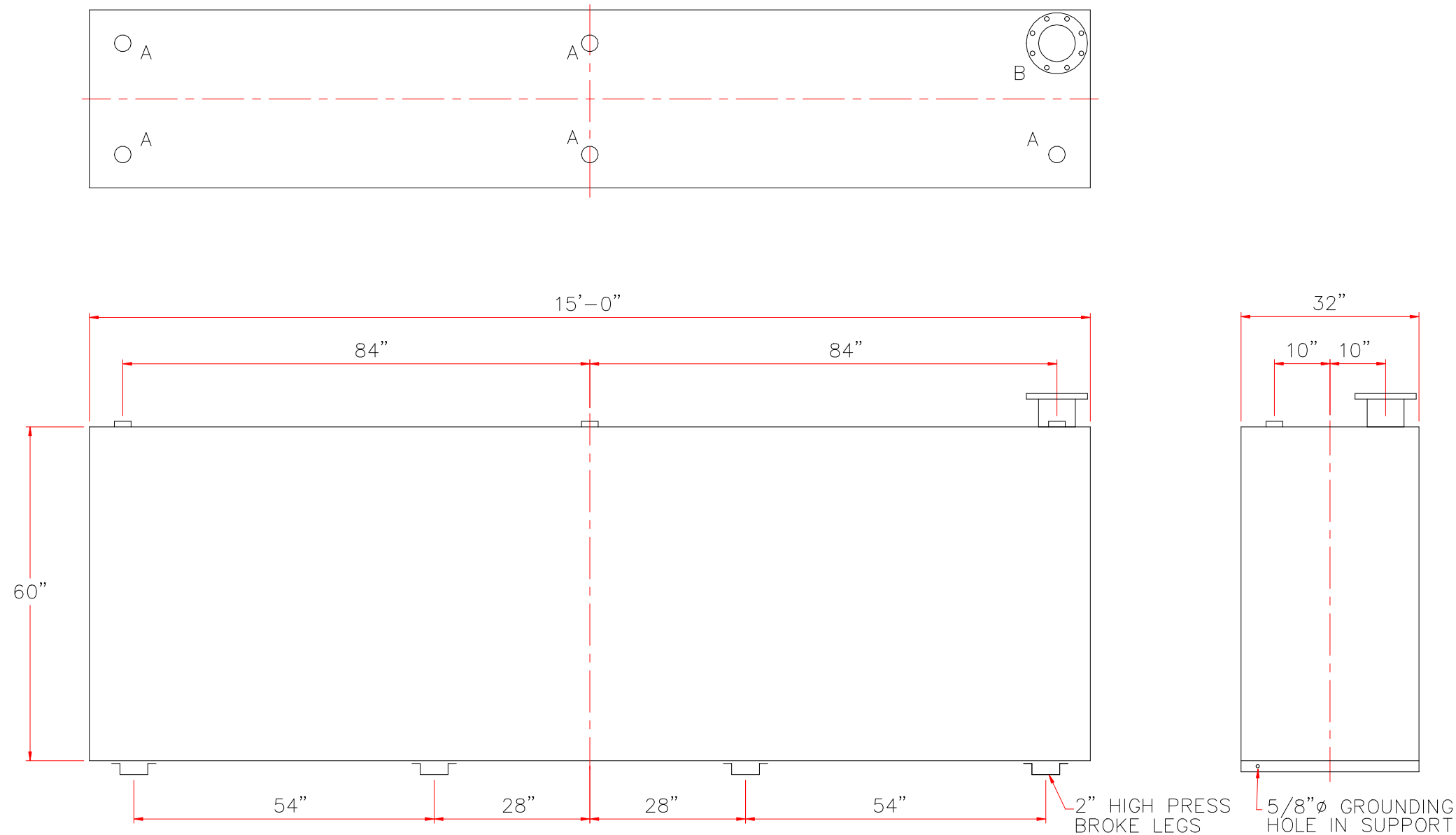


TOUCH UP OF FINISHED PAINT IS  
REQUIRED BY INSTALLATION  
CONTRACTOR. TOUCH UP PAINT SHIPPED  
WITH TANK.



<u>DESIGN DATA</u>
CAPACITY –1500 GALLONS
TYPE – SINGLE WALL
NO. REQ. – –
OPERATING PRESSURE –ATMOSPHERIC
SPECIFIC GRAVITY = 1.0
TANK MATERIAL – MILD CARBON STEEL
THICKNESS – 7 GAUGE
CONSTRUCTION –LAP WELD OUTSIDE ONLY –
TANK TEST –2 PSIG –
INT. FINISH – NONE –
EXT. FINISH –SHOP PRIMER –
LABEL – UL 142

<u>LEGEND</u>	
A	2" FITTING
B	6" FFSO 150# FLANGE – EMERGENCY VENT USE
C	–
D	–
E	–
F	–

					
		<h1>Highland Tank</h1>			
UNLESS NOTED, TOLERANCES ARE $\pm 1"$					
1500 GAL SW LUBE TANK					
CUSTOMER:					
PROJECT:					
QUOTE NO:				CHK'D BY:	
SCALE: $1/2" = 12"$	DATE:	DWG. BY:		DWG. NO:	
				01500LSW	