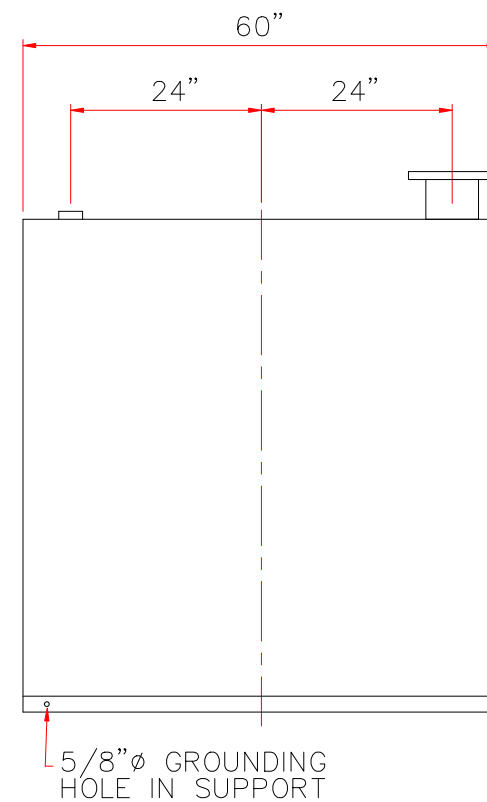
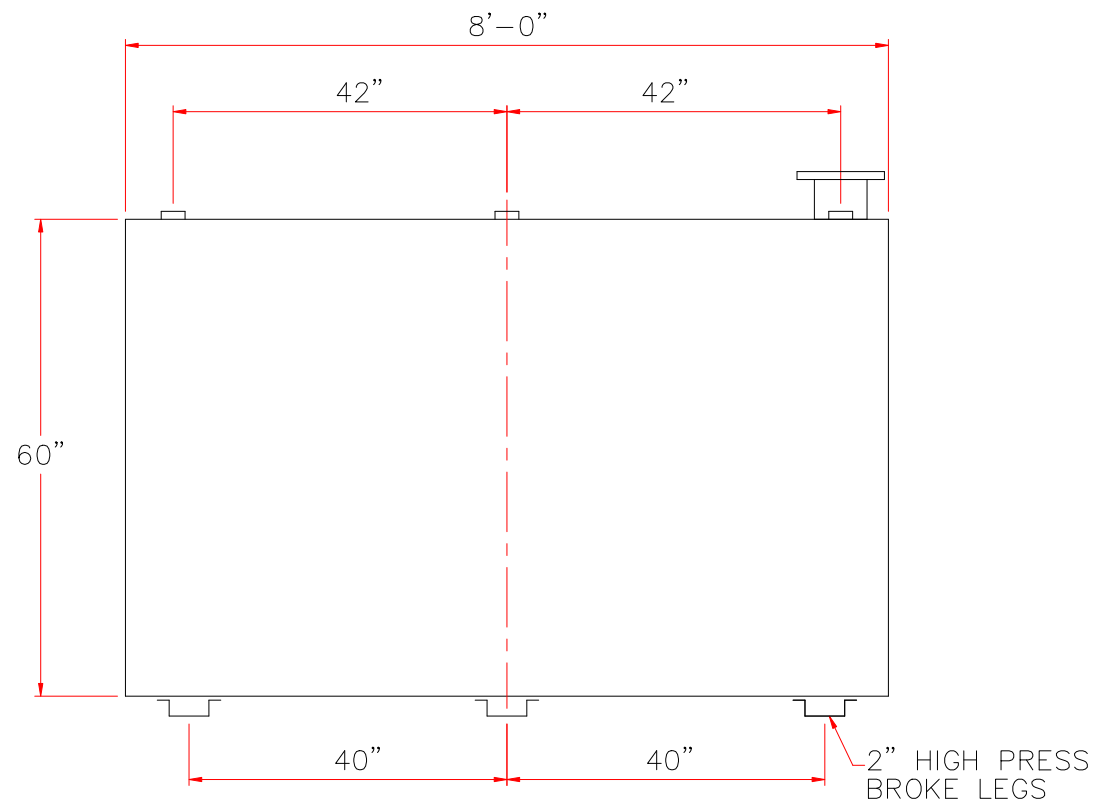
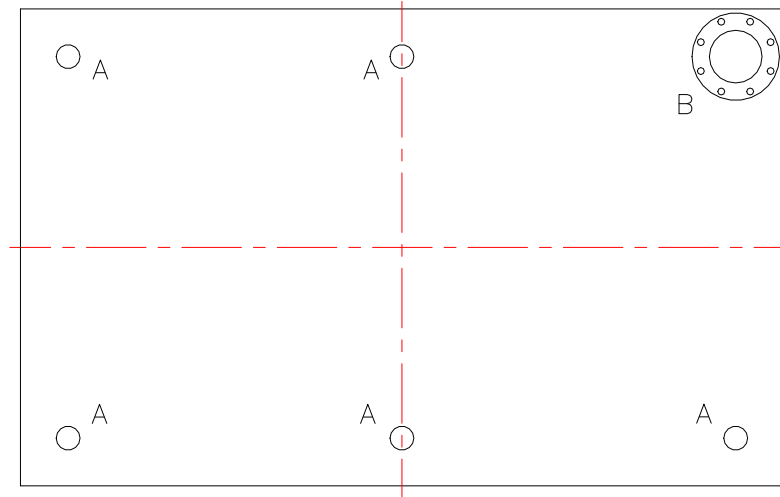


TOUCH UP OF FINISHED PAINT IS
REQUIRED BY INSTALLATION
CONTRACTOR. TOUCH UP PAINT SHIPPED
WITH TANK.



DESIGN DATA
CAPACITY –1500 GALLONS
TYPE – SINGLE WALL
NO. REQ. – –
OPERATING PRESSURE –ATMOSPHERIC
SPECIFIC GRAVITY = 1.0
TANK MATERIAL – MILD CARBON STEEL
THICKNESS – 7 GAUGE
CONSTRUCTION –LAP WELD OUTSIDE ONLY –
TANK TEST –2 PSIG –
INT. FINISH – NONE –
EXT. FINISH –SHOP PRIMER –
LABEL – UL 142

<u>LEGEND</u>	
A	2" FITTING
B	6" FFSO 150# FLANGE – PRIMARY EMERGENCY VENT USE
C	–
D	–
E	–
F	–

		<h1>Highland Tank</h1>	
<p>UNLESS NOTED, TOLERANCES ARE $\pm 1"$</p>			
<p>1500 GAL SW LUBE TANK (S-STYLE)</p>			
<p>CUSTOMER:</p>			
<p>PROJECT:</p>			
<p>QUOTE NO:</p>		<p>CHK'D BY:</p>	
<p>SCALE: $1/2" = 12"$</p>	<p>DATE:</p>	<p>DWG. BY:</p>	<p>DWG. NO: 01500LSWS</p>