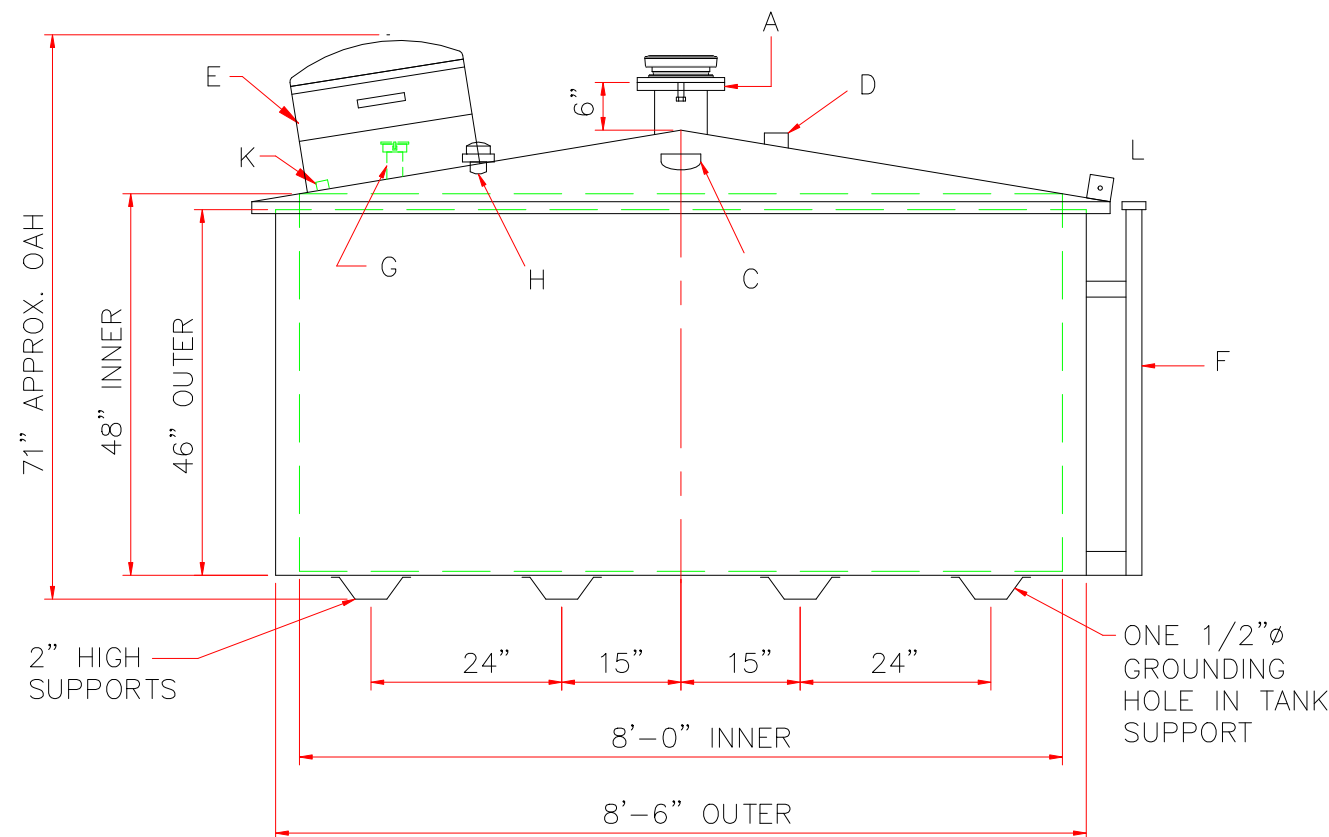
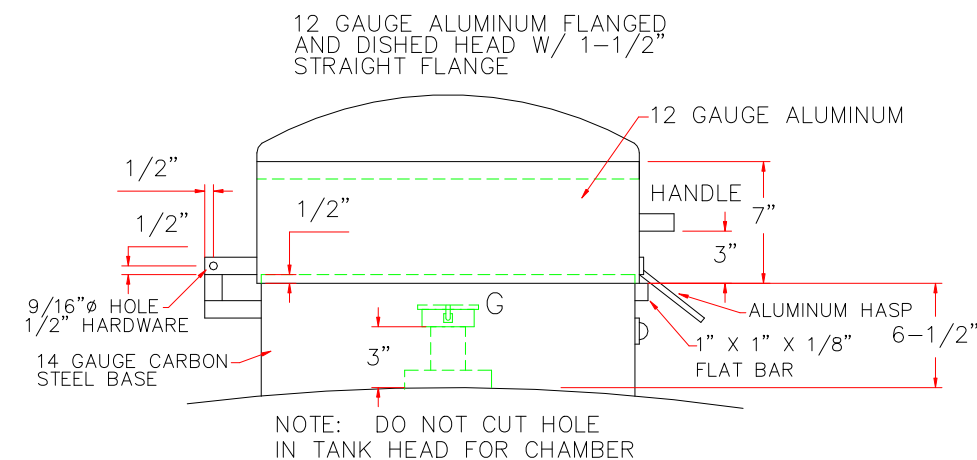
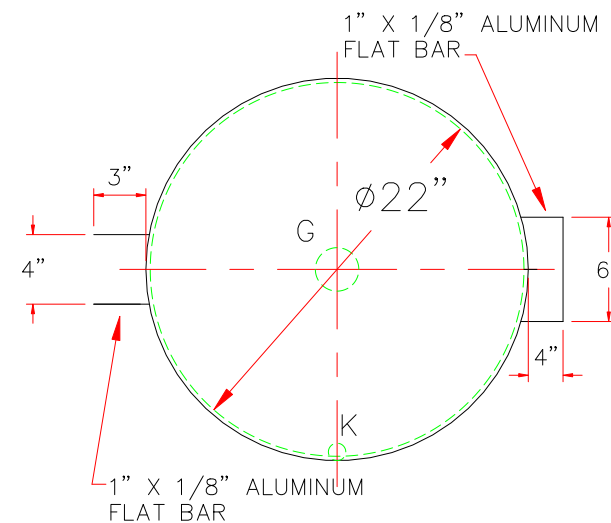


TOUCH UP OF FINISHED PAINT IS  
REQUIRED BY INSTALLATION  
CONTRACTOR. TOUCH UP PAINT SHIPPED  
WITH TANK.



SHIP LOOSE: (INSTALLATION BY OTHERS)

- (1) GAUGE
- (1) 2"Ø x 96" LONG GALVANIZED PIPE (T.B.E.)
- (1) 2"Ø MUSHROOM VENT
- (1) 6" EMERGENCY VENT



DETAIL E

	<b>Highland Tank</b>		
UNLESS NOTED, TOLERANCES ARE +/- 1"			
1,500 GAL PETRO HOPPER			
CUSTOMER:			
PROJECT:			
QUOTE NO:		CHK'D BY:	
SCALE: 1/2"=1'-0"	DATE:	DWG. BY:	DWG. NO: 1500PH