

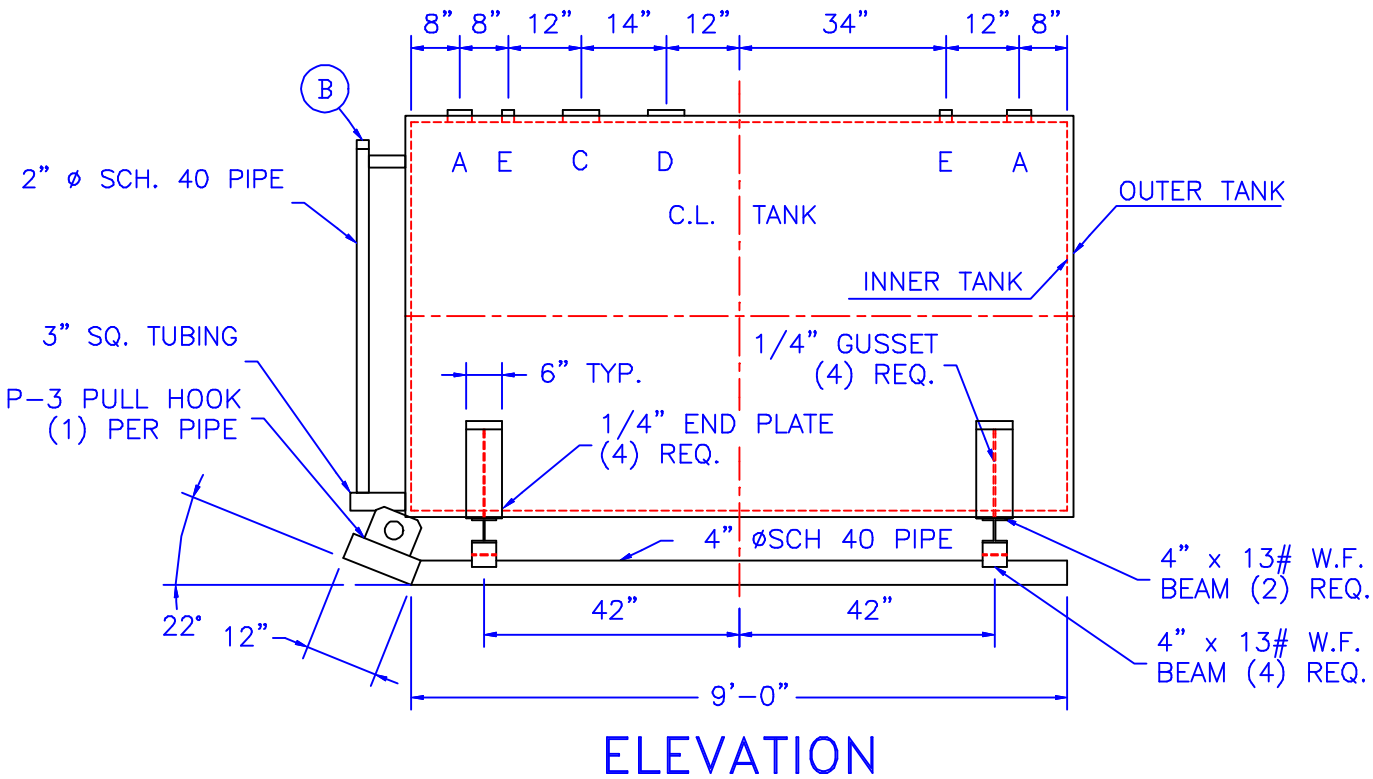
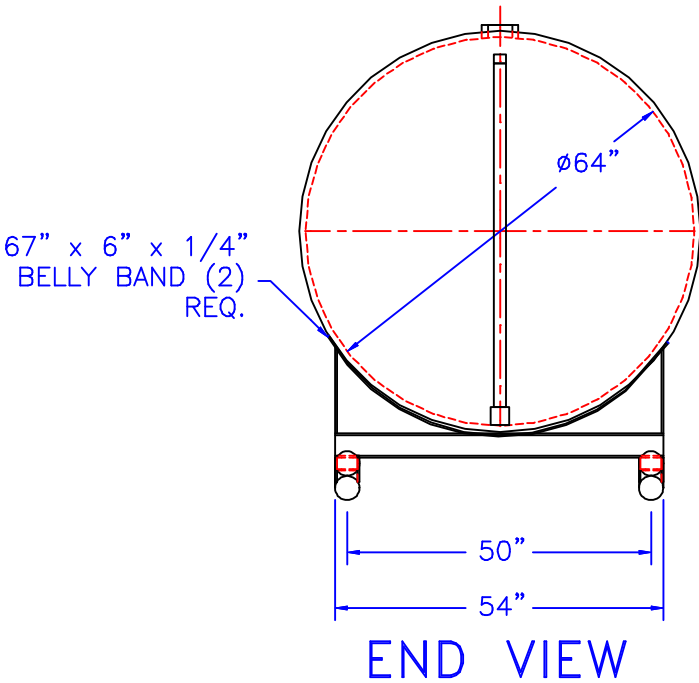
NOTE :
ALL RIGHTS RESERVED. THIS DRAWING OR ANY PART THEREOF MUST NOT BE REPRODUCED IN ANY FORM WITHOUT THE WRITTEN PERMISSION OF HIGHLAND TANK.
HIGHLAND TANK SHALL BE RESPONSIBLE ONLY FOR ITEMS INDICATED ON THIS FABRICATION DRAWING UNLESS OTHERWISE NOTED. CUSTOMER IS RESPONSIBLE FOR VERIFYING CORRECTNESS OF SIZE / LOCATION OF FITTINGS , ACCESSORIES & COATINGS SHOWN ON THIS DRAWING

FITTING SCHEDULE

- A= 4" Ø NPT
- B= 2" Ø NPT (FTG. FOR LEAK DETECTION)
- C= 6" Ø NPT (PRIMARY EMERGENCY VENT)
- D= 6" Ø NPT (SECONDARY EMERGENCY VENT)
- E= 2" Ø NPT

GENERAL NOTES

CAPACITY : 1,500 GALLONS
TYPE : I 360° DOUBLE WALL, ABOVEGROUND, HEAVY DUTY SKID
NO. REQ. : (1)
MATERIAL : MILD CARBON STEEL
TEST : 5 P.S.I.
ESTIMATED WEIGHT: 3,560 lbs.
MIN. GAUGE OR THICKNESS (PER U.L. 142):
INNER HEADS : 7 GA. OUTER HEADS : 10 GA.
INNER SHELL : 7 GA. OUTER SHELL : 10 GA.
PAINT :
 INTERIOR : NONE
 EXTERIOR : RED PRIMER
CONSTRUCTION : FLAT FLANGED HEADS, LAP WELD ALL EXTERIOR SEAMS ONLY
APPROVED LABELS : U.L. 142
OPERATING PRESSURE ATMOSPHERIC:



REVISIONS				
<div><div><div><div><div></div><div>HIGHLAND TANK & MFG. CO.</div></div></div><div><div><div></div><div>Highland Tank</div></div></div></div></div>				
1,500 GALLON ABOVEGROUND HORIZONTAL D. W. TYPE I 360° HEAVY-DUTY SKID				
CUSTOMER:				
PROJECT:				
QUOTE NO:				CHK'D BY:
SCALE: 3/8"=1'-0"	DATE:	DWG. BY:	DWG. NO.: 01500SKHDDW64	