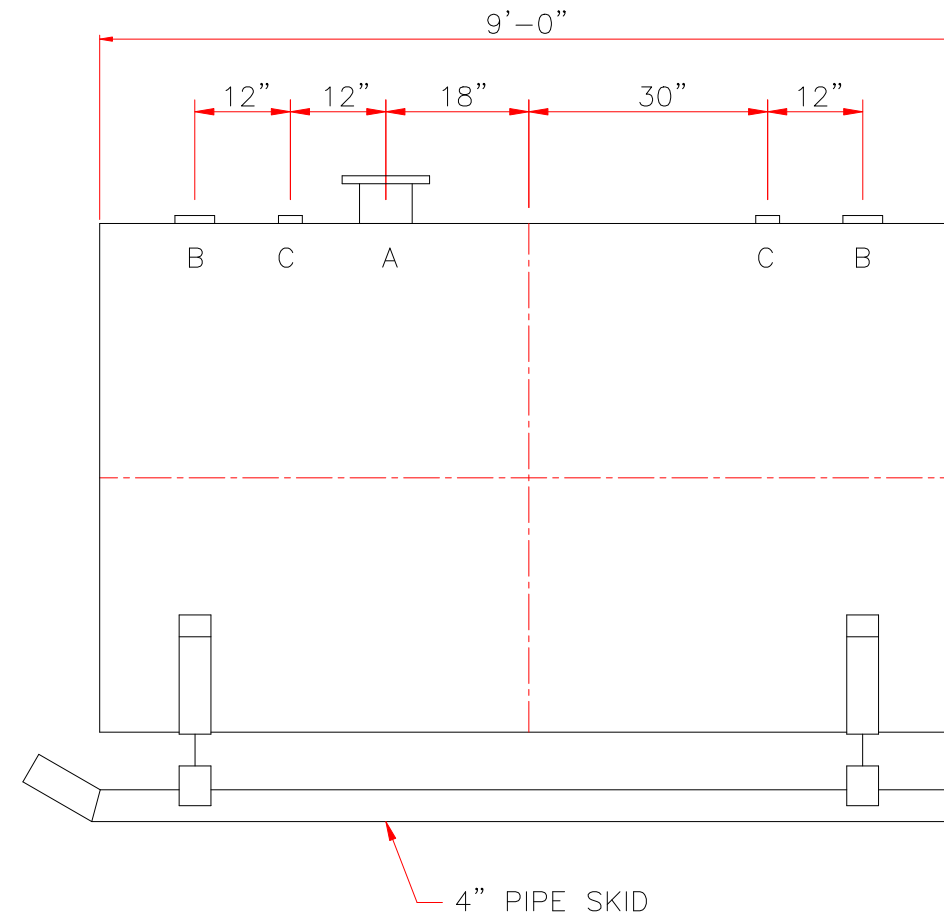
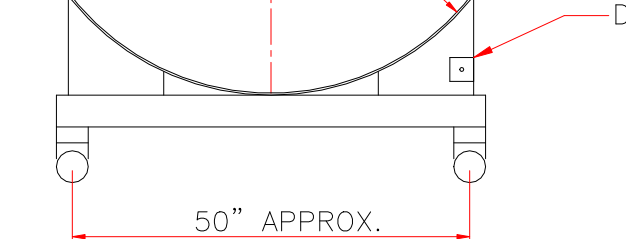


TOUCH UP OF FINISHED PAINT IS
REQUIRED BY INSTALLATION
CONTRACTOR. TOUCH UP PAINT SHIPPED
WITH TANK.



<u>DESIGN DATA</u>	
CAPACITY	— 1,500 GALLONS
TYPE	— SINGLE WALL
NO. REQ.	— —
OPERATING PRESSURE	— ATMOSPHERIC
SPECIFIC GRAVITY	= 1.0
TANK MATERIAL	— MILD CARBON STEEL
THICKNESS — HEADS:	7 GAUGE
THICKNESS — SHELL:	7 GAUGE
CONSTRUCTION	— LAP WELD OUTSIDE ONLY
TANK TEST	— 5 PSIG —
INT. FINISH	— NONE —
EXT. FINISH	— SHOP PRIMER
LABEL	— UL 142

<u>LEGEND</u>	
A	6" FFSO 150# FLANGE – PRIMARY EMERGENCY VENT USE
B	4" FITTING
C	2" FITTING
D	3" X 3" PLATE WITH 1/2"Ø HOLE ON CENTER GROUNDING LUG
E	–
F	–

		<h1>Highland Tank</h1>	
<p>UNLESS NOTED, TOLERANCES ARE $\pm 1"$</p>			
<p>1500 GAL 64"Ø SW SKID TANK</p>			
<p>CUSTOMER:</p>			
<p>PROJECT:</p>			
<p>QUOTE NO:</p>		<p>CHK'D BY:</p>	
<p>SCALE: 1/2" = 12"</p>	<p>DATE:</p>	<p>DWG. BY:</p>	<p>DWG. NO: 01500SKSW64</p>