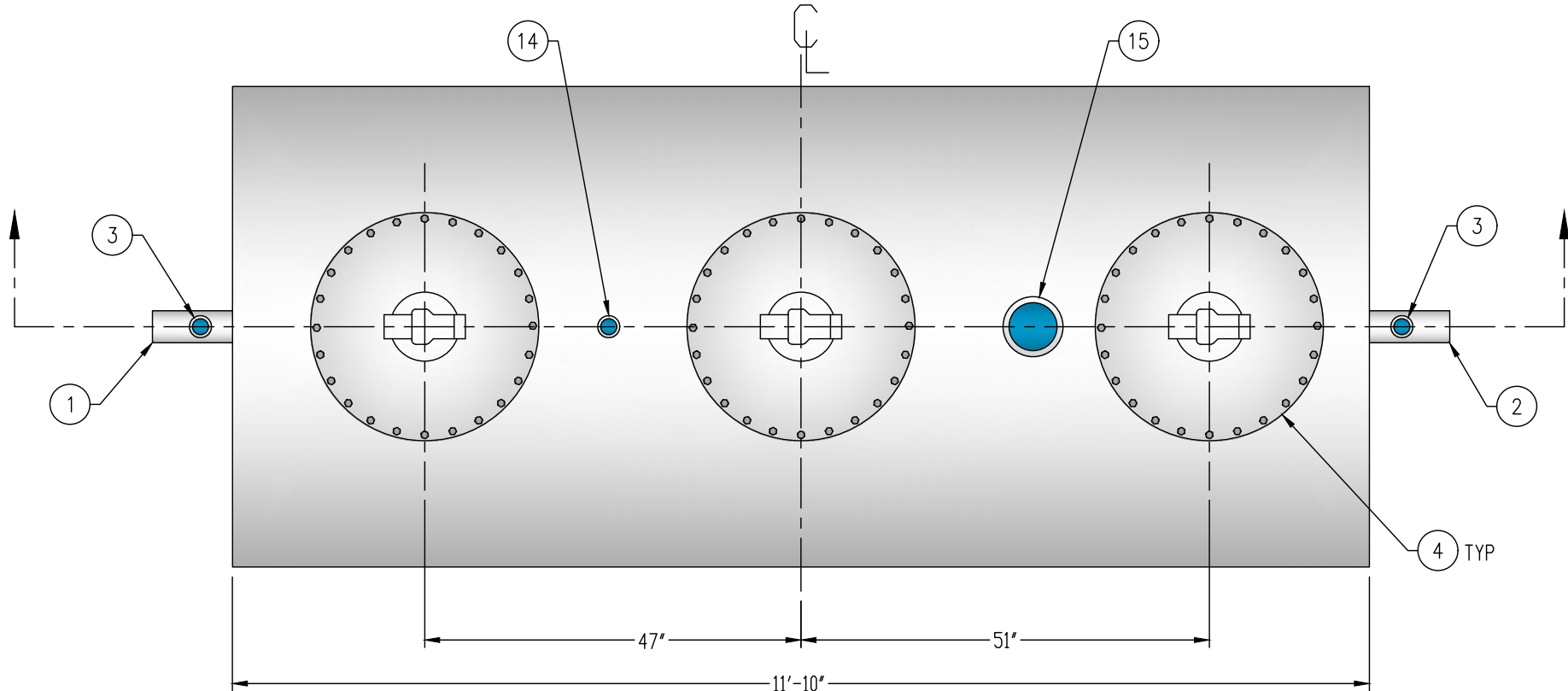


CUSTOMER APPROVAL

THE CUSTOMER HAS REVIEWED THIS  
DRAWING AND VERIFIED THE ACCURACY OF  
ALL INFORMATION AND DIMENSIONS.

SIGNED: \_\_\_\_\_

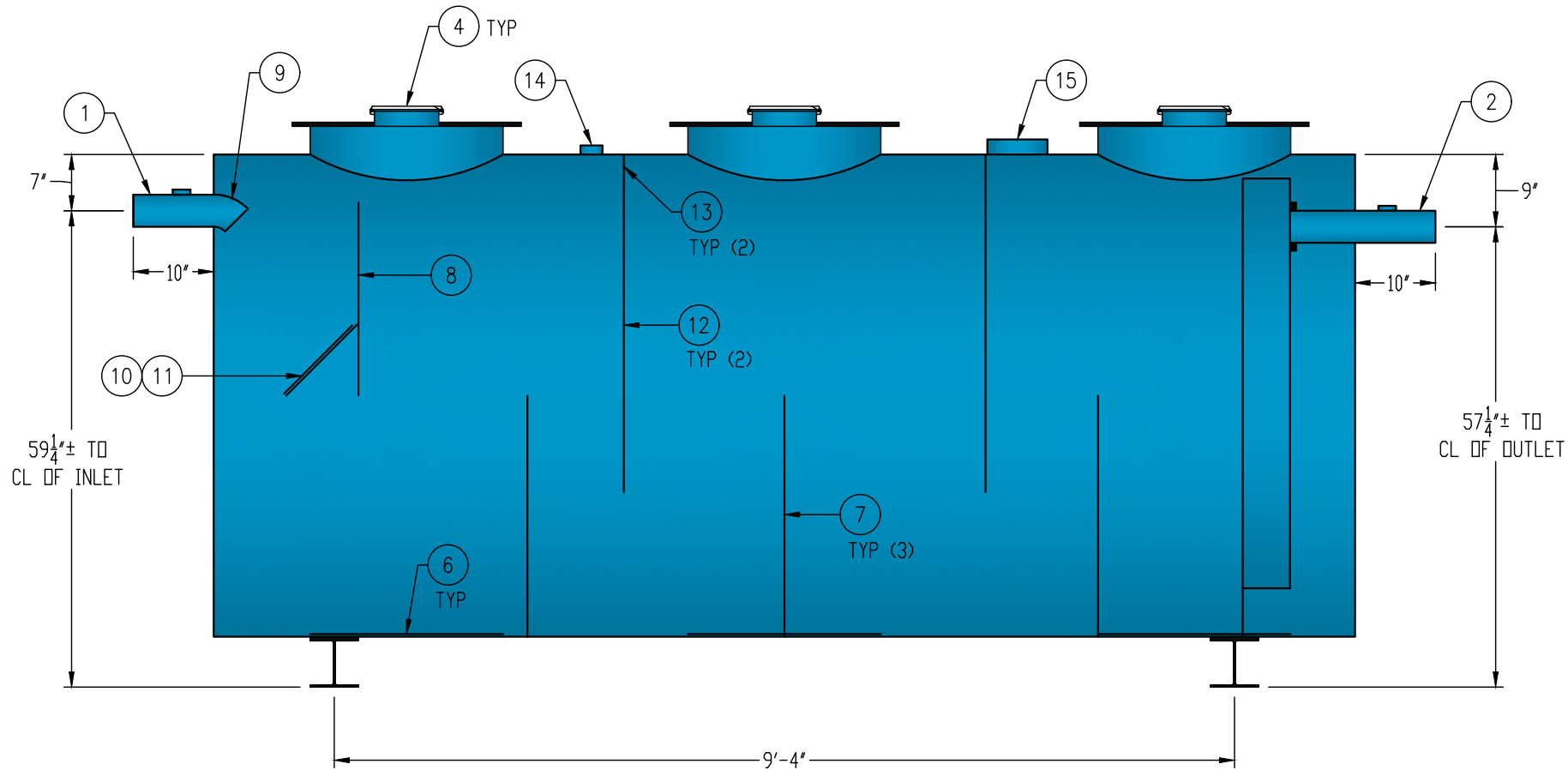
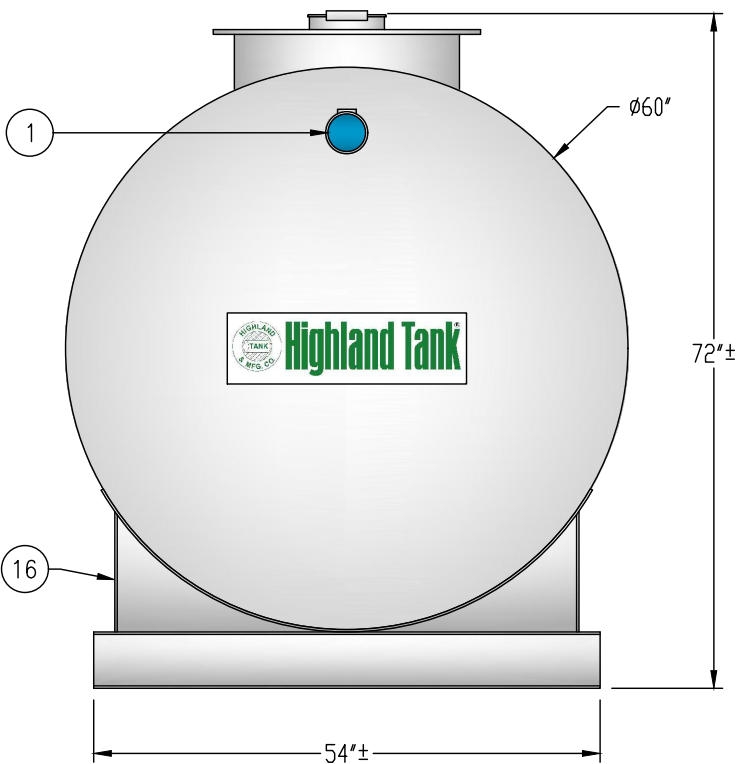
DATE: \_\_\_\_\_



GENERAL SPECIFICATIONS

QUANTITY: ONE (1)  
MODEL: PGI-1500-3 AC  
OPERATING CAPACITY: 1,520 GALLONS  
TYPE: SINGLE WALL, ABOVEGROUND  
MATERIAL: 7 GA CARBON STEEL  
LAP FIT AND WELD INTERIOR AND EXTERIOR SEAMS  
TANK TEST: 3-5 PSI AIR TEST  
SURFACE PREP: SSPC-SP 10 BLAST INTERIOR SURFACES  
SSPC-SP 6 BLAST EXTERIOR SURFACES  
EXT. COATING: WHITE URETHANE - 3-5 MILS  
INT. COATING: CHEMTHANE 4200 PW (15 MILS DFT)  
OPERATING PRESSURE: ATMOSPHERIC

- PROVIDED EQUIPMENT
1. 4"Ø SCH 40 PIPE STUB - INLET
  2. 4"Ø SCH 40 PIPE STUB - OUTLET
  3. 2" HC - VENT
  4. 24"Ø MANWAY WITH 8" EASY-ACCESS HATCH
  5. 6" SQUARE STEEL OUTLET BAFFLE WITH OPEN TOP
  6. STRIKER PLATE
  7. SLUDGE BAFFLE - 7 GA
  8. UNDERFLOW BAFFLE - 7 GA
  9. 4"Ø 45° DIFFUSION ELBOW
  10. DIFFUSION PLATE - 7 GA
  11. 12" x 12" WEAR PLATE - 1/4"
  12. GREASE DAM - 7 GA
  13. 2" HOLE IN GREASE DAM FOR AIR CIRCULATION
  14. 2" HC - NORMAL TANK VENT
  15. 6" HC - EMERGENCY VENT
  16. 6" HIGH STEEL SADDLE - SEAL-WELD TO TANK



NOTE:  
ALL RIGHTS RESERVED. THIS DRAWING, OR ANY PART THEREOF, MUST NOT  
BE REPRODUCED IN ANY FORM WITHOUT WRITTEN PERMISSION FROM  
HIGHLAND TANK. UNLESS OTHERWISE NOTED, HIGHLAND TANK SHALL BE  
RESPONSIBLE ONLY FOR ITEMS INDICATED ON THIS FABRICATION DRAWING.  
THE CUSTOMER IS RESPONSIBLE FOR VERIFYING THE CORRECTNESS OF  
THE TYPE, SIZE, AND LOCATION OF ALL FITTINGS, ACCESSORIES, AND  
COATINGS SHOWN ON THIS DRAWING.



PASSIVE GREASE INTERCEPTOR  
1,500 GALLON TRIPLE-BASIN

CUSTOMER: \_\_\_\_\_

PROJECT: \_\_\_\_\_

QUOTE NO.: \_\_\_\_\_

SCALE: \_\_\_\_\_ DATE: 4/1/19 DWG. BY: MGS DWG. NO.: \_\_\_\_\_

ORDER: \_\_\_\_\_

DIMENSION TOLERANCE: ± 1"

NTS 4/1/19 MGS PGI-1500-3 AC