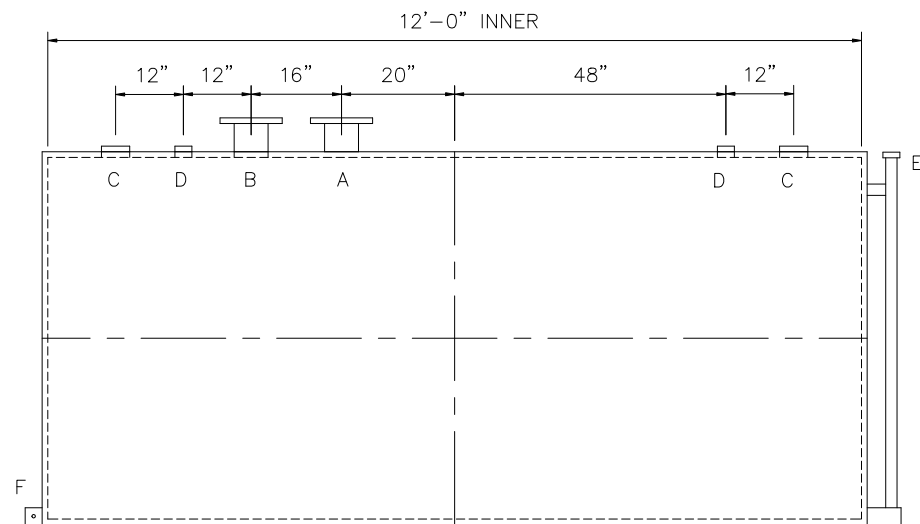
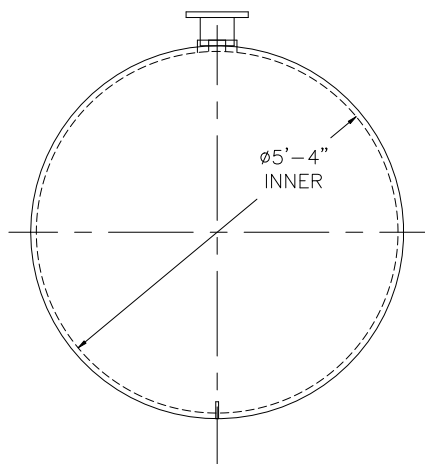


TOUCH UP OF FINISHED PAINT IS
REQUIRED BY INSTALLATION
CONTRACTOR. TOUCH UP PAINT SHIPPED
WITH TANK.



DESIGN DATA
CAPACITY – 2,000 GALLONS
TYPE – DOUBLE WALL – TYPE I
NO. REQ. – –
OPERATING PRESSURE – ATMOSPHERIC
SPECIFIC GRAVITY = 1.0
TANK MATERIAL – MILD CARBON STEEL
THICKNESS – INNER– HEADS: 7 GA SHELL: 7 GA
THICKNESS – OUTER– HEADS: 10 GA SHELL:10 GA
CONSTRUCTION – INNER – LAP WELD OUTSIDE ONLY OUTER – LAP WELD OUTSIDE ONLY
TANK TEST – INNER – 5 PSIG OUTER – 2 PSIG AND FULL VACUUM
INT. FINISH – NONE –
EXT. FINISH – SHOP PRIMER –
LABEL – UL 142

<u>LEGEND</u>	
A	6" FF50 150# FLANGE THROUGH OUTER SHELL ONLY, MARK WITH SPECIAL WARNING LABEL INTERSTITIAL EMERGENCY VENT USE ONLY
B	6" FF50 150# FLANGE – PRIMARY EMERGENCY VENT USE ONLY
C	4" FITTING
D	2" FITTING
E	2" INTERSTITIAL MONITOR PIPE
F	3" x 3" PLATE w/ 1/2"Ø (MIN.) HOLE ON CENTER (GROUNDING LUG—ONE REQ'D)

