

SHIPPING LUGS AS NEEDED

Technical drawing of a circular structure, likely a dome or a large container, with a central vertical element. The drawing includes the following dimensions and labels:

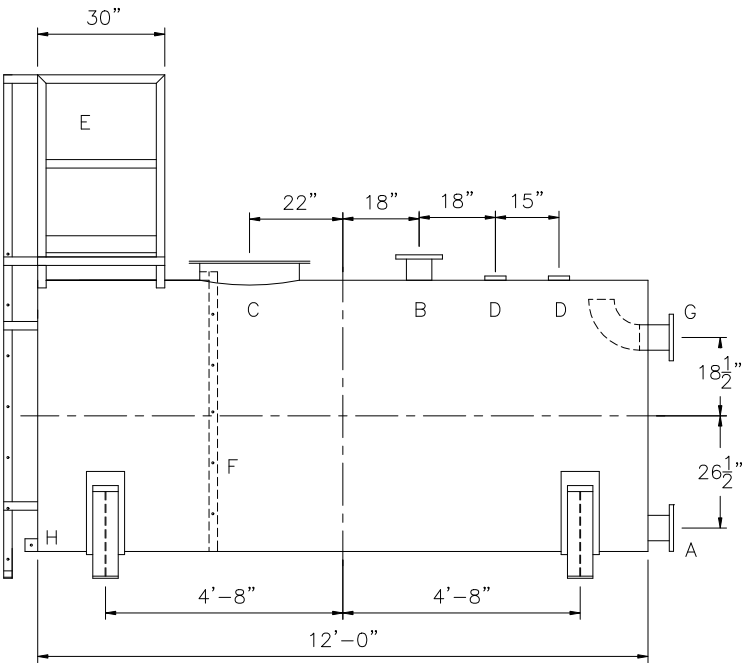
- A vertical dimension of 42" is shown on the right side, indicating the height of the central vertical element.
- A horizontal dimension of 61 1/2" is shown on the right side, indicating the radius or half-width of the structure.
- A circular dimension of $\phi 64"$ is shown on the left side, indicating the diameter of the circular structure.
- The letter "E" is labeled on the central vertical element.

1-1/8"Ø HOLES (4 REQ'D)

14" 14" 2" 2"

8"

58"



 <h1>Highland Tank</h1>	
UNLESS NOTED, TOLERANCES ARE +/- 1"	
<h2>HighDRO® WATER STORAGE TANK</h2> <p>2,000 GAL. 64"Ø SINGLE-WALL ABOVEGROUND HORIZONTAL FOR POTABLE WATER WITH BOTTOM DRAIN</p>	
CUSTOMER:	
PROJECT:	
QUOTE NO:	CHK'D BY:
SCALE: 3/8" = 1" DATE: XX/XX/XX DWG. BY: XXX	DWG. NO.: 02000AHSWHPDPTBD64