

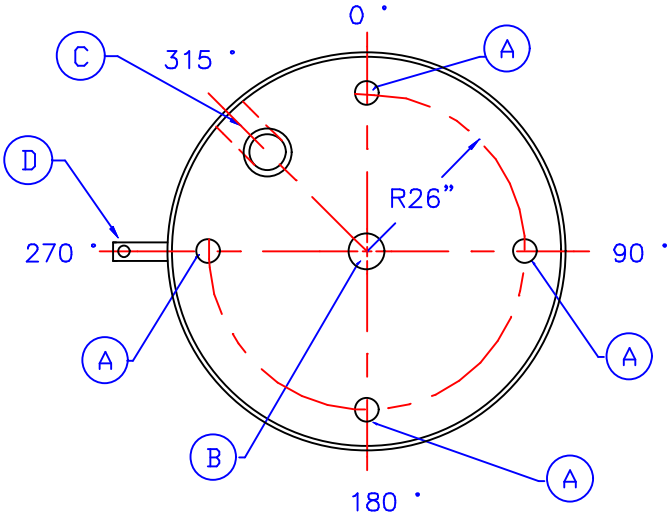
NOTE :
ALL RIGHTS RESERVED. THIS DRAWING OR ANY PART THEREOF MUST NOT BE REPRODUCED IN ANY FORM WITHOUT THE WRITTEN PERMISSION OF HIGHLAND TANK.
HIGHLAND TANK SHALL BE RESPONSIBLE ONLY FOR ITEMS INDICATED ON THIS FABRICATION DRAWING UNLESS OTHERWISE NOTED. CUSTOMER IS RESPONSIBLE FOR VERIFYING CORRECTNESS OF SIZE / LOCATION OF FITTINGS , ACCESSORIES & COATINGS SHOWN ON THIS DRAWING

NOTE :
SEE PLAN VIEW FOR TRUE ORIENTATION & LOCATION OF OPENINGS AND ACCESSORIES

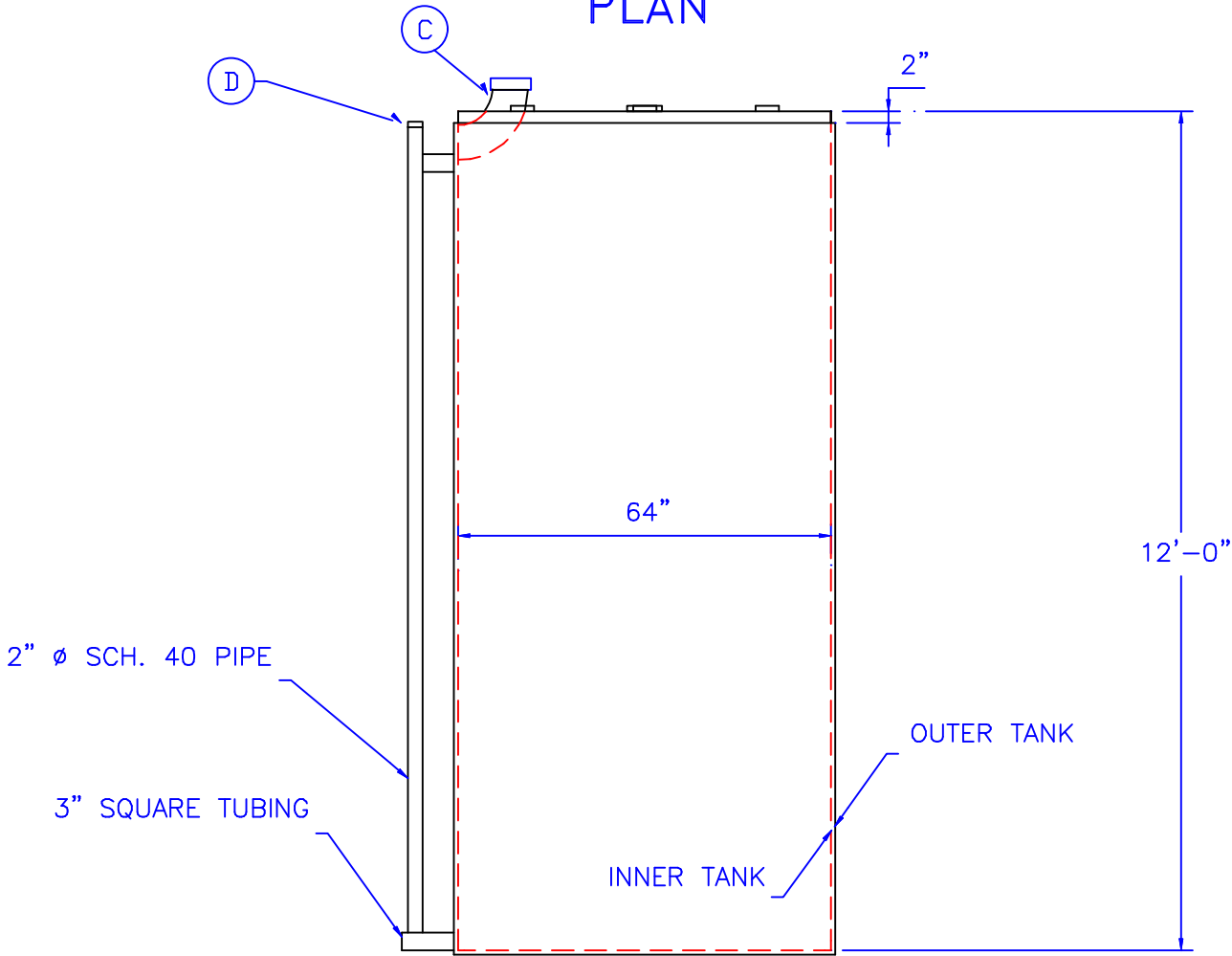
NOTE :
LIFTING LUGS FOR UNLOADING UNIT & STANDING UNIT UPRIGHT TO BE PLACED AS NEEDED BY FABRICATION SHOP

FITTING SCHEDULE

- A= 4 ∅ NPT
- B= 6 ∅ NPT FOR PRIMARY EMERGENCY VENT
- C= 6 ∅ CPLG. & ELBOW FOR SECONDARY EMERGENCY VENT (HIGHLAND TANK STANDARD DESIGN)
- D= 2"∅ NPT FOR LEAK DETECTION



PLAN



ELEVATION

GENERAL NOTES

CAPACITY : 2000 GALLONS
TYPE : I 360 DOUBLE WALL ABOVEGROUND VERTICAL
NO. REQ. :
MATERIAL : MILD CARBON STEEL
TEST : 1.5 TO 2.5 P.S.I.
MIN. GAUGE OR THICKNESS (PER U.L. 142):
INNER SHELL— 7GA. OUTER SHELL— 7GA.
INNER BOTTOM HEAD— 1/4" OUTER BOTTOM HEAD— 1/4"
SINGLE TOP HEAD— 10GA.

PAINT :
INTERIOR : NONE
EXTERIOR : RED PRIMER
CONSTRUCTION : FLAT BOTTOM HEADS, FLAT TOP HEAD.
LAP WELD ALL EXTERIOR SEAMS EXCEPT
BUTT WELD ALL LONGITUDINAL SEAMS
APPROVED LABELS : U.L. 142

REVISIONS				
<div><div><div><div><div></div><div>HIGHLAND TANK</div><div>MFG. CO.</div></div></div><div><div><div></div><div>Highland Tank</div></div></div></div></div>				
2000 GALLON ABOVEGROUND VERTICAL DOUBLE WALL TYPE I 360				
CUSTOMER:				
PROJECT:				
QUOTE NO:				
SCALE:	DATE:	DWG. BY:	CHK'D BY:	DWG. NO.:
3/8 " = 1'-0"	9-28-99			2KAVDWI64