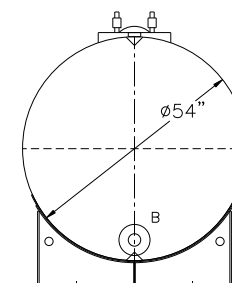
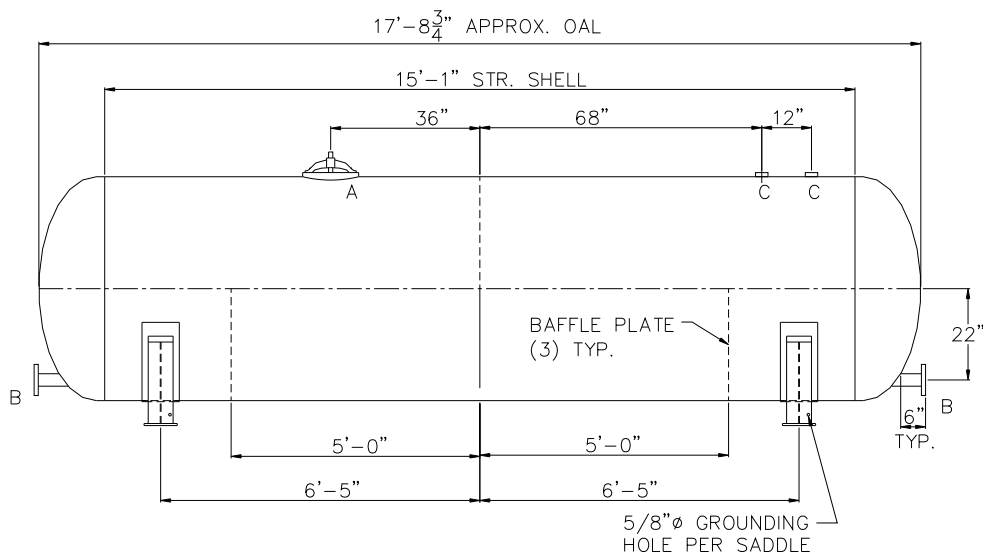
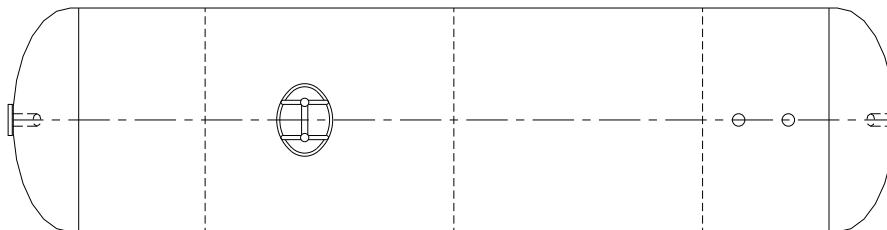


NOTE: ALL RIGHTS RESERVED. THIS
DRAWING MUST NOT BE REPRODUCED IN
ANY FORM WITHOUT THE WRITTEN
PERMISSION OF HIGHLAND TANK.
HIGHLAND TANK SHALL BE RESPONSIBLE
ONLY FOR ITEMS INDICATED ON THIS
FABRICATION DRAWING UNLESS OTHERWISE
NOTED. CUSTOMER IS RESPONSIBLE FOR
VERIFYING CORRECTNESS OF SIZE AND
LOCATION OF FITTINGS, ACCESSORIES, AND
COATINGS SHOWN ON THIS DRAWING.

TOUCH UP OF FINISHED PAINT IS
REQUIRED BY INSTALLATION
CONTRACTOR. TOUCH UP PAINT SHIPPED
WITH TANK.



DESIGN DATA

CAPACITY - 2,000 GALLONS
TYPE - ABOVEGROUND CHLORINE CONTACT VESSEL
NO. REQ. - ___
MAX. ALLOW. WORKING PRES.- ___ PSIG @ 140 °F
MAX ALLOW. EXTERNAL W.P. - ___ PSIG @ 140 °F
MIN. DESIGN METAL TEMP - -20°F @ ___ PSIG
HYDROSTATIC TEST PRESSURE - ___ PSIG
CORROSION ALLOWANCE- ___
POSTWELD HEAT TREATED - ___
RADIOGRAPHY - ___
HEADS - ___ SA516 GR 70 ASME 2:1 ELLIPTICAL
SHELL - ___ SA516 GR 70
INT. FINISH - SSPC, SP10 BLAST
HIGHDRO™ LINER PLUS FOR NSF/ANSI 61 POTABLE WATER
EXT. FINISH - GRAY SHOP PRIMER
OR
OTHER TO BE SPECIFIED
CONSTRUCTION - BUTT WELD INSIDE AND OUTSIDE
ALL TANK FABRICATIONS TO BE IN ACCORDANCE
WITH ASME SECTION VIII, DIVISION 1, LATEST EDITION,
LATEST ADDENDA
ALL SHELL, HEAD, FITTINGS, AND MANWAYS TO BE
WELDED TO BIGBEE STEEL WELD PROCEDURE PER
DRAWING F11151
HIGHLAND TANK SERIAL # - -

LEGEND

MARK	SIZE	TYPE	RATING	NOZZLE	FLANGE	COMMENTS
A	12" x 16"	ELLIPT.	300#	SA106 GR C	---	w/ NEOPRENE RUBBER GASKET
B	---	RFSO	150#	SA106 GR B	SA105	---
C	---	HALF CPLG	3000#	SA105	---	---

