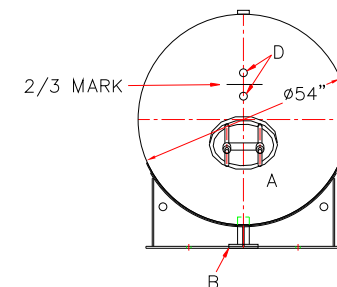
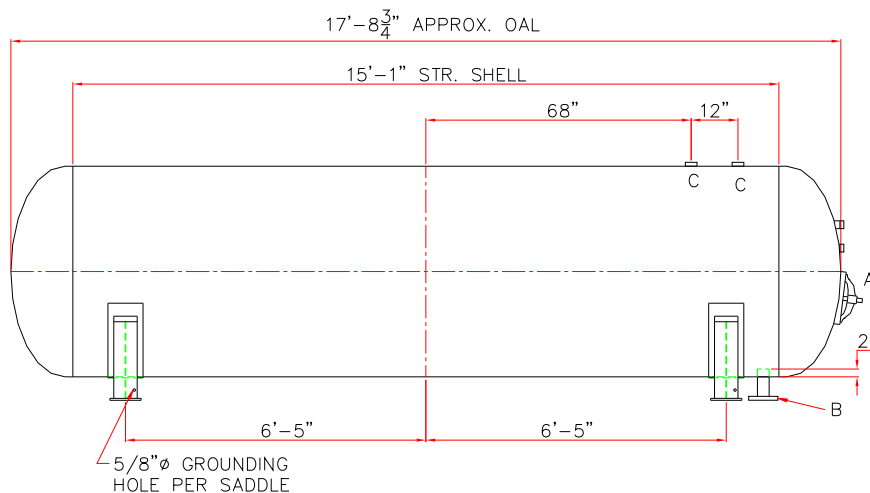
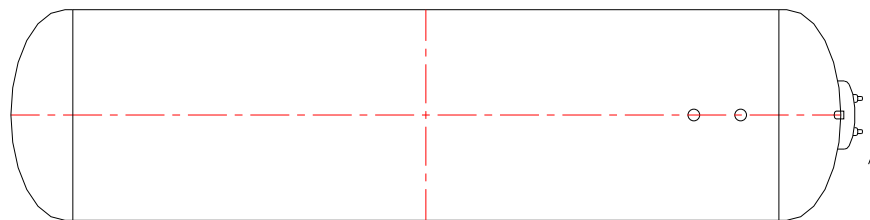


TOUCH UP OF FINISHED PAINT IS
REQUIRED BY INSTALLATION
CONTRACTOR. TOUCH UP PAINT SHIPPED
WITH TANK.



| |
|--|
| <u>DESIGN DATA</u> |
| CAPACITY - 2,000 GALLONS |
| TYPE - ABOVEGROUND FIRE PROTECTION VESSEL |
| NO. REQ. - ____ |
| MAX. ALLOW. WORKING PRES.- ____PSIG @ 140 °F |
| MAX ALLOW. EXTERNAL W.P. - ____PSIG @ 140 °F |
| MIN. DESIGN METAL TEMP - -20°F @ ____PSIG |
| HYDROSTATIC TEST PRESSURE - ____ PSIG |
| CORROSION ALLOWANCE- ____ |
| POSTWELD HEAT TREATED - ____ |
| RADIOGRAPHY - ____ |
| HEADS - ____ SA516 GR 70 ASME 2:1 ELLIPTICAL |
| SHELL - ____ SA516 GR 70 |
| INT. FINISH - SSPC, SP10 BLAST HIGH W'DRO LINER PLUS FOR NFPA 22 |
| EXT. FINISH - GRAY SHOP PRIMER OR OTHER TO BE SPECIFIED |
| CONSTRUCTION - BUTT WELD INSIDE AND OUTSIDE |
| ALL TANK FABRICATIONS TO BE IN ACCORDANCE WITH ASME SECTION VIII, DIVISION 1, LATEST EDITION, LATEST ADDENDA |
| ALL SHELL, HEAD, FITTINGS, AND MANWAYS TO BE WELDED TO BIGBEE STEEL WELD PROCEDURE PER DRAWING F11151 |
| HIGHLAND TANK SERIAL # - - |

| LEGEND | | | | | | |
|--------|-----------|-----------|--------|------------|--------|------------------------------------|
| MARK | SIZE | TYPE | RATING | NOZZLE | FLANGE | COMMENTS |
| A | 12" X 16" | ELLIPT. | 300# | SA106 GR C | --- | w/ NEOPRENE RUBBER GASKET |
| B | --- | RFSO | 150# | SA106 GR B | SA105 | WITH 2" PROJECTION INSIDE THE TANK |
| C | --- | HALF CPLG | 3000# | SA105 | --- | --- |
| D | --- | HALF CPLG | 3000# | SA105 | --- | --- |

