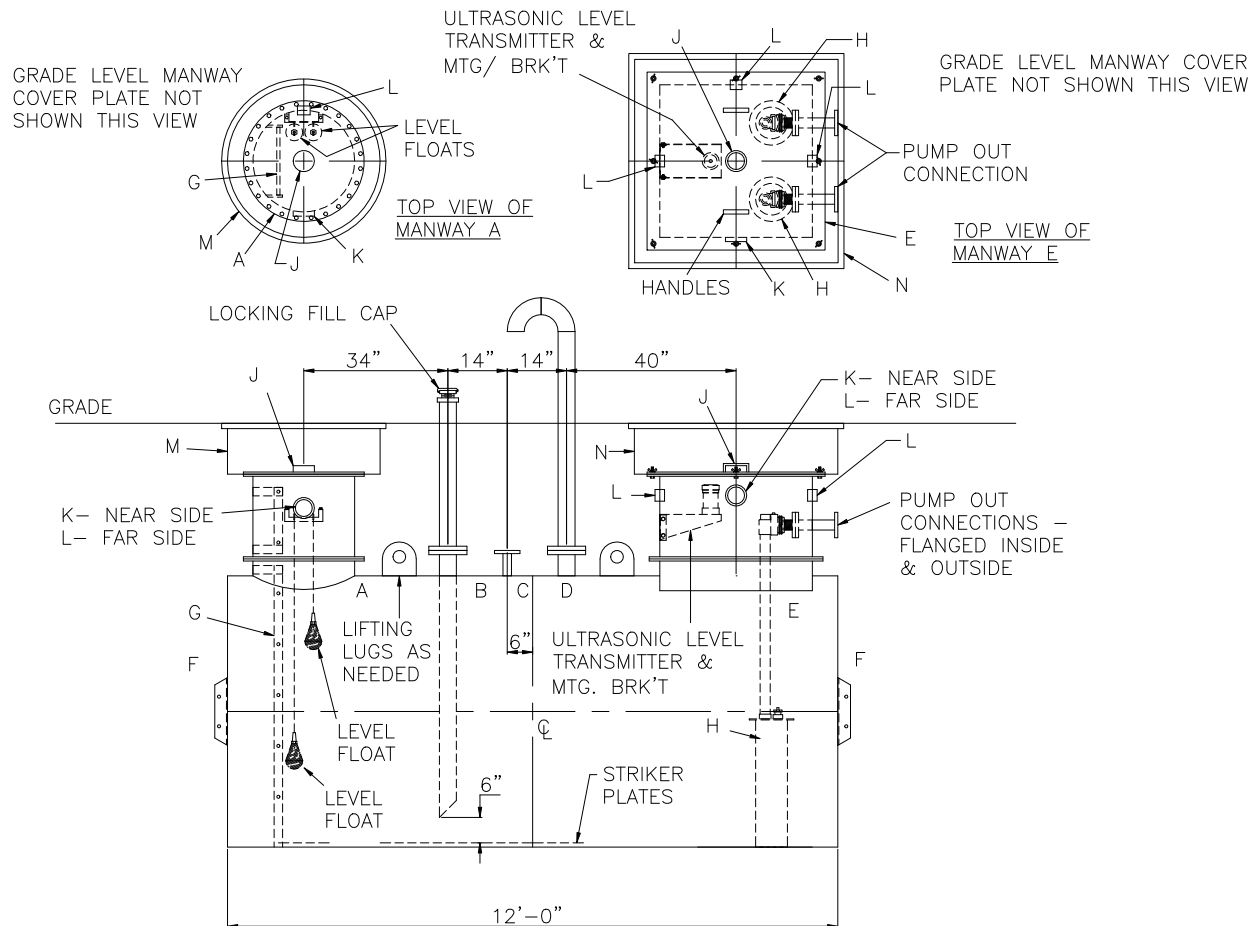
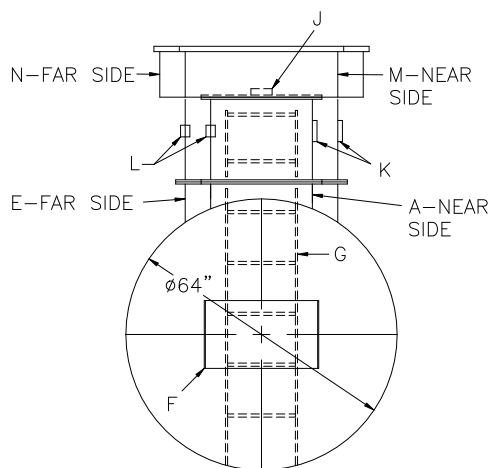


NOTES:

- 1) THE HIGHGUARD TANK IS NOT APPROVED FOR THE STORAGE OF HEATED PRODUCTS.
- 2) 15,000 VOLT SPARK TEST PROVIDED AT FACTORY.
- 3) SHOP TO INSTALL 1/4"x12"x12" STRIKER PLATES, ROLLED AND SEAL WELD TO THE TANK.

NOTES:


- 1) THE HIGHGUARD TANK IS NOT APPROVED FOR THE STORAGE OF HEATED PRODUCTS.
- 2) 15,000 VOLT SPARK TEST PROVIDED AT FACTORY.
- 3) SHOP TO INSTALL 1/4"x12"x12" STRIKER PLATES, ROLLED AND SEAL WELD TO THE TANK.



<u>DESIGN DATA</u>
CAPACITY – 2,000 GALLONS
TYPE – SINGLE WALL, HIGHGUARD UNDERGROUND
NO. REQ. – –
OPERATING PRESSURE – ATMOSPHERIC
TANK MATERIAL – MILD CARBON STEEL
THICKNESS – HEADS– 7 GA
THICKNESS – SHELL– 7 GA
*GA THK. BASED ON 60” MAX. BURIAL DEPTH
CONSTRUCTION – FLAT FLANGED HEADS, LAP WELD INSIDE & OUTSIDE
TANK TEST – 5 PSIG
INT. FINISH – SP10 BLAST HighDRO®-LINER PLUS FOR NSF 61 APPLICATIONS
EXT. FINISH – SP6 BLAST, 75 MILS POLYURETHANE
LABEL – UL-1746 PART IV, HIGHGUARD

NOTE: AT LEAST ONE 2" VENT PIPE MUST BE INSTALLED IN EACH MANWAY RISER

LEGEND			
A	24"Ø TIGHT BOLT MANWAY w/ 1/8" THK. EPDM GASKET & MANWAY EXTENSION	G	16" WIDE INTERNAL LADDER W/ 3/4" RUNGS ON 12" SPACING.
B	150# RF50 FLANGE WITH SCH 40 DROP TO WITHIN 6" OF TANK BOTTOM (FILL CONNECTION)	H	PUMPS
C	2" 150# RF50 FLANGE	J	4" FNPT FITTING (GAUGE)
D	150# RF50 FLANGE w/ GOOSENECK VENT (VENT CONNECTION)	K	4" FNPT FITTING (VENT)
E	36" x 36" SQ. MANWAY w/ 1/8" THK. EPDM GASKET & MANWAY EXTENSION W/ ALUMINUM COVER PLATE AND HANDLES	L	2" FULL COUPLING (ELECTRICAL CONNECTION)
		M	GRADE LEVEL MANWAY – 36"Ø H-20 W/ LOCKABLE COVER PLATE
F	HTM SPIN BRK'T – MFG USE ONLY – NOT TO BE USED FOR FIELD INSTALLATION	N	GRADE LEVEL MANWAY – 48" x 48" H-20 W/ LOCKABLE COVER PLATE

			
UNLESS NOTED, TOLERANCES ARE +/− 1"			
HighDRO WATER STORAGE TANK 2,000 GAL 64"Ø SINGLE-WALL UNDERGROUND HORIZONTAL FOR POTABLE WATER WITH PUMP OUT			
CUSTOMER:			
PROJECT:			
QUOTE NO:		CHK'D BY:	
SCALE: 3/8"=1'-0"	DATE:	DWG. BY:	DWG. NO.: 02000HGSHDPTWP064