

GENERAL SPECIFICATIONS

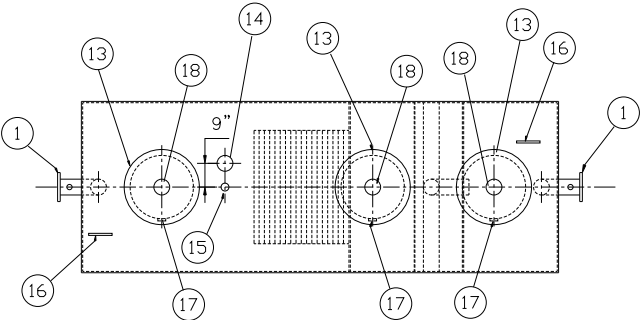
NO. REQ'D:(1)
CAPACITY: 2000 GALLON
TYPE: HT, HIGHGUARD, SINGLE WALL, "G" SERIES
MATERIAL: MILD CARBON STEEL
FLOW RATE: 200 GPM
GAUGE:
SHELL- 7 GA.
HEADS- 7 GA.
SURFACE PREP: SP-6 BLAST ALL EXTERIOR SURFACES
COATING: MATERIAL THICKNESS
EXTERIOR- HIGHGUARD 75 MILS
INTERIOR- NONE

CONSTRUCTION : LAP FIT & WELD ALL EXTERIOR SEAMS
OPERATING PRESSURE: ATMOSPHERIC

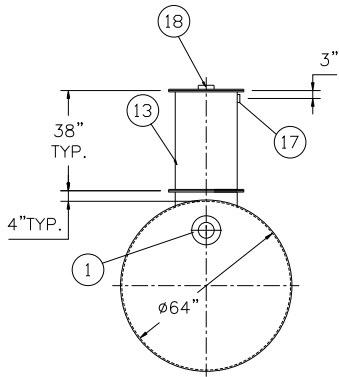
NOTES:
1. POLYURETHANE HIGHGUARD TANK IS NOT APPROVED FOR THE STORAGE OF HEATED PRODUCTS
2. ALL VENT PIPING BY INSTALLER
3. 15000 VOLT SPARK TEST PROVIDED AT FACTORY

PROVIDED EQUIPMENT

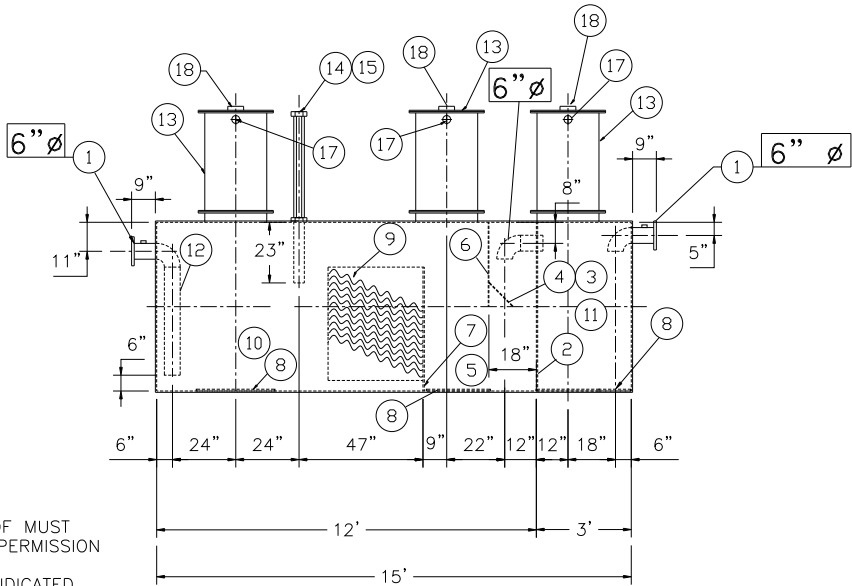
- 1. 150# R.F.S.O. FLANGE W/ 2" NPT FOR VENT
- 2. 7 GA. BULKHEAD
- 3. VELOCITY HEAD DIFFUSION BAFFLE
- 4. WEAR PLATE
- 5. SEDIMENT CHAMBER
- 6. UNDERFLOW BAFFLE
- 7. SLUDGE BAFFLE
- 8. STRIKER PLATES
- 9. PARALLEL CORRUGATED PLATE COALESCER
- 10. OIL/WATER SEPARATOR CHAMBER
- 11. SLUDGE CHAMBER
- 12. OUTLET DOWNCOMER
- 13. 24"Ø MANWAY WITH BOLT-ON EXTENSION SHIPPED LOOSE
- 14. 4"Ø FTG. FOR OIL PUMP-OUT W/ INTERNAL PIPE INSTALLED AND RISER PIPE SHIPPED LOOSE
- 15. 2"Ø FTG. FOR LEVEL SENSOR W/ RISER PIPE SHIPPED LOOSE
- 16. LIFTING LUG
- 17. 2"Ø FTG. FOR VENT TYP. BOTH MANWAYS
- 18. 4"Ø FTG. FOR GAUGE WITH PLUG TYP. BOTH MANWAYS



PLAN



END VIEW



ELEVATION

NOTE :
ALL RIGHTS RESERVED. THIS DRAWING OR ANY PART THEREOF MUST NOT BE REPRODUCED IN ANY FORM WITHOUT THE WRITTEN PERMISSION OF HIGHLAND TANK.
HIGHLAND TANK SHALL BE RESPONSIBLE ONLY FOR ITEMS INDICATED ON THIS FABRICATION DRAWING UNLESS OTHERWISE NOTED. CUSTOMER IS RESPONSIBLE FOR VERIFYING CORRECTNESS OF SIZE / LOCATION OF FITTINGS , ACCESSORIES & COATINGS SHOWN ON THIS DRAWING

REVISIONS			
<div><div><div><div><div></div><div>HIGHLAND TANK MFG. CO.</div></div><div><div></div><div>U.S. Patent #4,722,800 #6,606,224</div></div><div><div></div><div>Canadian Patent # 1,296,263 # 2,389,065</div></div></div><div><div>2000 GALLON OIL WATER SEPARATOR HT,HIGHGUARD,SINGLE WALL,"G" SERIES</div><div>CUSTOMER:</div><div>PROJECT:</div><div>QUOTE NO:</div><div>CHK'D BY:</div></div></div></div>			
SCALE: 1/4"=1'-0"			
DATE: 8-9-05			
DWG. NO.: 02000HGSWHTG			