

GENERAL SPECIFICATIONS

NO. REQ'D: (1)  
CAPACITY: 2000 GALLONS  
TYPE: HT, HIGHGUARD, SINGLE WALL, "J" SERIES  
MATERIAL: MILD CARBON STEEL  
FLOW RATE: 200 GPM

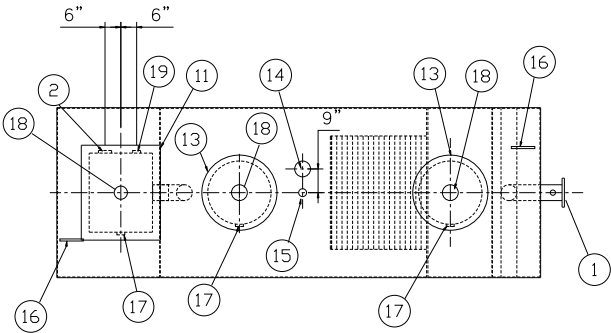
GAUGE:  
SHELL- 7 GA.  
HEADS- 7 GA.

SURFACE PREP:  
- SSPC NO.6 BLAST ALL EXTERIOR SURFACES  
- SSPC NO.10 BLAST ALL INTERIOR SURFACES  
OF WATER CHAMBER ONLY

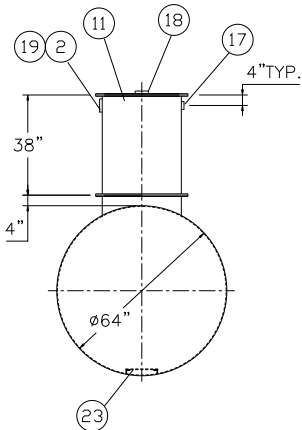
COATING: MATERIAL THICKNESS  
EXTERIOR- HIGHGUARD (75 MILS)  
INTERIOR- POLYURETHANE (15 MILS)  
INTERIOR OF WATER  
CHAMBER ONLY

CONSTRUCTION : LAP FIT AND WELD ALL EXTERIOR SEAMS  
OPERATING PRESSURE: ATMOSPHERIC

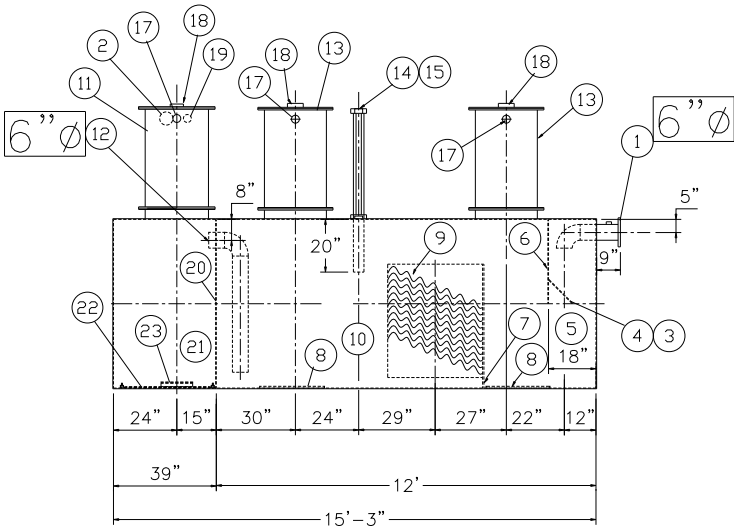
- NOTES:
- 1. POLYURETHANE HIGHGUARD TANK IS NOT APPROVED FOR THE STORAGE OF HEATED PRODUCTS
  - 2. CUSTOMER TO PROVIDE PUMPING INFORMATION FOR PROPER PUMP SIZING & PUMPOUT DESIGN.
  - 3. 15000 VOLT SPARK TEST PROVIDED AT FACTORY
  - 4. ALL VENT PIPING BY INSTALLER



PLAN



END VIEW



ELEVATION

PROVIDED EQUIPMENT

- 1. 150# R.F.S.O. FLANGE W/ 2" NPT FOR VENT
- 2. 4"Ø FTG. FOR PUMP CONDUIT
- 3. VELOCITY HEAD DIFFUSION BAFFLE
- 4. WEAR PLATE
- 5. SEDIMENT CHAMBER
- 6. UNDERFLOW BAFFLE
- 7. SLUDGE BAFFLE
- 8. STRIKER PLATES
- 9. PARALLEL CORRUGATED PLATE COALESCER
- 10. OIL/WATER SEPARATOR CHAMBER
- 11. RECTANGULAR MANWAY W/ BOLT-ON EXTENSION SHIPPED LOOSE
- 12. OUTLET DOWNCOMER
- 13. 24"Ø MANWAY WITH BOLT-ON EXTENSION SHIPPED LOOSE
- 14. 4"Ø FTG.FOR OIL PUMP-OUT WITH INTERNAL PIPE INSTALLED & RISER PIPE SHIPPED LOOSE
- 15. 2"Ø FTG. FOR LEVEL SENSOR WITH RISER PIPE SHIPPED LOOSE
- 16. LIFTING LUG
- 17. 2"Ø FTG. FOR VENT
- 18. 4"Ø FTG. FOR GAUGE WITH PLUG
- 19. 2"Ø FTG. FOR EFFLUENT WATER CHAMBER LEVEL SENSOR
- 20. 1/4" BULKHEAD
- 21. EFFLUENT WATER CHAMBER
- 22. INTERNAL RIBBON ANODE
- 23. PUMP MOUNT

REVISIONS



**Highland Tank**

U.S. Patent #4,722,800 Canadian Patent # 1,296,263  
#6,606,224 # 2,389,065

2000 GALLON OIL WATER SEPARATOR  
HT,HIGHGUARD,SINGLE WALL,"J" SERIES

CUSTOMER:

PROJECT:

QUOTE NO:

CHK'D BY:

SCALE: 1/4"=1'-0"

DATE: 8-9-05

DWG. BY:

DWG. NO.:

02000HGSWHTJ