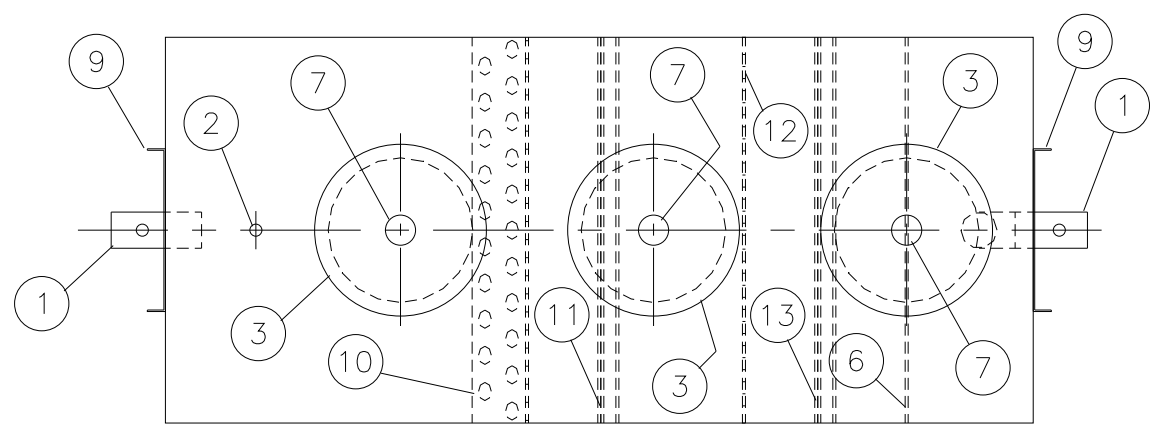


DESIGN DATA

NO. REQ'D-(1)		
CAPACITY-2000 GALLONS		
TYPE- UNDERGROUND, SINGLE WALL, HIGHGUARD		
MATERIAL-MILD CARBON STEEL		
FLOW RATE- 300 GAL/MIN, 0.668 FT ³ /S		
GAUGE:		
SHELL-	7 GA	
HEADS-	7 GA	
MAX BURIAL DEPTH- 60"-CONSULT HT FOR DEEPER BURIAL		
CONSTRUCTION-LAP FIT AND WELD ALL EXTERIOR SEAMS ONLY		
SURFACE PREPARATION:		
INNER TANK-NONE		
OUTER TANK-SSPC NO.6 BLAST		
COATING:	MATERIAL	THICKNESS
EXTERIOR-	POLYURETHANE	(75 MILS)
INTERIOR-	NONE	
OPERATING PRESSURE- ATMOSPHERIC		

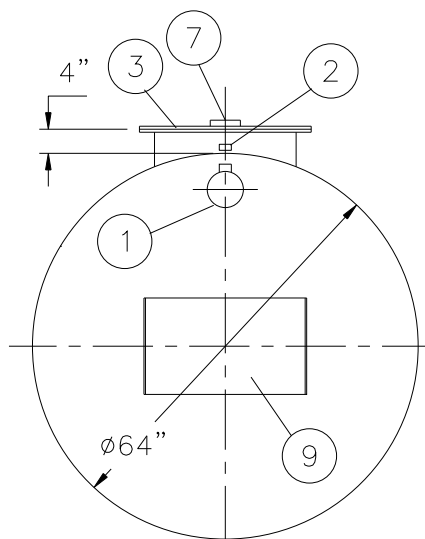
LEGEND

1	CARBON STEEL PIPE STUB WITH 2" FNPT FITTING FOR VENT
2	2" FNPT FITTING FOR VENT
3	24" MANHOLE
4	6" CARBON STEEL ELBOW
5	STRIKER PLATE - 1/4" CARBON STEEL
6	SLUDGE BAFFLE - 7 GA. CARBON STEEL
7	4" FNPT FITTING FOR GAUGE
8	6" CARBON STEEL DOWNCOMER PIPE
9	HTM SPIN BRK'T - MFG USE ONLY - NOT TO BE USED FOR FIELD INSTALLATION
10	VELOCITY HEAD DIFFUSION SCREEN - 7 GA. CARBON STEEL WITH 3" Ø PERFORATIONS SEE DETAIL-A
11	SEDIMENT BAFFLE - 7 GA. CARBON STEEL WITH BRACING ON OUTLET SIDE
12	TRASH SCREEN - 7 GA. CARBON STEEL WITH 2" Ø PERFORATIONS SEE DETAIL-B
13	SEDIMENT WEIR - 7 GA. CARBON STEEL WITH BRACING ON OUTLET SIDE

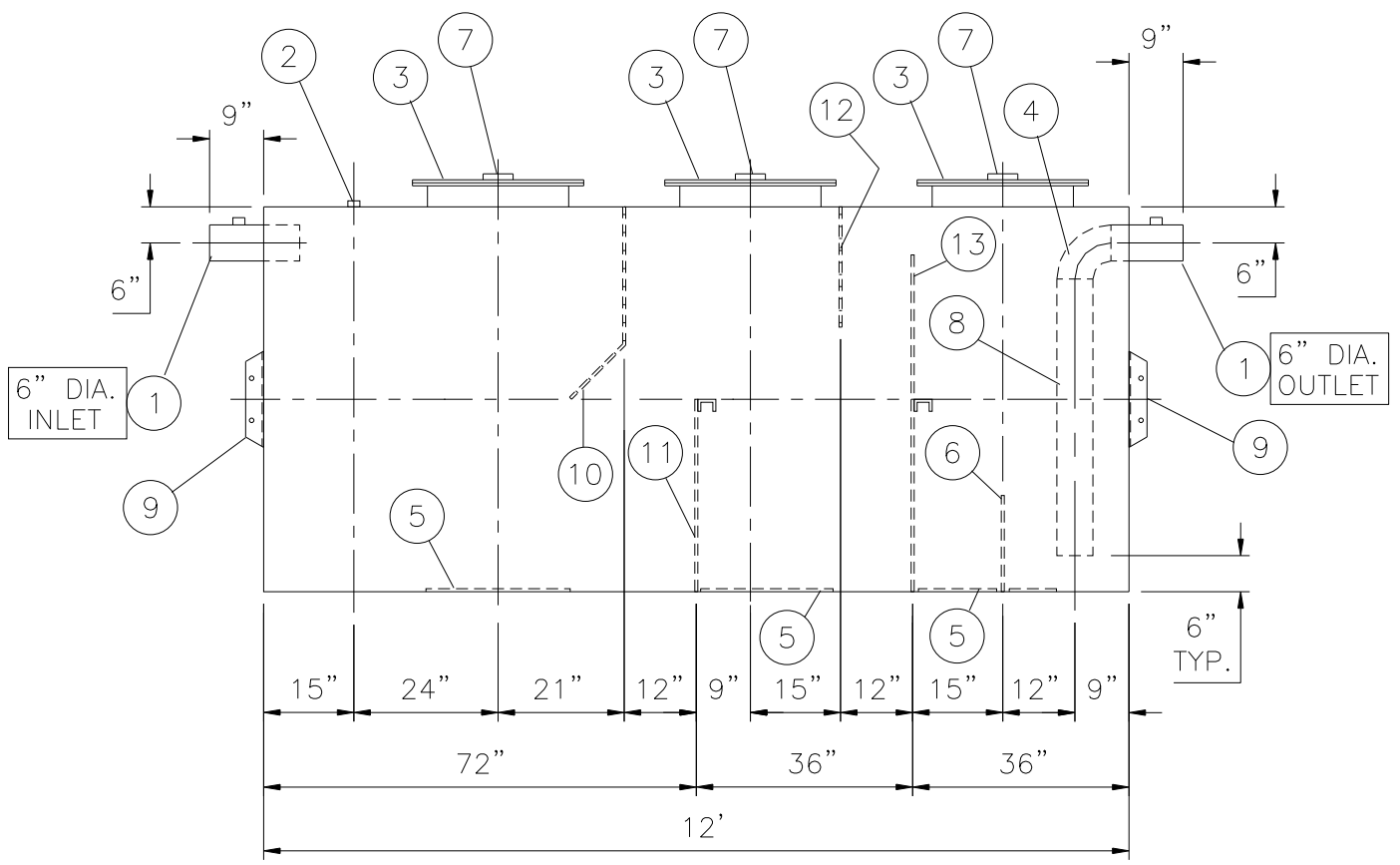


PLAN

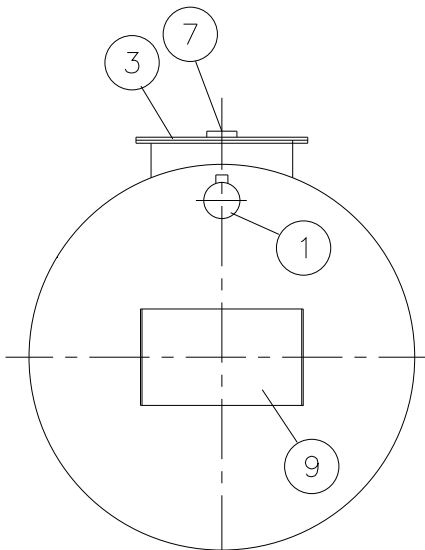
NOT FOR FABRICATION



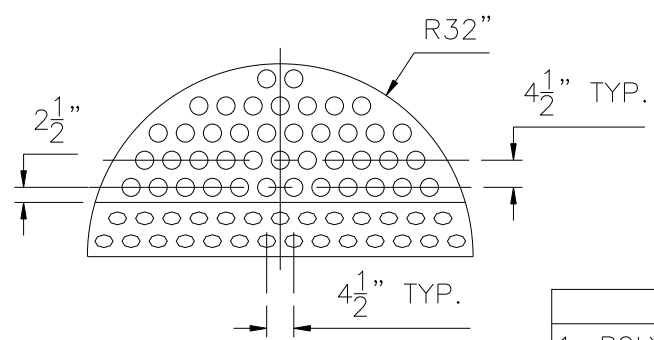
END VIEW



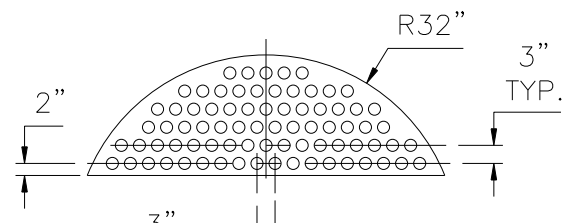
ELEVATION



END VIEW




DETAIL-A



DETAIL-B

- NOTES**
- POLYURETHANE HIGHGUARD TANK IS NOT APPROVED FOR THE STORAGE OF HEATED PRODUCTS
 - 15000 VOLT SPARK TEST PROVIDED AT FACTORY
 - ALL VENT PIPING BY INSTALLER
 - BOLT ON EXTENSIONS ARE NOT PROVIDED WITH A STANDARD UNIT. CUSTOMER TO ADVISE IF EXTENSIONS ARE NEEDED AND WHAT THEIR LENGTHS SHOULD BE

NOTE: ALL RIGHTS RESERVED. THIS DRAWING MUST NOT BE REPRODUCED IN ANY FORM WITHOUT THE WRITTEN PERMISSION OF HIGHLAND TANK. HIGHLAND TANK SHALL BE RESPONSIBLE ONLY FOR ITEMS INDICATED ON THIS FABRICATION DRAWING UNLESS OTHERWISE NOTED. CUSTOMER IS RESPONSIBLE FOR VERIFYING CORRECTNESS OF SIZE AND LOCATION OF FITTINGS, ACCESSORIES, AND COATINGS SHOWN ON THIS DRAWING.



Highland Tank[®]

2000 GALLON SINGLE WALL HIGHGUARD SOLIDS STORMWATER INTERCEPTOR

CUSTOMER:

PROJECT:

QUOTE NO:

SCALE: 3/8"=1'-0" DATE: 9-16-09 DWG. BY: DWG. NO: 02000SSIHGSW

CHK'D BY: