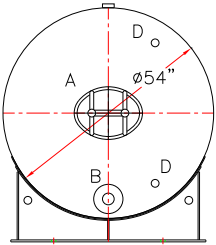
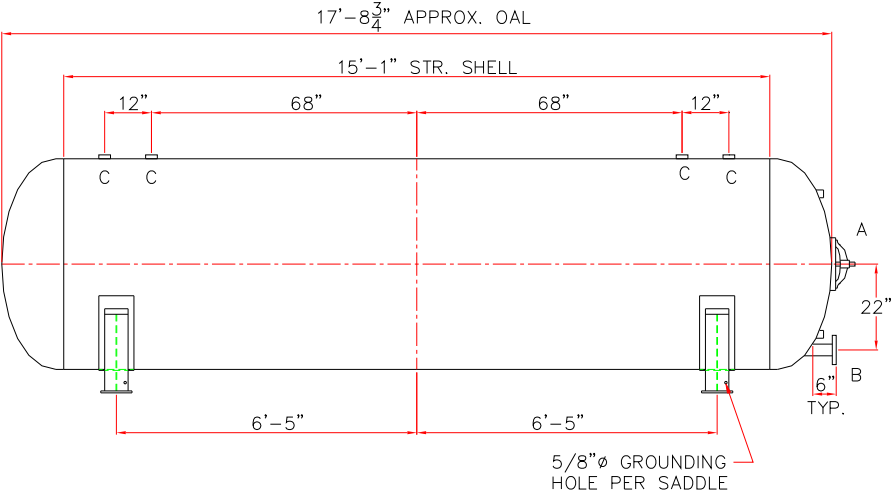
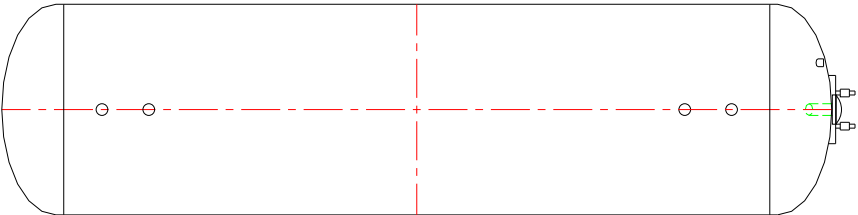


NOTE: ALL RIGHTS RESERVED. THIS DRAWING MUST NOT BE REPRODUCED IN ANY FORM WITHOUT THE WRITTEN PERMISSION OF HIGHLAND TANK®. HIGHLAND TANK® SHALL BE RESPONSIBLE ONLY FOR ITEMS INDICATED ON THIS FABRICATION DRAWING UNLESS OTHERWISE NOTED. CUSTOMER IS RESPONSIBLE FOR VERIFYING CORRECTNESS OF SIZE AND LOCATION OF FITTINGS, ACCESSORIES, AND COATINGS SHOWN ON THIS DRAWING.

TOUCH UP OF FINISHED PAINT IS REQUIRED BY INSTALLATION CONTRACTOR. TOUCH UP PAINT SHIPPED WITH TANK.



| DESIGN DATA |
|---|
| CAPACITY – 2,000 GALLONS |
| TYPE – ABOVEGROUND HYDROPNEUMATIC VESSEL |
| NO. REQ. – ____ |
| MAX. ALLOW. WORKING PRES. – ____ PSIG @ 140 °F |
| MAX ALLOW. EXTERNAL W.P. – ____ PSIG @ 140 °F |
| MIN. DESIGN METAL TEMP – -20°F @ ____ PSIG |
| HYDROSTATIC TEST PRESSURE – ____ PSIG |
| CORROSION ALLOWANCE – ____ |
| POSTWELD HEAT TREATED – ____ |
| RADIOGRAPHY – ____ |
| HEADS – ____ SA516 GR 70 ASME 2:1 ELLIPTICAL |
| SHELL – ____ SA516 GR 70 |
| INT. FINISH – SSPC, SP10 BLAST HIGH DRO™ LINER PLUS FOR NSF/ANSI 61 POTABLE WATER OR NSF LISTED EPOXY FOR HOT WATER APPLICATIONS |
| EXT. FINISH – GRAY SHOP PRIMER OR OTHER TO BE SPECIFIED |
| CONSTRUCTION – BUTT WELD INSIDE AND OUTSIDE |
| ALL TANK FABRICATIONS TO BE IN ACCORDANCE WITH ASME SECTION VIII, DIVISION 1, LATEST EDITION, LATEST ADDENDA ALL SHELL, HEAD, FITTINGS, AND MANWAYS TO BE WELDED TO BIGBEE STEEL WELD PROCEDURE PER DRAWING F11151 |
| HIGHLAND TANK SERIAL # – – |

| LEGEND | | | | | | |
|--------|-----------|-----------|--------|------------|--------|---------------------------|
| MARK | SIZE | TYPE | RATING | NOZZLE | FLANGE | COMMENTS |
| A | 12" X 16" | ELLIPT. | 300# | SA106 GR C | --- | w/ NEOPRENE RUBBER GASKET |
| B | --- | RFSO | 150# | SA106 GR B | SA105 | --- |
| C | --- | HALF CPLG | 3000# | SA105 | --- | --- |
| D | --- | HALF CPLG | 3000# | SA105 | --- | --- |



Highland Tank®

2000 GALLON 54" Ø ABOVEGROUND
HORIZONTAL HYDROPNEUMATIC VESSEL

CUSTOMER: _____

PROJECT: _____

QUOTE NO: _____

SCALE: 3/8" = 12" DATE: _____ DWG. BY: _____

CHK'D BY: _____

DWG. NO: 02000HYPV54