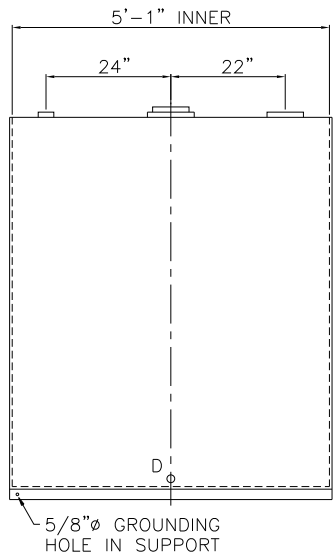
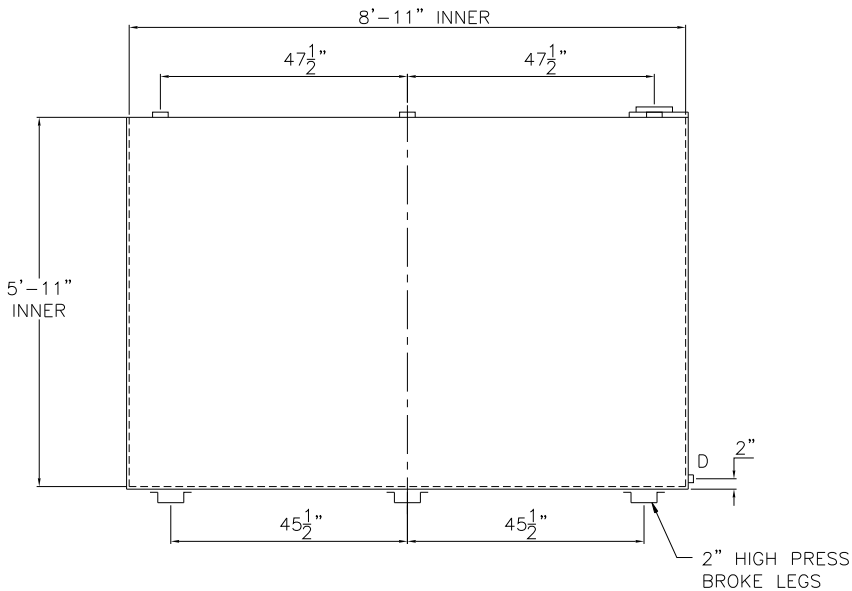
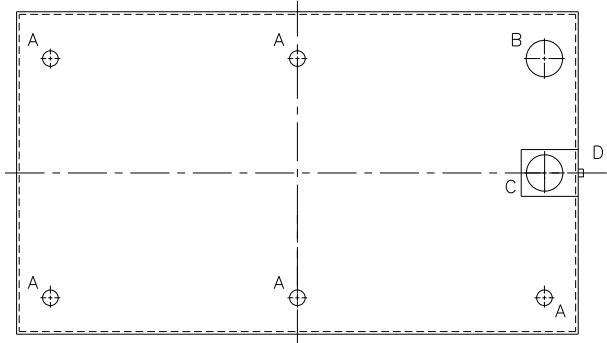


NOTE: ALL RIGHTS RESERVED. THIS DRAWING MUST NOT BE REPRODUCED IN ANY FORM WITHOUT THE WRITTEN PERMISSION OF HIGHLAND TANK®. HIGHLAND TANK® SHALL BE RESPONSIBLE ONLY FOR ITEMS INDICATED ON THIS FABRICATION DRAWING UNLESS OTHERWISE NOTED. CUSTOMER IS RESPONSIBLE FOR VERIFYING CORRECTNESS OF SIZE AND LOCATION OF FITTINGS, ACCESSORIES, AND COATINGS SHOWN ON THIS DRAWING.

TOUCH UP OF FINISHED PAINT IS REQUIRED BY INSTALLATION CONTRACTOR. TOUCH UP PAINT SHIPPED WITH TANK.



DESIGN DATA

CAPACITY – 2,000 GALLONS
TYPE – DOUBLE WALL – TYPE I
NO. REQ. – –
OPERATING PRESSURE – ATMOSPHERIC
SPECIFIC GRAVITY = 1.0
TANK MATERIAL – MILD CARBON STEEL
THICKNESS – INNER– ALL – 7 GAUGE
THICKNESS – OUTER– ALL – 7 GAUGE
CONSTRUCTION – INNER – LAP WELD OUTSIDE ONLY OUTER – LAP WELD OUTSIDE ONLY
TANK TEST – INNER – 5 PSIG OUTER – 2 PSIG AND FULL VACUUM
INT. FINISH – NONE –
EXT. FINISH – SHOP PRIMER –
LABEL – UL 142

LEGEND

A	2" FITTING
B	6" FITTING (PRIMARY EMERGENCY VENT USE)
C	6" FITTING IN INTERSTICE EXTENSION BOX – MARK WITH WARNING LABEL – SECONDARY EMERGENCY VENT USE ONLY
D	1/2" FITTING THROUGH OUTER SHELL ONLY WITH BUTTON SITE GLASS
E	–
F	–

		Highland Tank®	
2000 GAL DW LUBE TANK (S-STYLE)			
CUSTOMER:			
PROJECT:			
QUOTE NO:		CHK'D BY:	
SCALE: 1/2" = 12"	DATE:	DWG. BY:	DWG. NO: 02000LDWS