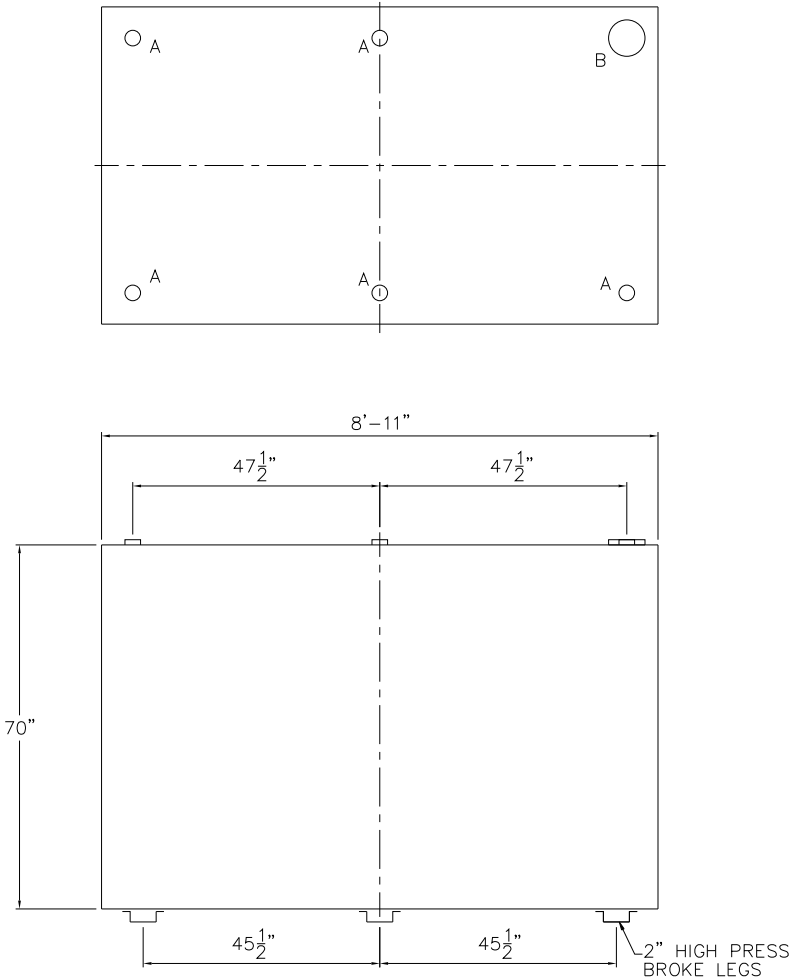


NOTE: ALL RIGHTS RESERVED. THIS DRAWING MUST NOT BE REPRODUCED IN ANY FORM WITHOUT THE WRITTEN PERMISSION OF HIGHLAND TANK®. HIGHLAND TANK® SHALL BE RESPONSIBLE ONLY FOR ITEMS INDICATED ON THIS FABRICATION DRAWING UNLESS OTHERWISE NOTED. CUSTOMER IS RESPONSIBLE FOR VERIFYING CORRECTNESS OF SIZE AND LOCATION OF FITTINGS, ACCESSORIES, AND COATINGS SHOWN ON THIS DRAWING.

TOUCH UP OF FINISHED PAINT IS REQUIRED BY INSTALLATION CONTRACTOR. TOUCH UP PAINT SHIPPED WITH TANK.



#### DESIGN DATA

CAPACITY	2000 GALLONS
TYPE	SINGLE WALL
NO. REQ.	- -
OPERATING PRESSURE	ATMOSPHERIC
SPECIFIC GRAVITY	= 1.0
TANK MATERIAL	MILD CARBON STEEL
THICKNESS	7 GAUGE
CONSTRUCTION	LAP WELD OUTSIDE ONLY
TANK TEST	-2 PSIG
INT. FINISH	NONE
EXT. FINISH	SHOP PRIMER
LABEL	UL 142

#### LEGEND

A	2" FITTING
B	6" FITTING [EMERGENCY VENT USE]
C	-
D	-
E	-
F	-

△					
		<b>Highland Tank®</b>			
2000 GAL SW LUBE TANK (S-STYLE)					
CUSTOMER:					
PROJECT:					
QUOTE NO:				CHK'D BY:	
SCALE:	DATE:	DWG. BY:	DWG. NO:		
1/2" = 12"			02000LSWS		