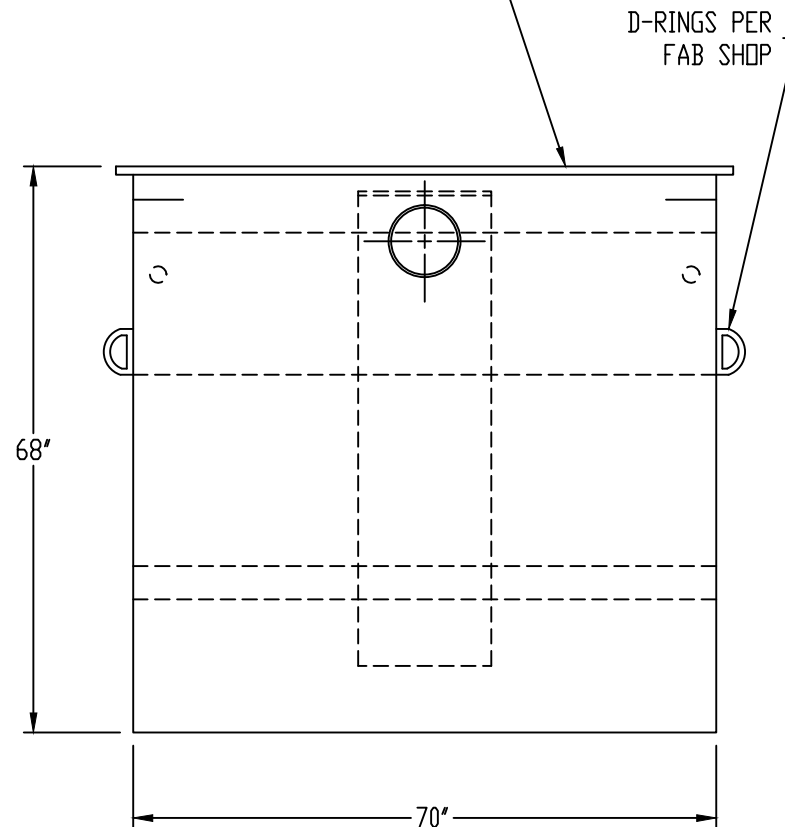


BOLT-ON DECKPLATE LIDS WITH RECESSED LIFTING RINGS - LIDS PAINTED BLACK
H-20 RATED LIDS AVAILABLE AS AN OPTION



GENERAL SPECIFICATIONS

QUANTITY: ONE (1)
MODEL: MGI-2000
STATIC WATER CAPACITY: 1,900 GAL
GREASE HOLDING CAPACITY: 4,000 LBS
MATERIAL: 1/4" CARBON STEEL
SINGLE-WALL CONSTRUCTION
SURFACE PREP: SSPC-SP 10 BLAST ALL SURFACES
INTERIOR AND EXTERIOR COATING: CHEMTHANE 2240 POLYURETHANE - 15 MILS DFT

NOTES:

STANDARD TANK MATERIAL IS COATED CARBON STEEL - STAINLESS STEEL CONSTRUCTION IS AVAILABLE.

DRAWING SHOWS STANDARD TANK HEIGHT. CUSTOMER MUST SPECIFY ACTUAL HEIGHT DIMENSION REQUIRED.

ALL PLUMBING CONNECTIONS MUST COMPLY WITH LOCAL CODES AND REGULATIONS.

CUSTOMER APPROVAL

THE CUSTOMER HAS REVIEWED THIS DRAWING AND VERIFIED THE ACCURACY OF ALL INFORMATION AND DIMENSIONS.

SIGNED: _____

DATE: _____

REVISIONS



THIS DRAWING IS SUBJECT TO CHANGE AT THE DISCRETION OF THE MANUFACTURER. CONTACT HIGHLAND TANK FOR THE MOST UP-TO-DATE INFORMATION AND DRAWINGS OF OUR PRODUCTS.



MANUAL GREASE INTERCEPTOR
MGI-2000

CUSTOMER: _____

PROJECT: _____

QUOTE NO.: _____

ORDER: _____

SCALE: NTS DATE: 2/12/18 DWG. BY: MGS DWG. NO.: MGI-2000

DIMENSION TOLERANCE: $\pm 1"$

NOTE:
ALL RIGHTS RESERVED. THIS DRAWING, OR ANY PART THEREOF, MUST NOT BE REPRODUCED IN ANY FORM WITHOUT WRITTEN PERMISSION FROM HIGHLAND TANK. UNLESS OTHERWISE NOTED, HIGHLAND TANK SHALL BE RESPONSIBLE ONLY FOR ITEMS INDICATED ON THIS FABRICATION DRAWING. THE CUSTOMER IS RESPONSIBLE FOR VERIFYING THE CORRECTNESS OF THE TYPE, SIZE, AND LOCATION OF ALL FITTINGS, ACCESSORIES, AND COATINGS SHOWN ON THIS DRAWING.