

GENERAL SPECIFICATIONS

NO. REQ'D: (1)
CAPACITY: 2000 GALLONS
TYPE: RECTANGULAR, HTC, ABOVEGROUND, SINGLE WALL
MATERIAL: MILD CARBON STEEL
FLOW RATE: 200 GPM

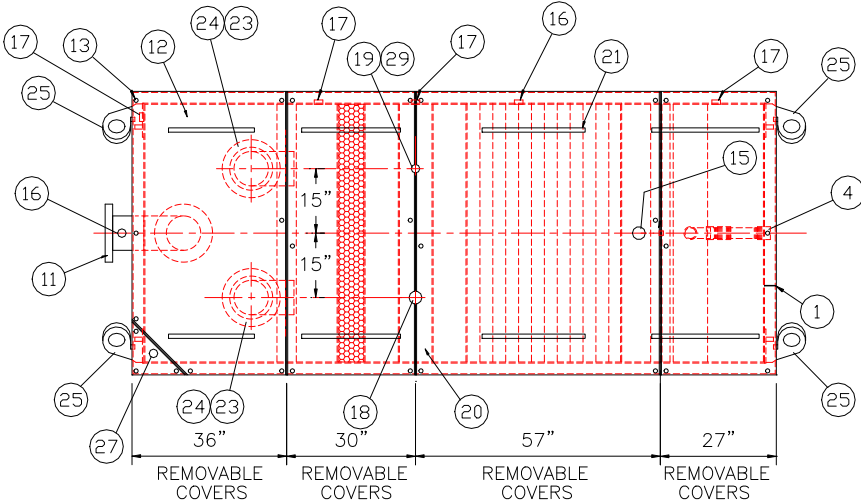
GAUGE:
SHELL- 7 GA
HEADS- 7 GA
SURFACE PREP:
SSPC NO.10 BLAST ALL INTERIOR SURFACES
SSPC NO.6 BLAST ALL EXTERIOR SURFACES

COATING:	MATERIAL	THICKNESS
EXTERIOR-	CHEMPRIME 3001	(3-6 MILS)
	CHEMLINE 3300	(2-3 MILS)
	TOP COAT "WHITE"	
INTERIOR-	CHEMLINE 4200 PW	(15 MILS)

CONSTRUCTION:
BUTT FIT & WELD ALL CORNERS IN & OUT

NOTES

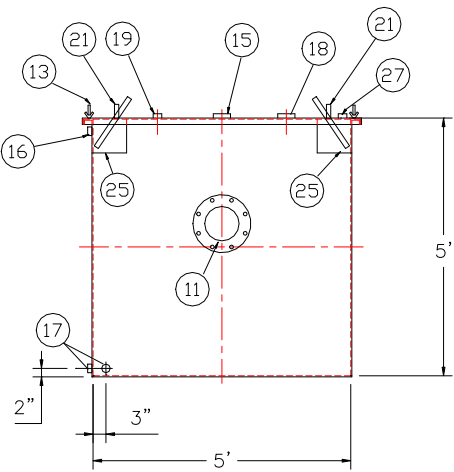
- ALL INTERNAL MATERIAL IS 10 GA
- ALL THREADED DRAIN FITTINGS TO HAVE STEEL THREADED PLUGS AND COATED WITH TANK
- ALL OTHER THREADED FITTINGS TO HAVE PVC THREADED PLUGS
- LIFTING LUGS HAVE REINFORCING PLATES



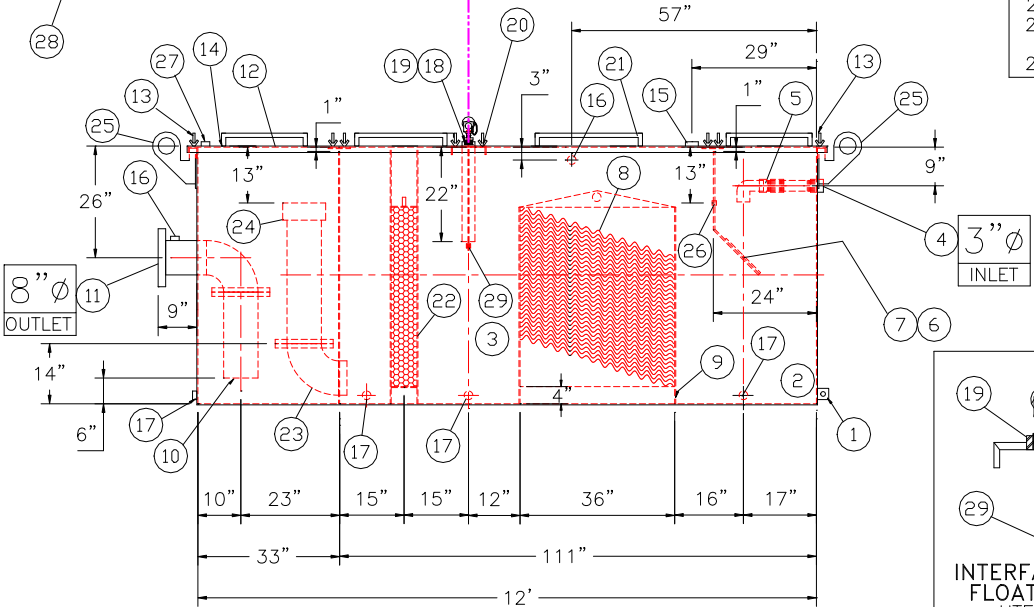
PLAN VIEW

ALL CONDUIT, WIRING AND
AIR LINES BY INSTALLER

120V POWER IN
COMPRESSED AIR IN
TO LEVEL SENSOR IN SUMP
AIR TO PUMP



END VIEW



ELEVATION

REFERENCE DWG 02000DSBSUMP FOR DEEP SUMP BASIN DETAILS

PROVIDED EQUIPMENT

- 3"x3"x1/4" FLAT W/ 9/16"Ø HOLE DRILLED IN CENTER (GROUNDING LUG)
- SEDIMENT CHAMBER
- OIL WATER SEPARATOR CHAMBER
- FNPT THREADED INLET
- PVC INLET ELBOW PIPING
- VELOCITY HEAD DIFFUSION BAFFLE - 10GA
- WEAR PLATE - 1/4"
- REMOVABLE PARALLEL CORRUGATED PLATE COALESCER (CORELLA PVC PLATES) 1" PLATE SPACING
- SLUDGE BAFFLE - 10GA
- FLANGED PVC OUTLET DOWNCOMER PIPE
- 150# RFSO FLANGED OUTLET W/ INTERNAL STEEL ELBOW AND FLANGE
- (4) PIECE COVER W/ 5/8" BOLT HOLES - 7 GA
- NUTS & BOLTS W/ LARGE WING NUTS-TYP. (CORROSION RESISTANT)
- GASKET MATERIAL (FOR EACH REMOVABLE COVER)
- 3"Ø FNPT (CLEAN-OUT)
- 2"Ø FNPT (VENT)
- 2"Ø FNPT HALF COUPLING (DRAIN) W/ STEEL PLUG
- 3"Ø FNPT FULL COUPLING W/ 3" Ø INTERNAL PVC PIPE (OIL PUMPOUT)
- 2"Ø FNPT HALF COUPLING (INTERFACE LEVEL SENSOR)
- 7GA. CROSSMEMBER 9" WIDE FOR OIL PUMP-OUT AND LEVEL SENSOR FTG.
- HANDLES PER H.T. STANDARD
- 6" THICK REMOVABLE PETROSCREEN CARTRIDGE COALESCER
- 8"Ø STEEL ELBOW W/ FLANGE WELDED TO TOP FOR PVC RISER PIPES
- 8"Ø ADJUSTABLE FERNCO COUPLING
- 1/2" THICK LIFTING LUG ANGLED TOWARD CENTER
- 1"Ø FNPT COUPLING W/ PLUG
- 2"Ø FNPT HALF COUPLING (SPARE)
- PUMP CONTROL AND ALARM PANEL 120V/60HZ/1PH. SEE DSB DRAWING FOR MODEL #
- HTF-1 FLOAT INTERFACE SENSOR W/ NEMA 4 CAP

REVISIONS



Highland Tank

U.S. Patent #4,722,800 Canadian Patent # 1,296,263
#6,606,224 # 2,389,065

2000 GALLON OIL WATER SEPARATOR
RECTANGULAR, HTC, SINGLE WALL

CUSTOMER:

PROJECT:

QUOTE NO:

CHK'D BY:

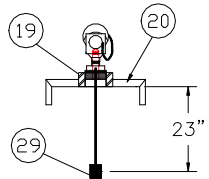
SCALE: 3/8"=1'-0"

DATE: 6-28-22

DWG. BY: REM

DWG. NO:

02000DSBOWS



INTERFACE SENSOR
FLOAT POSITION
HTF-2A-23E

UNLESS OTHERWISE SPECIFIED DIMENSIONS ARE IN INCHES
TOLERANCES ARE + .00 - .12

NOTE :
ALL RIGHTS RESERVED. THIS DRAWING OR ANY PART THEREOF MUST NOT BE REPRODUCED IN ANY FORM WITHOUT THE WRITTEN PERMISSION OF HIGHLAND TANK.
HIGHLAND TANK SHALL BE RESPONSIBLE ONLY FOR ITEMS INDICATED ON THIS FABRICATION DRAWING UNLESS OTHERWISE NOTED. CUSTOMER IS RESPONSIBLE FOR VERIFYING CORRECTNESS OF SIZE / LOCATION OF FITTINGS , ACCESSORIES & COATINGS SHOWN ON THIS DRAWING

WILDEN AIR DIAPHRAGM PUMP MODEL: XPS1520/AAAAA/ZGS/BN/BN/0248
WITH INLET AND DISCHARGE FACING AIR INLET
THREE FLOAT LEVEL SENSOR MODEL: HTF-2C-50A-24A-17A
CONTROL PANEL MODEL: S-115PC-ALRM 2-3/4"

DRAWING 2 OF 2

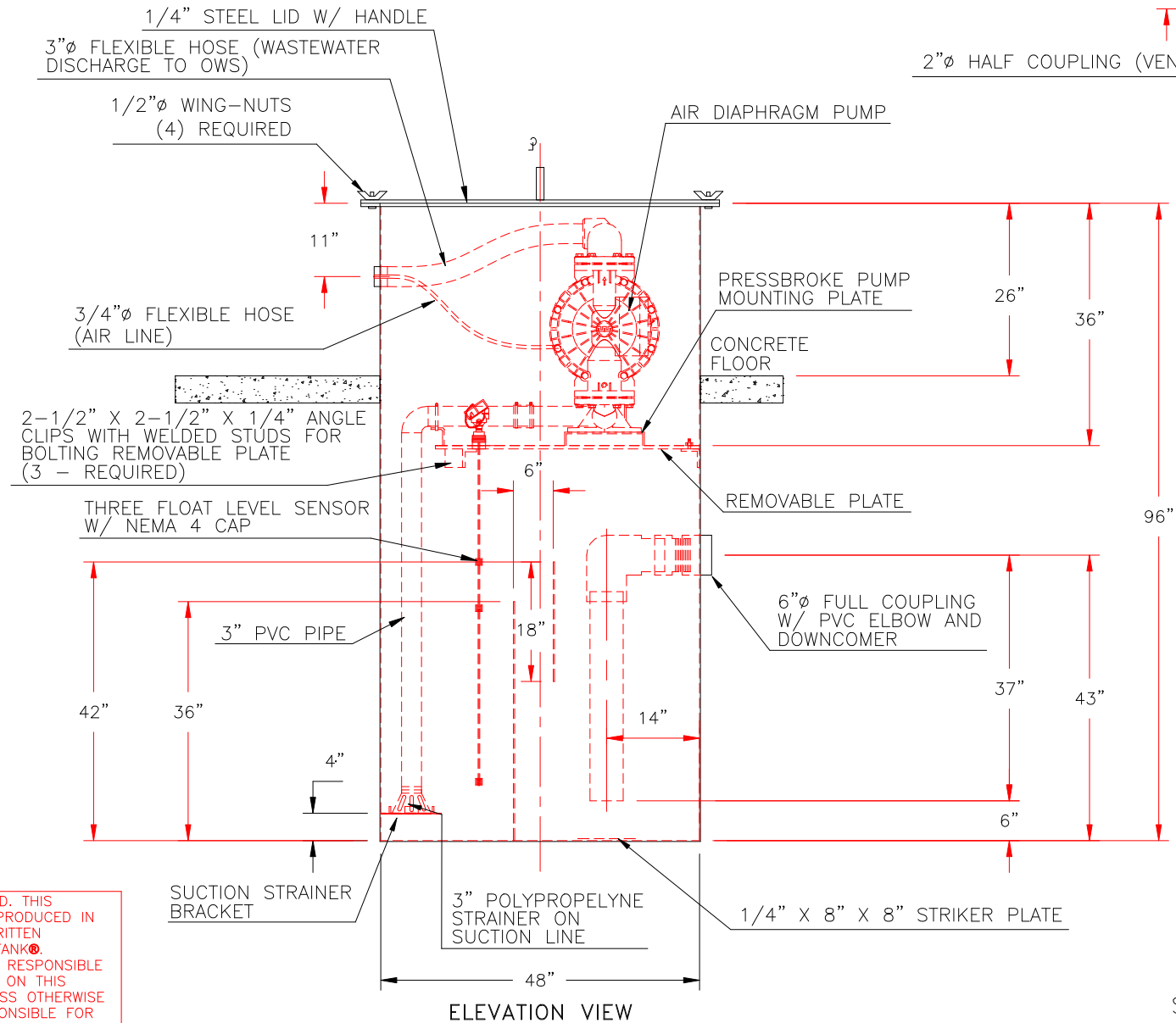
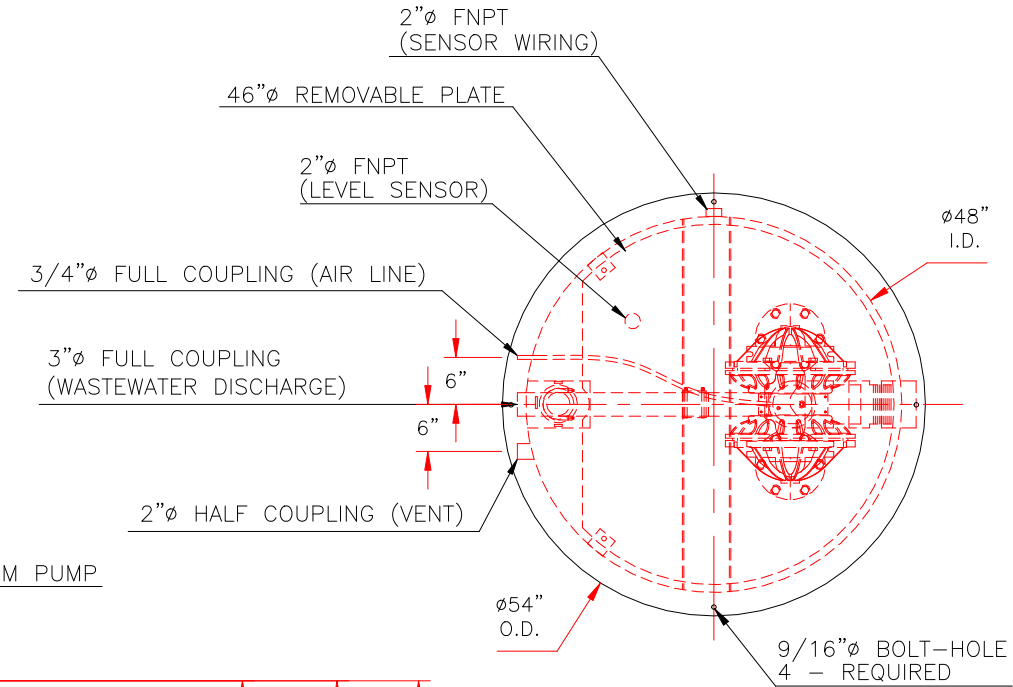
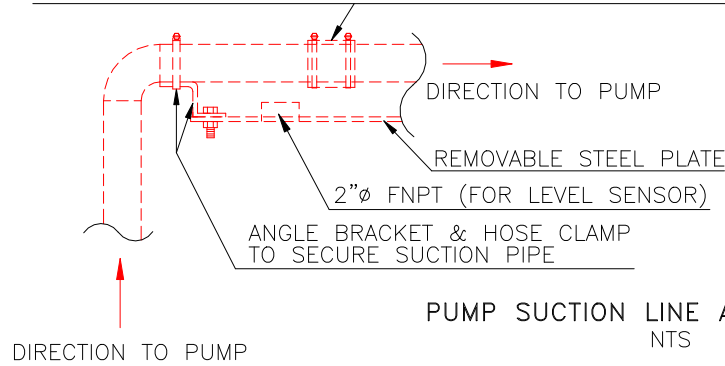
GENERAL SPECIFICATIONS

CAPACITY: 752 GALLONS
MATERIAL: MILD CARBON STEEL
GAUGE OR THICKNESS:
SHELL- 7GA
BOTTOM- 7GA
BAFFLE- 7GA
SURFACE PREP:
SSPC NO. 10 BLAST ALL INTERIOR SURFACES
SSPC NO. 6 BLAST ALL EXTERIOR SURFACES
COATING:
INTERIOR: POLYURETHANE (15 MILS)
EXTERIOR: POLYURETHANE (15 MILS)
FLOW RATE - 200 GPM

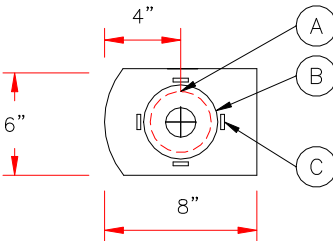
NOTES

1. SLUDGE BAFFLE MADE FROM 7GA.
2. AIR PRESSURE TO PUMP TO BE ADJUSTED TO ACHIEVE 200 GPM MAX FLOW RATE.

FERNCO CONNECTION
TO CONNECT PUMP & SUCTION LINE (AS CLOSE AS POSSIBLE TO PUMP CONNECTION)



A= 4" DIA. THRU HOLE
B= 4 7/8" O.D. STRAINER
C= 1"x1" TABS ON 90° CENTERS
ON 5 1/4" I.D. CIRCLE



NOTE: ALL RIGHTS RESERVED. THIS
DRAWING MUST NOT BE REPRODUCED IN
ANY FORM WITHOUT THE WRITTEN
PERMISSION OF HIGHLAND TANK®.
HIGHLAND TANK® SHALL BE RESPONSIBLE
ONLY FOR ITEMS INDICATED ON THIS
FABRICATION DRAWING UNLESS OTHERWISE
NOTED. CUSTOMER IS RESPONSIBLE FOR
VERIFYING CORRECTNESS OF SIZE AND
LOCATION OF FITTINGS, ACCESSORIES, AND
COATINGS SHOWN ON THIS DRAWING.

SEE DWG: 02000DSBOWS FOR TANK DRAWING

UNLESS OTHERWISE SPECIFIED DIMENSIONS ARE IN INCHES
TOLERANCES ARE + OR - 1"



Highland Tank®

96" SUMP W/ INTERNAL PUMP®

CUSTOMER:

PROJECT:

QUOTE NO:

CHK'D BY:

SCALE:
1/2"=1'-0"

DATE:
6-28-22

DWG. BY:
REM

DWG. NO:

02000DSBSUMP