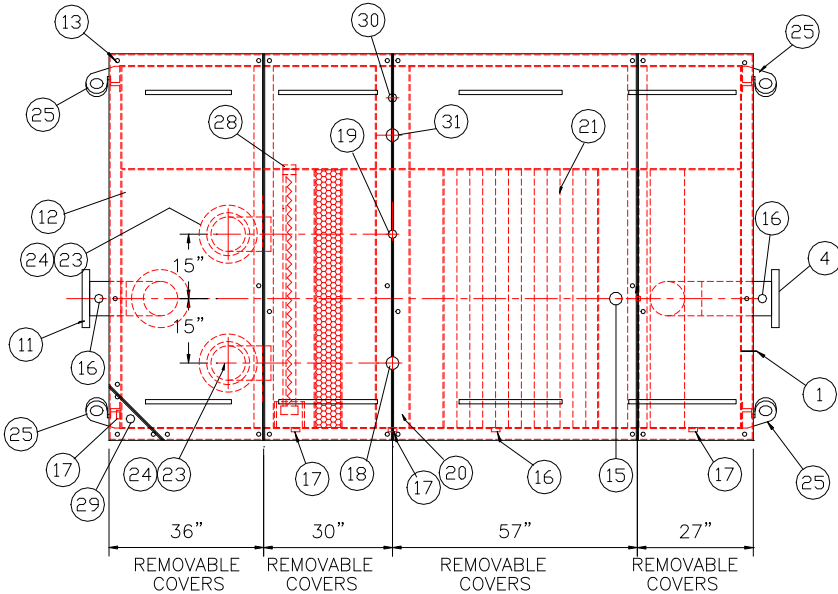


GENERAL SPECIFICATIONS

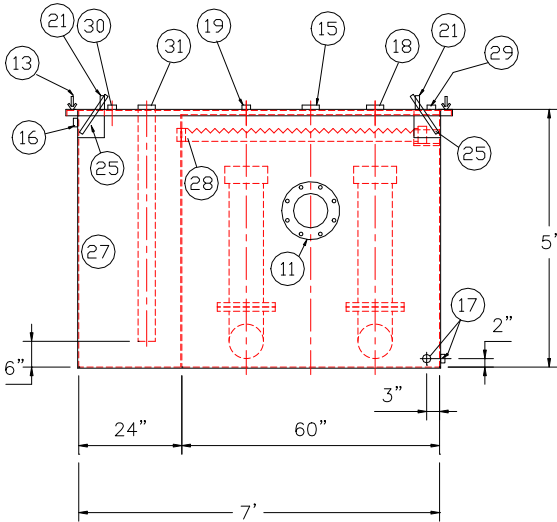
NO. REQ'D: (1)
CAPACITY: 2000 GALLONS
TYPE: RECTANGULAR, HTC, ABOVEGROUND, S--SERIES
MATERIAL: MILD CARBON STEEL
FLOW RATE: 200 GPM
GAUGE: 7 GA THROUGHOUT
SURFACE PREP:
SSPC NO.10⁺ BLAST ALL INTERIOR SURFACES
SSPC NO.6 BLAST ALL EXTERIOR SURFACES
COATING: MATERIAL THICKNESS
EXTERIOR-- CHEMPRIME 3001 (3-6 MILS)
CHEMLINE 3300 (2-3 MILS)
TOP COAT "WHITE"
INTERIOR-- CHEMLINE 4200 PW (15 MILS)
CONSTRUCTION:
BUTT FIT AND WELD ALL CORNERS IN & OUT

NOTES

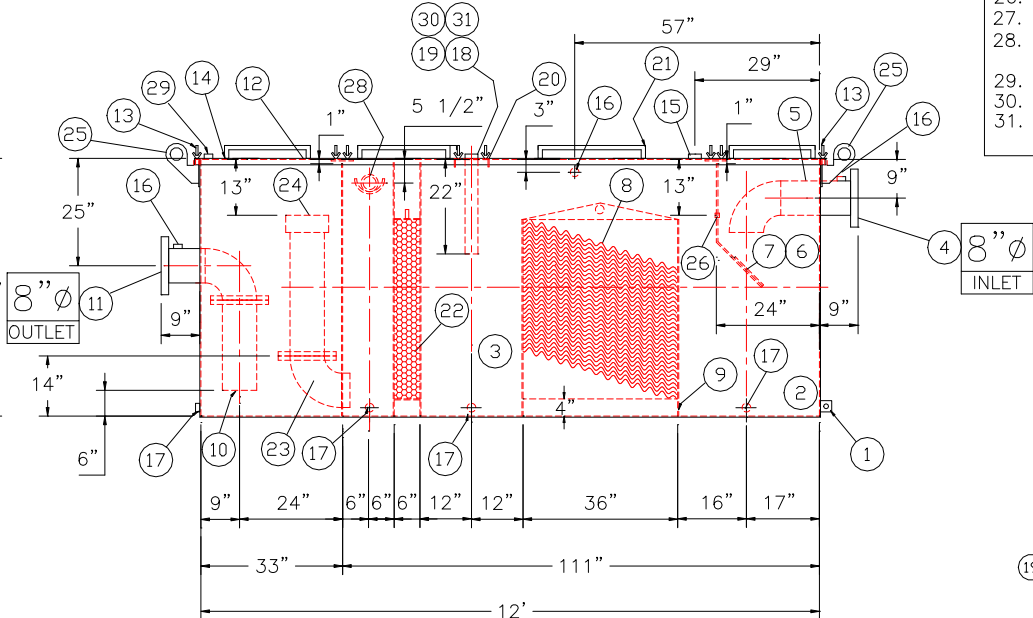
- 1. ALL INTERNAL MATERIAL IS 10 GA
- 2. ALL THREADED DRAIN FITTINGS TO HAVE STEEL THREADED PLUGS AND COATED WITH TANK
- 3. ALL OTHER THREADED FITTINGS TO HAVE PVC THREADED PLUGS
- 4. LIFTING LUGS HAVE REINFORCING PLATES



PLAN VIEW



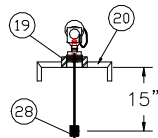
END VIEW



ELEVATION

PROVIDED EQUIPMENT

- 3"x3"x1/4" FLAT W/ 9/16"Ø HOLE DRILLED IN CENTER (GROUNDING LUG)
- SEDIMENT CHAMBER
- OIL WATER SEPARATOR CHAMBER
- 150# RFSSO FLANGED INLET
- STEEL INLET ELBOW PIPING
- VELOCITY HEAD DIFFUSION BAFFLE 10GA
- WEAR PLATE (1/4" MATERIAL)
- REMOVABLE PARALLEL CORRUGATED PLATE COALESCER (CORELLA PVC PLATES) 1" PLATE SPACING
- SLUDGE BAFFLE - 10GA
- PVC OUTLET DOWNCOMER PIPE
- 150# RFSSO FLANGED OUTLET W/ INTERNAL STEEL ELBOW AND FLANGE
- (4) PIECE COVER W/ 5/8" BOLT HOLES - 7 GA
- NUTS & BOLTS W/ LARGE WING (CORROSION RESISTANT)
- GASKET MATERIAL (FOR EACH REMOVABLE COVER)
- 3"Ø FNPT (CLEAN-OUT)
- 2"Ø FNPT (VENT)
- 2"Ø FNPT (DRAIN)
- 3"Ø FNPT FULL COUPLING WITH 3" INTERNAL PVC PIPE (OIL PUMP OUT IN SEPERATOR CHAMBER)
- 2"Ø FNPT (SEPARATOR CHAMBER INTERFACE LEVEL SENSOR)
- 7GA. CROSSMEMBER FOR OIL PUMP-OUT & LEVEL SENSOR FITTINGS IN SEPARATOR AND OIL HOLDING CHAMBERS
- HANDLES PER H.T. STANDARD
- 6" THICK PETROSCREEN COALESCER MATERIAL
- 8"Ø STEEL ELBOW W/ FLANGE WELDED TO TOP FOR PVC RISER PIPES
- 8"Ø ADJUSTABLE FERNCO COUPLING
- 1/2" THICK LIFTING LUG ANGLED TOWARD CENTER
- 1"Ø FNPT COUPLING W/ PLUG
- OIL HOLDING COMPARTMENT
- 3" FNPT COUPLING WITH SAWTOOTH TYPE PVC OIL SKIMMER & PIPE SUPPORT SHELF
- 2"Ø FNPT (EFFLUENT WATER CHAMBER LEVEL SENSOR)
- 2"Ø FNPT (HIGH LEVEL OIL HOLDING CHAMBER LEVEL SENSOR)
- 3"Ø FNPT FULL COUPLING WITH 3" INTERNAL PVC PIPE (OIL PUMP OUT IN OIL HOLDING CHAMBER)



INTERFACE SENSOR
FLOAT POSITION
HTF-2A-15E

REVISIONS



Highland Tank

U.S. Patent #4,722,800 Canadian Patent # 1,296,263
#6,606,224 # 2,389,065

2000 GALLON OIL WATER SEPARATOR
RECTANGULAR, HTC, S--SERIES

CUSTOMER:

PROJECT:

QUOTE NO:

CHK'D BY:

SCALE: 3/8"=1'-0"

DATE:

DWG. BY:

DWG. NO:

02000RECSWHTCS

GENERAL SPECIFICATIONS

NO. REQ'D: (1)
CAPACITY: 2000 GALLONS
TYPE: RECTANGULAR, HTC, ABOVEGROUND, S-SERIES
MATERIAL: MILD CARBON STEEL
FLOW RATE: 200 GPM
GAUGE: 7 GA THROUGHOUT
SURFACE PREP:
SSPC NO.10 BLAST ALL INTERIOR SURFACES
SSPC NO.6 BLAST ALL EXTERIOR SURFACES

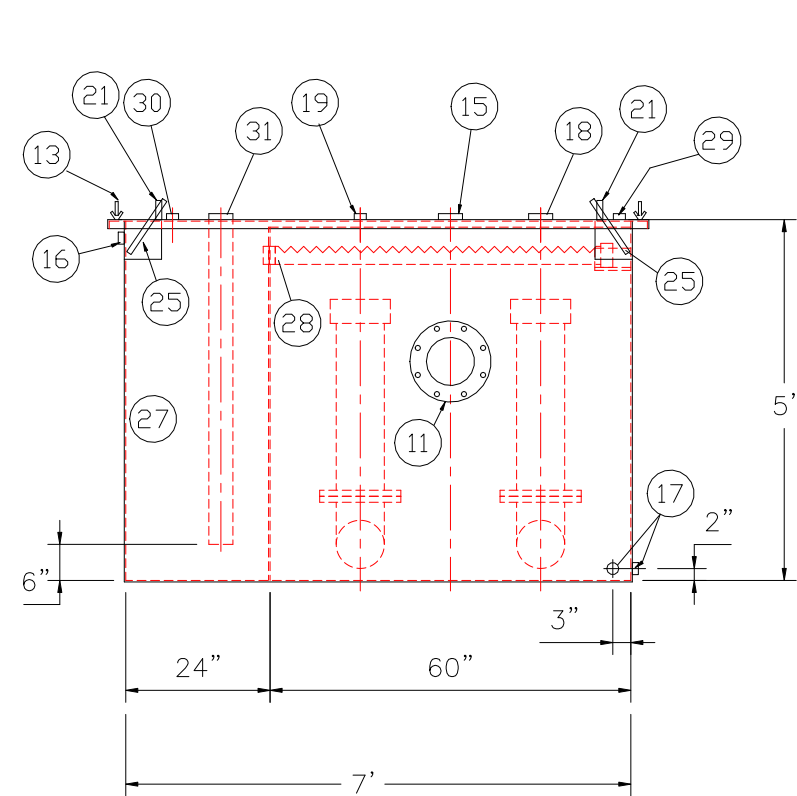
| | | |
|-----------|------------------|------------|
| COATING: | MATERIAL | THICKNESS |
| EXTERIOR- | CHEMPRIME 3001 | (3-6 MILS) |
| | CHEMLINE 3300 | (2-3 MILS) |
| | TOP COAT "WHITE" | |

INTERIOR- CHEMLINE 4200 PW (15 MILS)

CONSTRUCTION:
BUTT FIT AND WELD ALL CORNERS IN & OUT

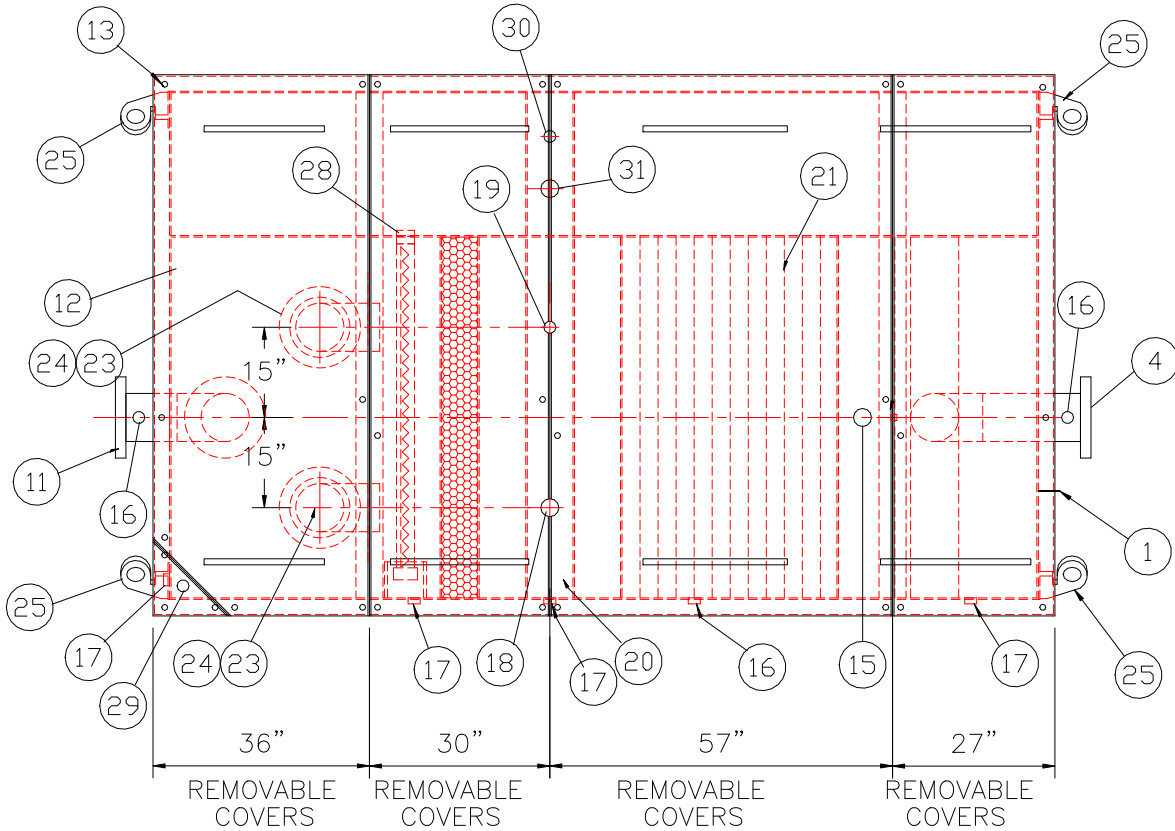
NOTES

- 1. ALL INTERNAL MATERIAL IS 10 GA
- 2. ALL THREADED DRAIN FITTINGS TO HAVE STEEL THREADED PLUGS AND COATED WITH TANK
- 3. ALL OTHER THREADED FITTINGS TO HAVE PVC THREADED PLUGS
- 4. LIFTING LUGS HAVE REINFORCING PLATES

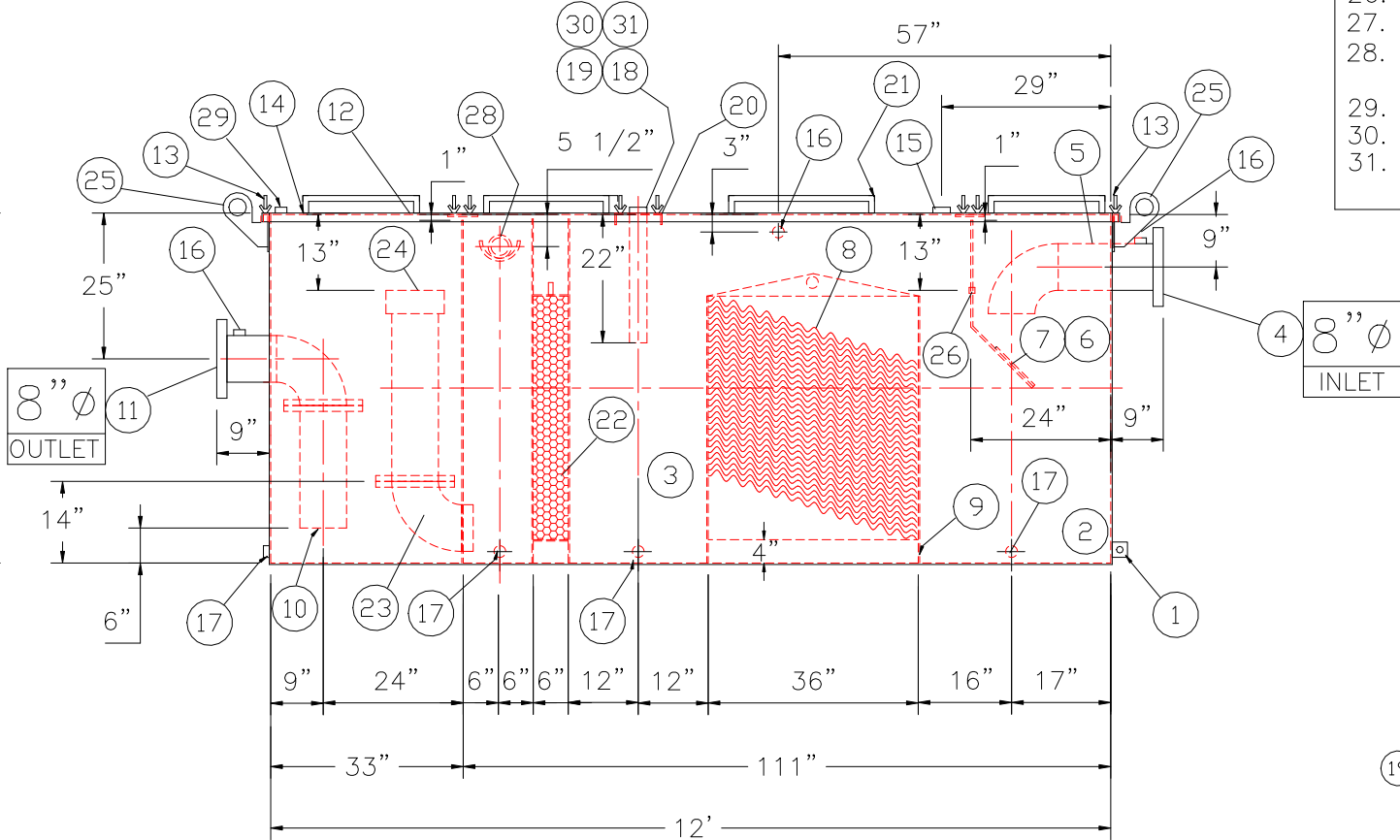


END VIEW

NOTE :
ALL RIGHTS RESERVED. THIS DRAWING OR ANY PART THEREOF MUST NOT BE REPRODUCED IN ANY FORM WITHOUT THE WRITTEN PERMISSION OF HIGHLAND TANK.
HIGHLAND TANK SHALL BE RESPONSIBLE ONLY FOR ITEMS INDICATED ON THIS FABRICATION DRAWING UNLESS OTHERWISE NOTED. CUSTOMER IS RESPONSIBLE FOR VERIFYING CORRECTNESS OF SIZE / LOCATION OF FITTINGS , ACCESSORIES & COATINGS SHOWN ON THIS DRAWING



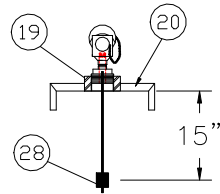
PLAN VIEW



ELEVATION

PROVIDED EQUIPMENT

- 1. 3"x3"x1/4" FLAT W/ 9/16"Ø HOLE DRILLED IN CENTER (GROUNDING LUG)
- 2. SEDIMENT CHAMBER
- 3. OIL WATER SEPARATOR CHAMBER
- 4. 150# RFSO FLANGED INLET
- 5. STEEL INLET ELBOW PIPING
- 6. VELOCITY HEAD DIFFUSION BAFFLE 10GA
- 7. WEAR PLATE (1/4" MATERIAL)
- 8. REMOVABLE PARALLEL CORRUGATED PLATE COALESCER (CORELLA PVC PLATES) 1" PLATE SPACING
- 9. SLUDGE BAFFLE - 10GA
- 10. PVC OUTLET DOWNCOMER PIPE
- 11. 150# RFSO FLANGED OUTLET W/ INTERNAL STEEL ELBOW AND FLANGE
- 12. (4) PIECE COVER W/ 5/8" BOLT HOLES - 7 GA
- 13. NUTS & BOLTS W/ LARGE WING (CORROSION RESISTANT)
- 14. GASKET MATERIAL (FOR EACH REMOVABLE COVER)
- 15. 3"Ø FNPT (CLEAN-OUT)
- 16. 2"Ø FNPT (VENT)
- 17. 2"Ø FNPT (DRAIN)
- 18. 3"Ø FNPT FULL COUPLING WITH 3" INTERNAL PVC PIPE (OIL PUMP OUT IN SEPARATOR CHAMBER)
- 19. 2"Ø FNPT (SEPARATOR CHAMBER INTERFACE LEVEL SENSOR)
- 20. 7GA. CROSSMEMBER FOR OIL PUMP-OUT & LEVEL SENSOR FITTINGS IN SEPARATOR AND OIL HOLDING CHAMBERS
- 21. HANDLES PER H.T. STANDARD
- 22. 6" THICK PETROSCREEN COALESCER MATERIAL
- 23. 8"Ø STEEL ELBOW W/ FLANGE WELDED TO TOP FOR PVC RISER PIPES
- 24. 8"Ø ADJUSTABLE FERNCO COUPLING
- 25. 1/2" THICK LIFTING LUG ANGLED TOWARD CENTER
- 26. 1"Ø FNPT COUPLING W/ PLUG
- 27. OIL HOLDING COMPARTMENT
- 28. 3" FNPT COUPLING WITH SAWTOOTH TYPE PVC OIL SKIMMER & PIPE SUPPORT SHELF
- 29. 2"Ø FNPT (EFFLUENT WATER CHAMBER LEVEL SENSOR)
- 30. 2"Ø FNPT (HIGH LEVEL OIL HOLDING CHAMBER LEVEL SENSOR)
- 31. 3"Ø FNPT FULL COUPLING WITH 3" INTERNAL PVC PIPE (OIL PUMP OUT IN OIL HOLDING CHAMBER)



INTERFACE SENSOR
FLOAT POSITION
HTF-2A-15E

REVISIONS



Highland Tank

U.S. Patent #4,722,800 Canadian Patent # 1,296,263
#6,606,224 # 2,389,065

2000 GALLON OIL WATER SEPARATOR
RECTANGULAR, HTC, S-SERIES

CUSTOMER:

PROJECT:

QUOTE NO:

CHK'D BY:

SCALE:
3/8"=1'-0"

DATE:

DWG. BY:

DWG. NO.:

02000RECSWHTCS