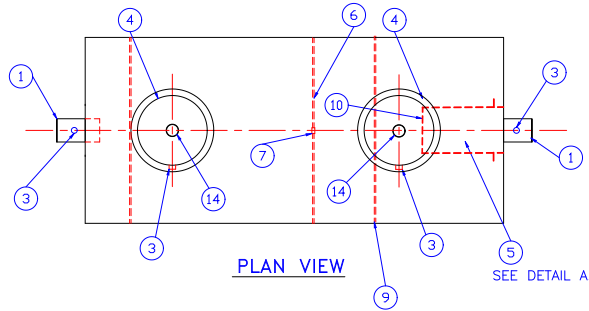


GENERAL SPECIFICATIONS

NO. REQ'D:
CAPACITY: 2,000 GALLONS
TYPE: UNDERGROUND, SINGLE WALL, HIGHGUARD
DOUBLE BASIN PASSIVE GREASE INTERCEPTOR
MATERIAL: MILD CARBON STEEL
GREASE CAPACITY: 9892 LBS.

GAUGE:
SHELL- 7GA
HEADS- 7GA
SURFACE PREP:
SSPC NO.6 BLAST ALL EXTERIOR SURFACES

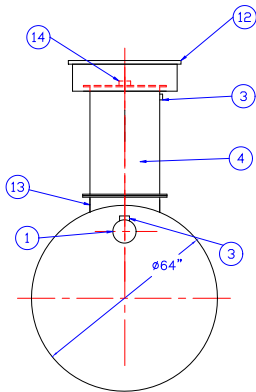
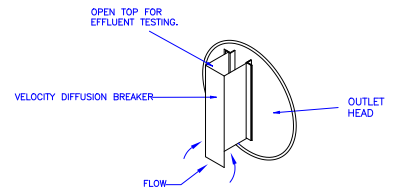
COATING:	MATERIAL	THICKNESS
EXTERIOR-	POLYURETHANE	(75 MILS)
INTERIOR-	POLYURETHANE	(15 MILS)



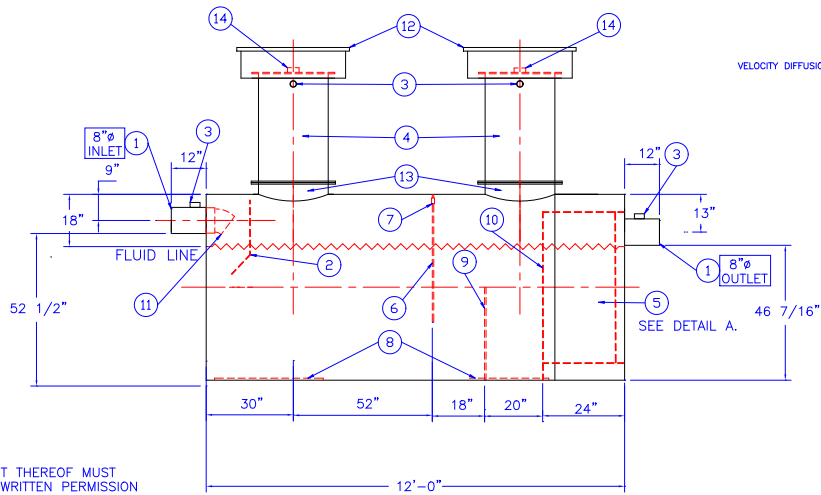
PROVIDED EQUIPMENT

1. 8"Ø PIPE STUB 6" LONG W/ 2"ØNPT FOR VENT
2. INLET DIFFUSION BAFFLE W/ WEARPLATE
3. 2"Ø NPT FITTING FOR VENT
4. 24" Ø MANWAY EXTENSION(SHIPED LOOSE)
5. STEEL OUTLET DOWNCOMER BAFFLE W/ OPEN TOP FOR EFFLUENT SAMPLING.
6. GREASE DAM.
7. 2"Ø OPENING FOR VENT
8. 1/4" STRIKER PLATES
9. SLUDGE BAFFLE (7GA.)
10. VELOCITY DIFFUSION BREAKER
11. 8"Ø 45° DIFFUSION ELBOW
12. 36"Ø H-20 RATED GRADE MANWAY.
13. 24"Ø MANWAY W/ BOLT ON EXTENSION
14. 4" NPT GAUGE FITTING

DETAIL A.



END VIEW



ELEVATION

NOTE :
ALL RIGHTS RESERVED. THIS DRAWING OR ANY PART THEREOF MUST NOT BE REPRODUCED IN ANY FORM WITHOUT THE WRITTEN PERMISSION OF HIGHLAND TANK.
HIGHLAND TANK SHALL BE RESPONSIBLE ONLY FOR ITEMS INDICATED ON THIS FABRICATION DRAWING UNLESS OTHERWISE NOTED. CUSTOMER IS RESPONSIBLE FOR VERIFYING CORRECTNESS OF SIZE / LOCATION OF FITTINGS , ACCESSORIES & COATINGS SHOWN ON THIS DRAWING
(2)-9M (2)-10Z

REVISIONS



LOWE ENGINEERING CO.
A HIGHLAND TANK COMPANY

2,250 GALLON DOUBLE BASIN
PASSIVE GREASE INTERCEPTOR

CUSTOMER:

PROJECT:

QUOTE NO:

SCALE:	DATE:	DWG. BY:	CHK'D BY:	DWG. NO.:
3/8"=1'-0"	02/02/06	CLO		022500BSWPGI