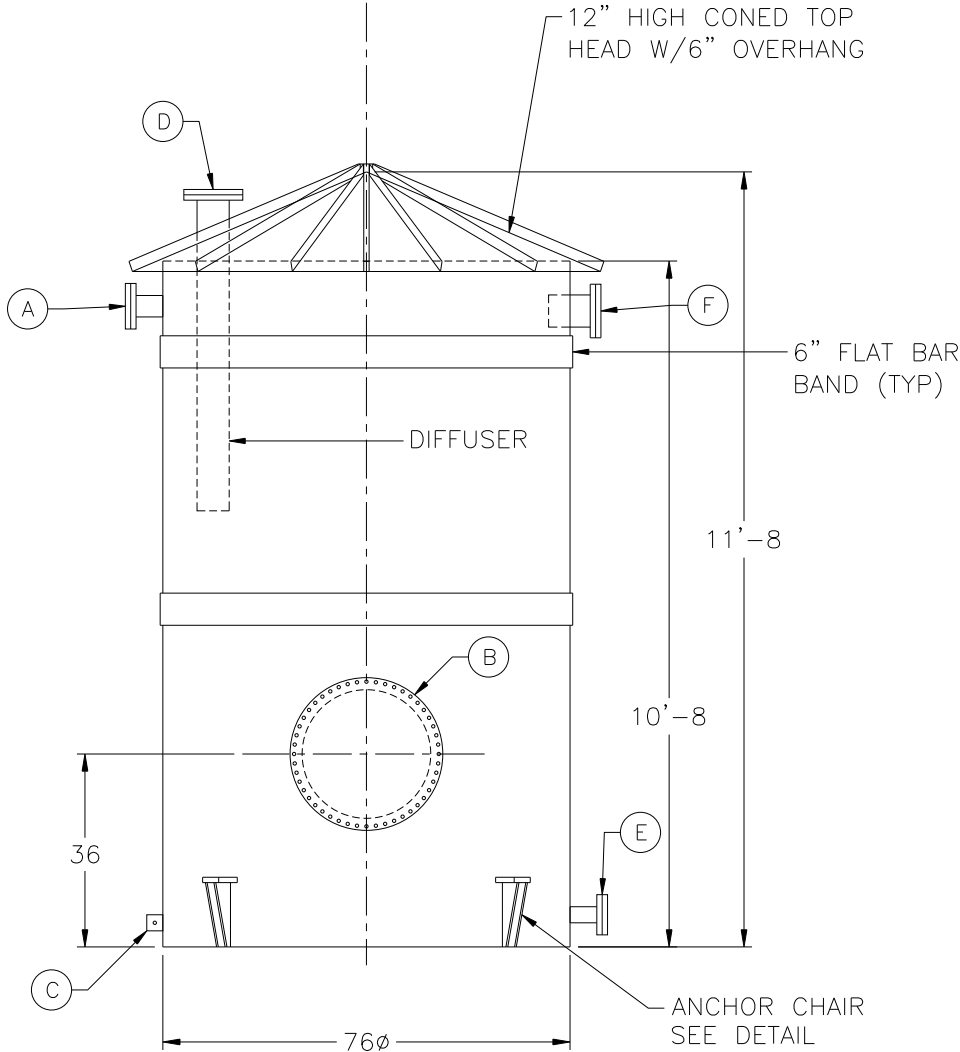
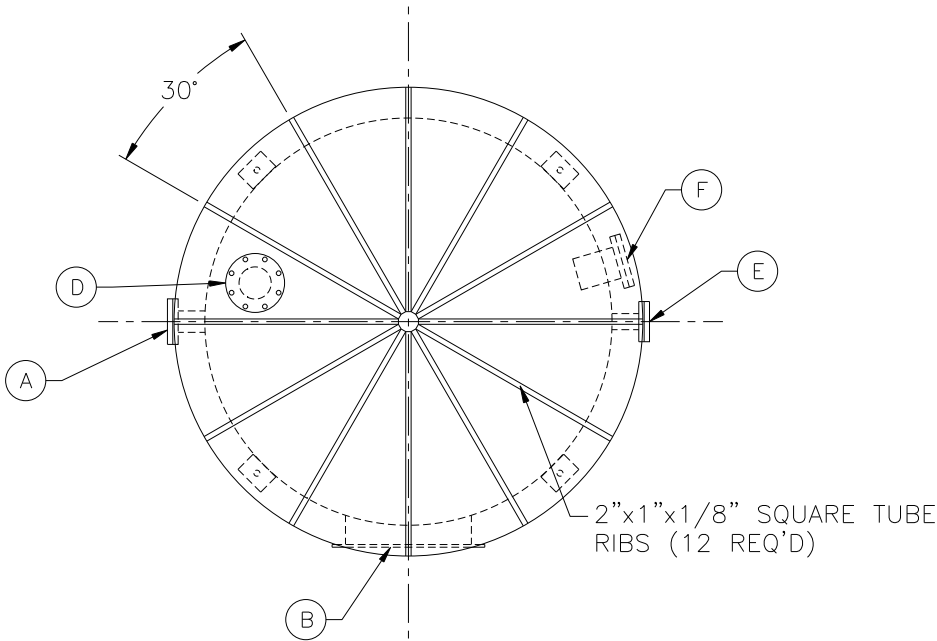


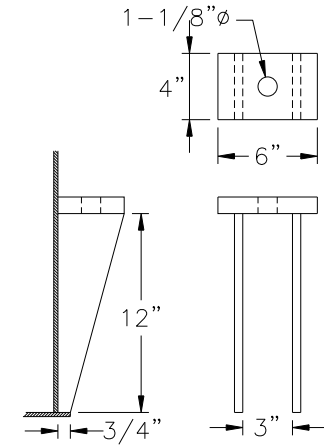
NOTE: ALL RIGHTS RESERVED. THIS DRAWING MUST NOT BE REPRODUCED IN ANY FORM WITHOUT THE WRITTEN PERMISSION OF HIGHLAND TANK. HIGHLAND TANK SHALL BE RESPONSIBLE ONLY FOR ITEMS INDICATED ON THIS FABRICATION DRAWING UNLESS OTHERWISE NOTED. CUSTOMER IS RESPONSIBLE FOR VERIFYING CORRECTNESS OF SIZE AND LOCATION OF FITTINGS, ACCESSORIES, AND COATINGS SHOWN ON THIS DRAWING.

TOUCH UP OF FINISHED PAINT IS REQUIRED BY INSTALLATION CONTRACTOR. TOUCH UP PAINT SHIPPED WITH TANK.

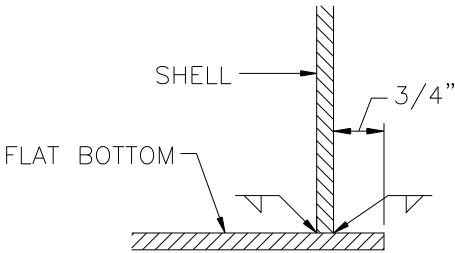
- NOTES
1. SEE PLAN VIEW FOR TRUE ORIENTATION AND LOCATION OF FITTING
  2. LIFTING LUGS FOR UNLOADING UNIT & STANDING UNIT UPRIGHT TO BE PLACED AS NEEDED BY FABRICATION SHOP
  3. A 3x3x1/4" STEEL GROUNDING LUG WITH A 5/8"Ø HOLE IN CENTER TO BE PLACED ON SHELL AT BOTTOM OF TANK IN LINE WITH LIFTING LUGS



DESIGN DATA	
CAPACITY	– 2,500 GALLON
TYPE	– SINGLE WALL ABOVEGROUND VERTICAL
NO. REQ.	–
OPERATING PRESSURE	– ATMOSPHERIC
SPECIFIC GRAVITY	= 1.0
TANK MATERIAL	– MILD CARBON STEEL
THICKNESS – TOP HEAD:	7 GA CONE WITH 2"x1" SQ. TUBE REINFORCEMENT
THICKNESS – BOTTOM HEAD:	1/4" FLAT
THICKNESS – SHELL:	1/4"
CONSTRUCTION	– LAP WELD INSIDE & OUTSIDE
TANK TEST	– 2 PSIG
INT. FINISH	– SSPC-SP 10 BLAST HighDRO®-LINER PLUS POLYURETHANE (15 MILS)
EXT. FINISH	– SSPC-SP 6 BLAST EXTERIOR OF BOTTOM HEAD TO BE COATED W/ 25 MILS POLYURETHANE PRIOR TO TOP COATS ENTIRE EXTERIOR: (2) COATS WHITE URETHANE
LABEL –	
LEGEND	
A	VENT – 4" 150# RFSO FLANGE WITH BLIND
B	24" X 1/4" PLATE TIGHT BOLT MANWAY WITH 1/8" THICK NEO-CORK GASKET
C	GROUNDING LUG WITH 5/8" HOLE
D	INLET – 4" 150# RFSO FLANGE WITH BLIND
E	OUTLET – 3" 150# RFSO FLANGE WITH BLIND
F	OVERFLOW – 4" 150# RFSO FLANGE W/ BLIND



ANCHOR CHAIR DETAIL



BOTTOM JOINT DETAIL

△					
		<b>Highland Tank®</b>			
HighDRO® WATER STORAGE TANKS 2,500 GALLON RAINWATER COLLECTION TANK					
CUSTOMER:					
PROJECT:					
QUOTE NO:		CHK'D BY:			
SCALE:	DATE:	DWG. BY:	DWG. NO:		
NTS	9/3/10	MGS	02500AVSWHDCST76		