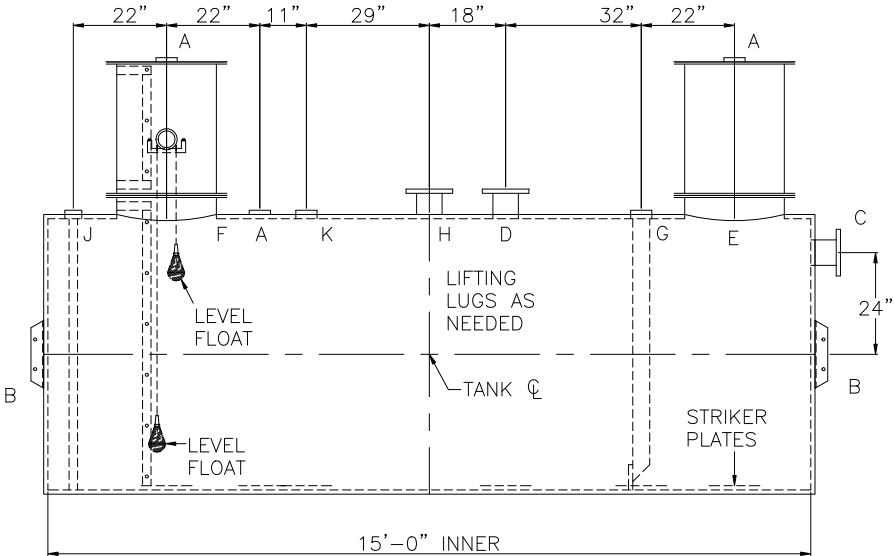
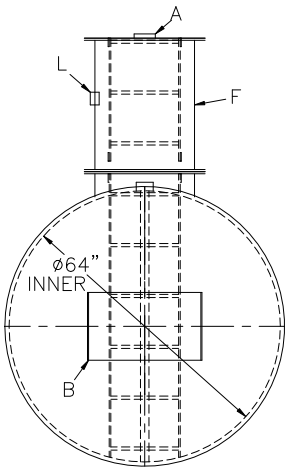
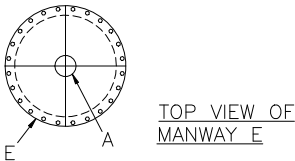
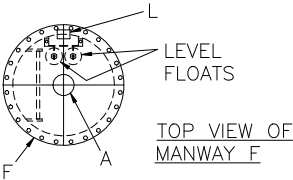


NOTE: ALL RIGHTS RESERVED. THIS DRAWING MUST NOT BE REPRODUCED IN ANY FORM WITHOUT THE WRITTEN PERMISSION OF HIGHLAND TANK. HIGHLAND TANK SHALL BE RESPONSIBLE ONLY FOR ITEMS INDICATED ON THIS FABRICATION DRAWING UNLESS OTHERWISE NOTED. CUSTOMER IS RESPONSIBLE FOR VERIFYING CORRECTNESS OF SIZE AND LOCATION OF FITTINGS, ACCESSORIES, AND COATINGS SHOWN ON THIS DRAWING.

- NOTES:
- 1) THE HIGHGUARD TANK IS NOT APPROVED FOR THE STORAGE OF HEATED PRODUCTS.
 - 2) 15,000 VOLT SPARK TEST PROVIDED AT FACTORY.
 - 3) SHOP TO INSTALL 1/4"x12"x12" STRIKER PLATES, ROLLED AND SEAL WELD TO THE TANK.



DESIGN DATA

| |
|---|
| CAPACITY - 2,500 GALLONS |
| TYPE - DOUBLE WALL, WASTEWATER STORAGE TANK |
| NO. REQ. - - |
| OPERATING PRESSURE - ATMOSPHERIC |
| TANK MATERIAL - MILD CARBON STEEL |
| THICKNESS INNER - HEADS: 7 GA, SHELL: 7 GA |
| THICKNESS OUTER - HEADS: 10 GA, SHELL: 10 GA |
| *GA THK. BASED ON 60" MAX. BURIAL DEPTH |
| CONSTRUCTION - |
| INNER TANK - FLAT FLANGED, HEADS LAP WELD INTERIOR AND EXTERIOR |
| OUTER TANK - LAP WELD OUTSIDE ONLY |
| TANK TEST - INNER - 5 PSIG |
| OUTER - 2 PSIG AND FULL VACUUM |
| INT. FINISH - SP10 BLAST, HighDRO®-LINER PLUS |
| EXT. FINISH - SP6 BLAST, 75 MILS POLYURETHANE |
| LABEL - HIGHGUARD |

LEGEND

| | | | |
|---|--|---|--|
| A | 4" FITTING | G | 4" FITTING WITH 4" SCH 40 DROP PIPE |
| B | HTM SPIN BRK'T - MFG USE ONLY - NOT TO BE USED FOR FIELD INSTALLATION | H | FLANGE - SECONDARY VENT |
| C | FLANGE - LOCATE ON VERTICAL CL - INLET | J | 2" INTERNAL MONITOR PIPE |
| D | FLANGE - PRIMARY VENT | K | 4" FNPT FITTING-SPARE |
| E | 24" x 1/4" PLATE TIGHT BOLT MANWAY WITH 3/8" THICK NEO-CORK GASKET AND BOLT ON EXTENSION - EXTENSION SHIPS LOOSE FOR INSTALLATION ON SITE BY OTHERS | L | 2" FULL COUPLING (ELECTRICAL CONNECTION) |
| F | 24" x 1/4" PLATE TIGHT BOLT MANWAY WITH 3/8" THICK NEO-CORK GASKET AND BOLT ON EXTENSION - EXTENSION SHIPS LOOSE FOR INSTALLATION ON SITE BY OTHERS, ACCESS LADDER INCLUDED. | | |



Highland Tank

UNLESS NOTED, TOLERANCES ARE +/- 1"

HighDRO® WATER STORAGE TANK

2,500 GAL 64"Ø DOUBLE-WALL UNDERGROUND FOR WASTEWATER STORAGE

CUSTOMER:

PROJECT:

QUOTE NO:

SCALE: 3/8"=1'-0"

DATE:

DWG. BY:

CHK'D BY:

DWG. NO.: 2500HGDWHDWWST64