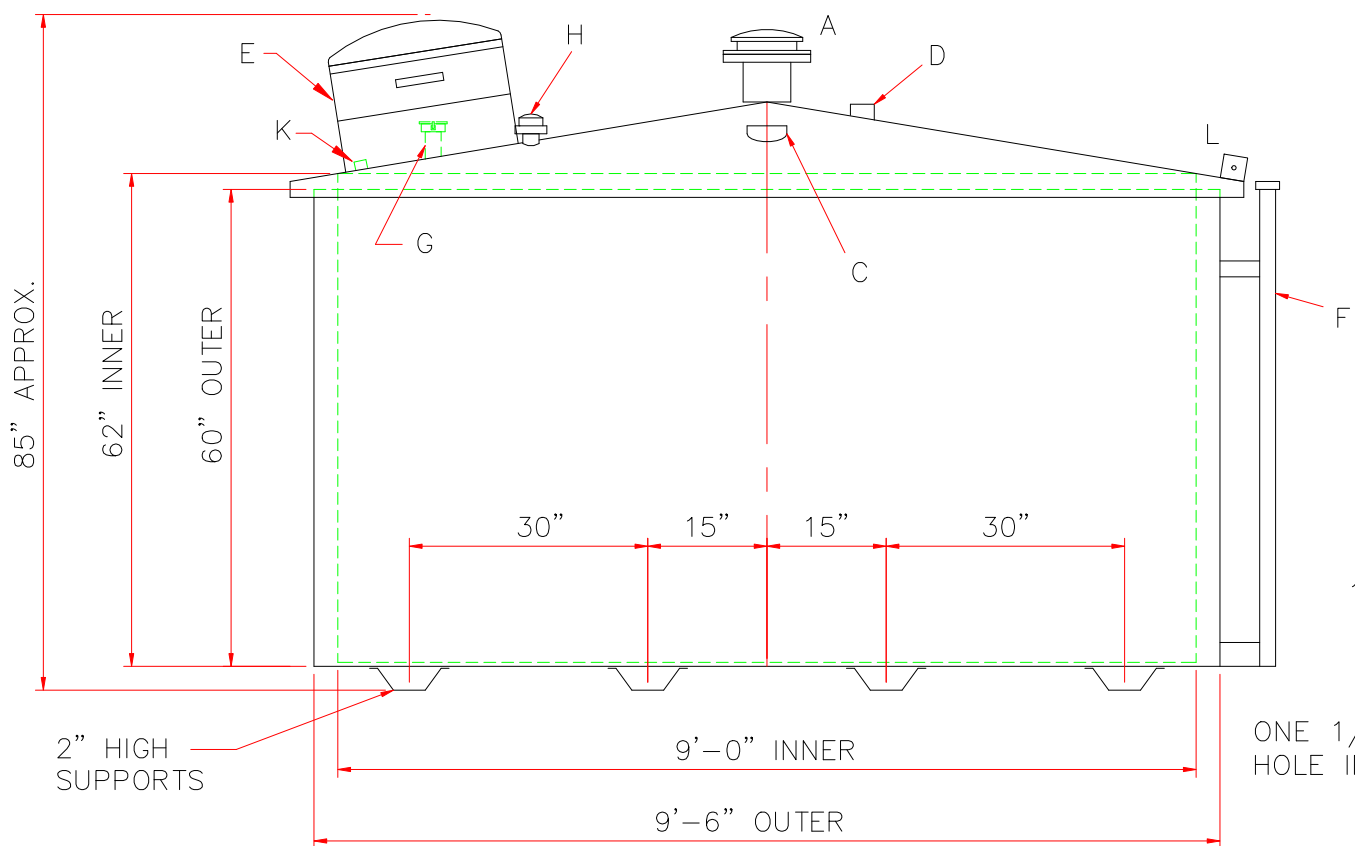
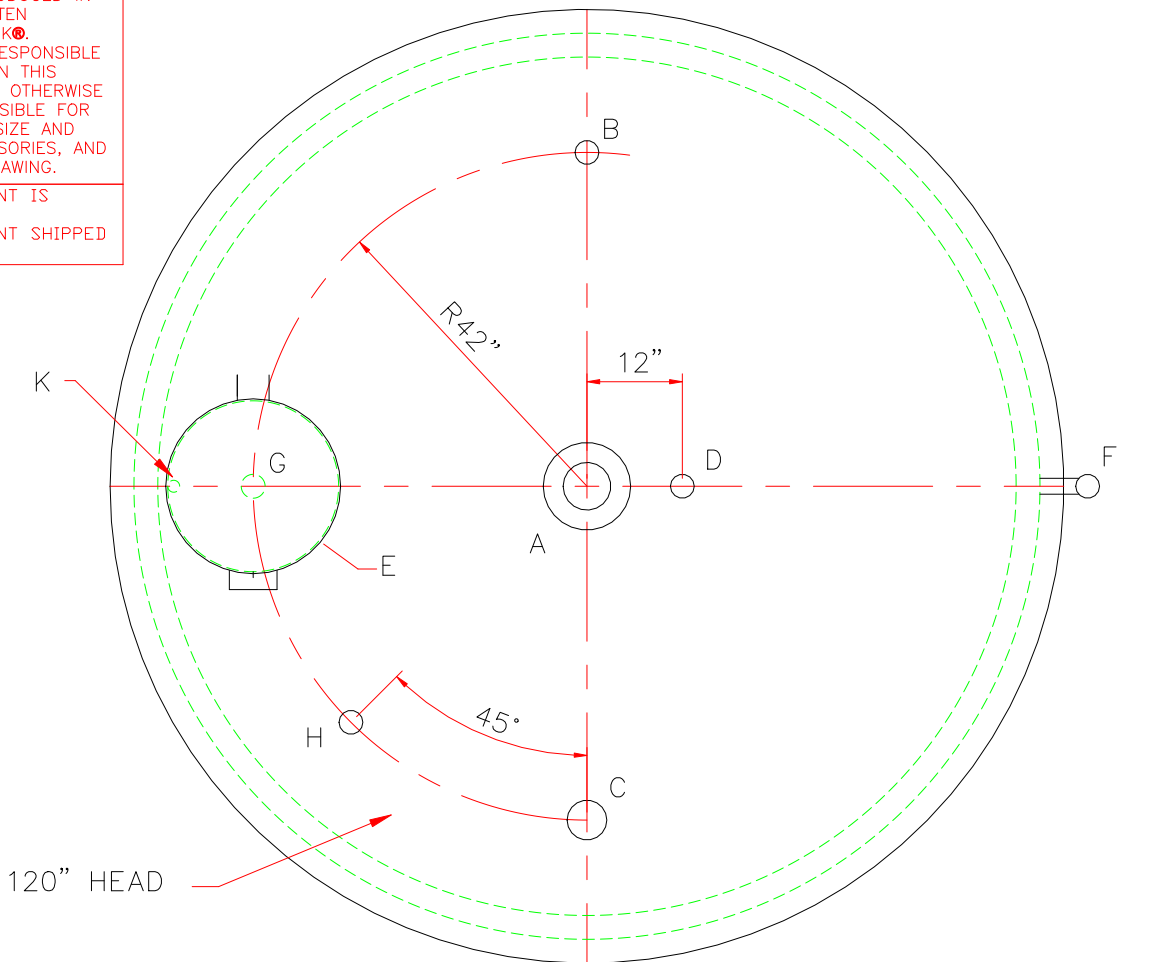
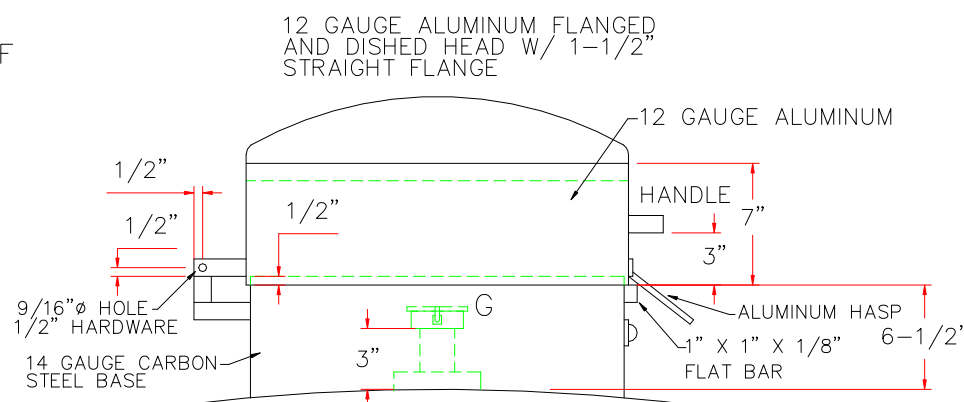
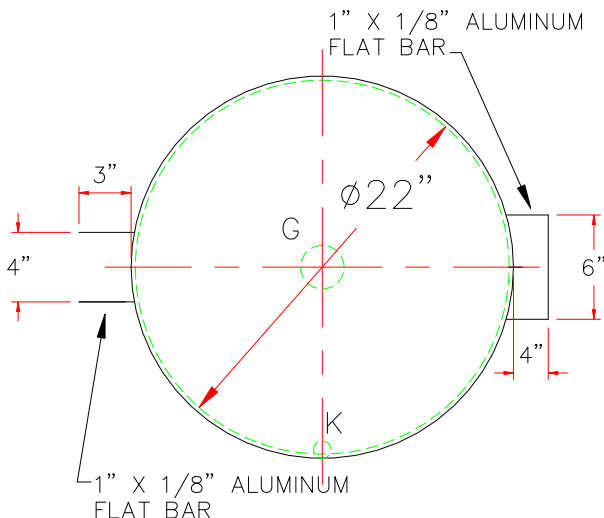


NOTE: ALL RIGHTS RESERVED. THIS DRAWING MUST NOT BE REPRODUCED IN ANY FORM WITHOUT THE WRITTEN PERMISSION OF HIGHLAND TANK. HIGHLAND TANK SHALL BE RESPONSIBLE ONLY FOR ITEMS INDICATED ON THIS FABRICATION DRAWING UNLESS OTHERWISE NOTED. CUSTOMER IS RESPONSIBLE FOR VERIFYING CORRECTNESS OF SIZE AND LOCATION OF FITTINGS, ACCESSORIES, AND COATINGS SHOWN ON THIS DRAWING.

TOUCH UP OF FINISHED PAINT IS REQUIRED BY INSTALLATION CONTRACTOR. TOUCH UP PAINT SHIPPED WITH TANK.



DESIGN DATA		LEGEND	
CAPACITY –2,500 GALLONS		A	6" FFSO 150# FLANGE – PRIMARY EMERGENCY VENT USE ONLY
NO. REQ. – –		B	2" HALF COUPLING (SUCTION)
OPERATING PRESSURE –ATMOSPHERIC		C	4" COUPLING (SPARE)
SPECIFIC GRAVITY = 1.0		D	2" HALF COUPLING (NORMAL VENT)
TANK MATERIAL – MILD CARBON STEEL THICKNESS – TOP: 1/4" FLANGED CONE OR STD. FLANGED & DISHD THICKNESS – BALANCE OF TANK– 7 GA		E	22"Ø CHAMBER WITH HINGED ALUMINUM LID SEE DETAIL E APPROXIMATE CHAMBER CAPACITY 7 GAL ACCESS TO FILL
CONSTRUCTION – TANK – LAP WELD OUTSIDE ONLY (INNER TANK IS NOT ATTACHED TO OUTER TUB)		F	2" MONITOR PIPE
CONSTRUCTION– TUB – LAP WELD OUTSIDE ONLY		G	4" HALF COUPLING WITH 4" x 2" DOUBLE TAPPED BUSHING W/2" CLOSE NIPPLE & 2" LOCKING FILL CAP
TANK TEST – TANK ONLY – 5 PSIG		H	2" HALF COUPLING (GAUGE)
TUB TEST – TUB ONLY – WATERTIGHT		J	–
FINISH – TUB – INSIDE AND OUT – SHOP PRIMER		K	1/2" FITTING w/PLUG – PLACE INSIDE CHAMBER AS CLOSE AS POSSIBLE TO EDGE – CHAMBER DRAIN
FINISH – TANK – INTERIOR – NONE		L	3" x 3" PLATE w/ 1/2"Ø HOLE (MIN.) HOLE ON CENTER (GROUNDING LUG – ONE REQ'D ON THE LID), HTM SHOP TO DRILL ONE 1/2"Ø IN THE TANK SUPPORT.
FINISH – TANK – EXTERIOR – SAME AS TUB			
LABEL – UL 142 – APPLY LABEL ON TOP OF TANK			
TANK SUPPORT – 10 GA x 4" WIDE x 2" DEEP PRESSBRAKE "U" PATTERN			



NOTE: DO NOT CUT HOLE IN TANK HEAD FOR CHAMBER

ONE 1/2"Ø GROUNDING HOLE IN TANK SUPPORT

DETAIL E

- SHIP LOOSE: (INSTALLATION BY OTHERS)
- (1) GAUGE
 - (1) 2"Ø x 96" LONG GALVANIZED PIPE (T.B.E.)
 - (1) 2"Ø MUSHROOM VENT
 - (1) 6" EMERGENCY VENT

Highland Tank

UNLESS NOTED, TOLERANCES ARE +/- 1"

2,500 GAL PETRO HOPPER

CUSTOMER:

PROJECT:

QUOTE NO:

SCALE: 1/2"=1'-0"

DATE:

DWG. BY:

CHK'D BY:

DWG. NO:

2500PH