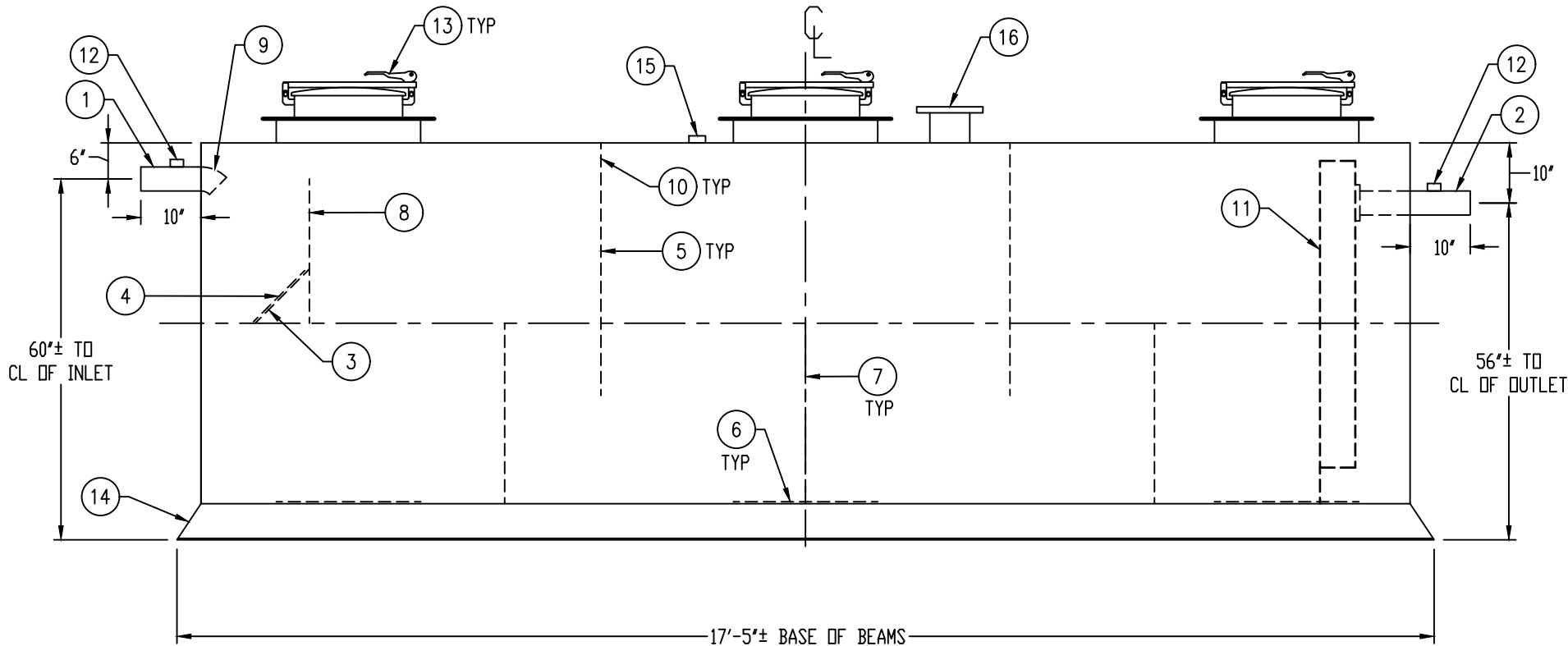
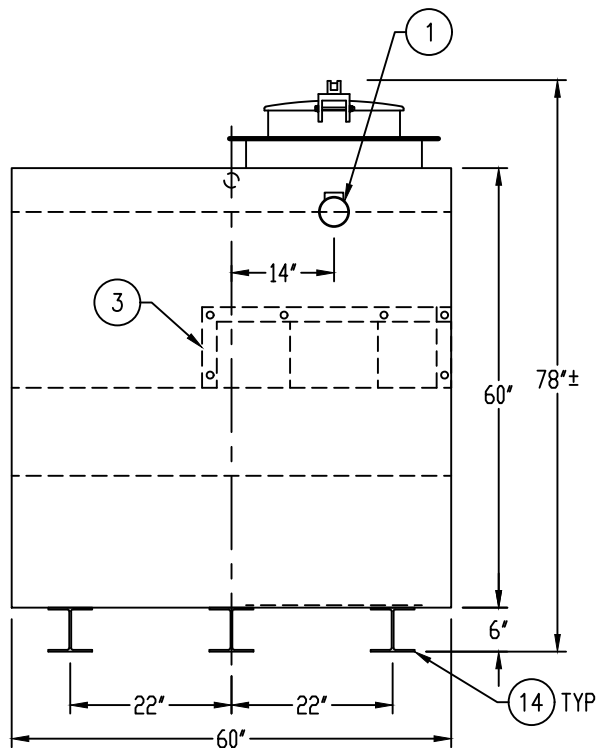


NOTE:
ALL RIGHTS RESERVED. THIS DRAWING, OR ANY PART THEREOF, MUST NOT
BE REPRODUCED IN ANY FORM WITHOUT WRITTEN PERMISSION FROM
HIGHLAND TANK. UNLESS OTHERWISE NOTED, HIGHLAND TANK SHALL BE
RESPONSIBLE ONLY FOR ITEMS INDICATED IN THIS FABRICATION DRAWING.
THE CUSTOMER IS RESPONSIBLE FOR VERIFYING THE CORRECTNESS OF
THE TYPE, SIZE, AND LOCATION OF ALL FITTINGS, ACCESSORIES, AND
COATINGS SHOWN ON THIS DRAWING.



GENERAL SPECIFICATIONS

QUANTITY: ONE (1)
MODEL: PGI-2500-3 AR
CAPACITY: 2,500 GALLONS
TYPE: SINGLE WALL, ABOVEGROUND
MATERIAL: 7 GA CARBON STEEL WITH 1/4" BOTTOM
LAP FIT AND WELD INTERIOR AND EXTERIOR SEAMS
SURFACE PREP: SSPC-SP 10 BLAST INTERIOR SURFACES
SSPC-SP 6 BLAST EXTERIOR SURFACES
EXT. COATING: WHITE URETHANE - 3-5 MILS
INT. COATING: CHEMLINE 4200 PW (15 MILS DFT)
OPERATING PRESSURE: ATMOSPHERIC
GREASE HOLDING CAPACITY: 6,348 LBS

PROVIDED EQUIPMENT

1. 4"Ø SCH 40 PIPE STUB - INLET
2. 4"Ø SCH 40 PIPE STUB - OUTLET
3. REMOVABLE DIFFUSION PLATE - 7 GA
4. 12" x 12" WEAR PLATE - 1/4"
5. GREASE DAM - 7 GA
6. STRIKER PLATE
7. SLUDGE BAFFLE - 7 GA
8. UNDERFLOW BAFFLE - 7 GA
9. 4"Ø 45° DIFFUSION ELBOW
10. 2"Ø OPENING FOR AIR CIRCULATION
11. STEEL OUTLET DOWNCOMER BAFFLE WITH OPEN TOP
12. 2" HC - VENT
13. 24"Ø MANWAY WITH 18" EASY-ACCESS HATCH
14. (3) W6x15 BEAM RUNNER WITH (2) 1-1/8" HOLES AT EACH TAPERED END FOR ANCHORING
15. 2" HC - NORMAL TANK VENT
16. 6"Ø-150# FFSSO FLANGE FOR EMERGENCY VENT

THIS DRAWING IS SUBJECT TO CHANGE AT THE DISCRETION
OF THE MANUFACTURER. CONTACT HIGHLAND TANK FOR
THE MOST UP-TO-DATE INFORMATION AND DRAWINGS OF
OUR PRODUCTS.



Highland Tank®

PASSIVE GREASE INTERCEPTOR

PGI-2500-3 AR

CUSTOMER:

PROJECT:

QUOTE NO.:

ORDER:

SCALE:

DATE:

DWG. BY:

DWG. NO.:

NTS

10/31/23

MGS

PGI-2500-3 AR

DIMENSION TOLERANCE: ± 1"