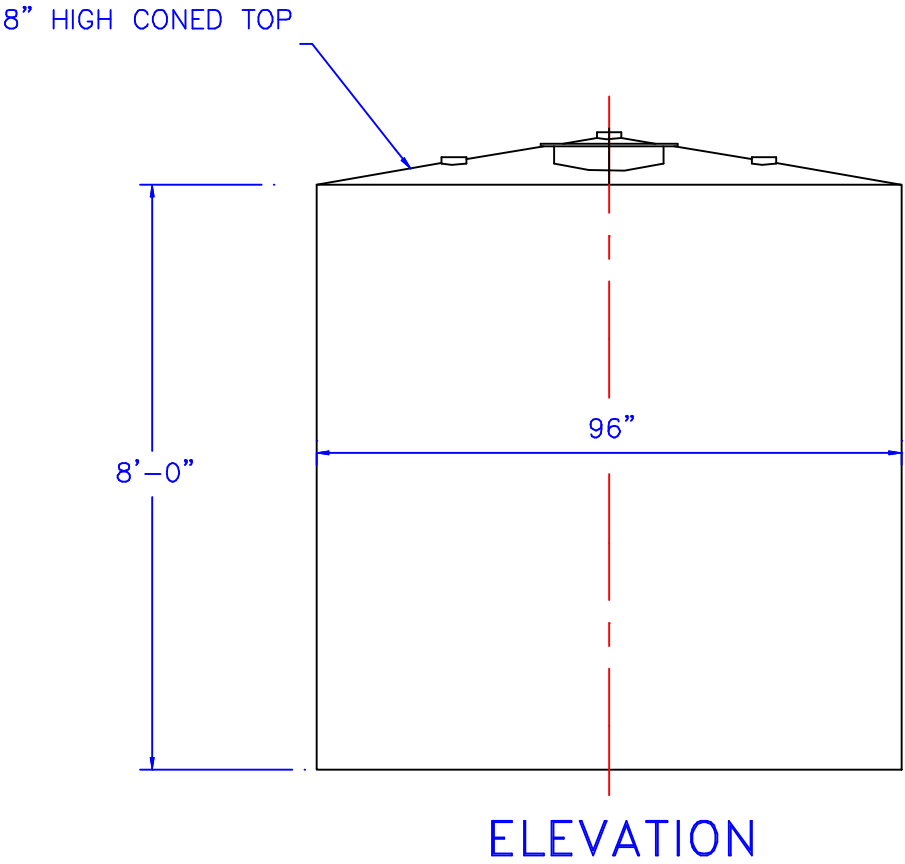
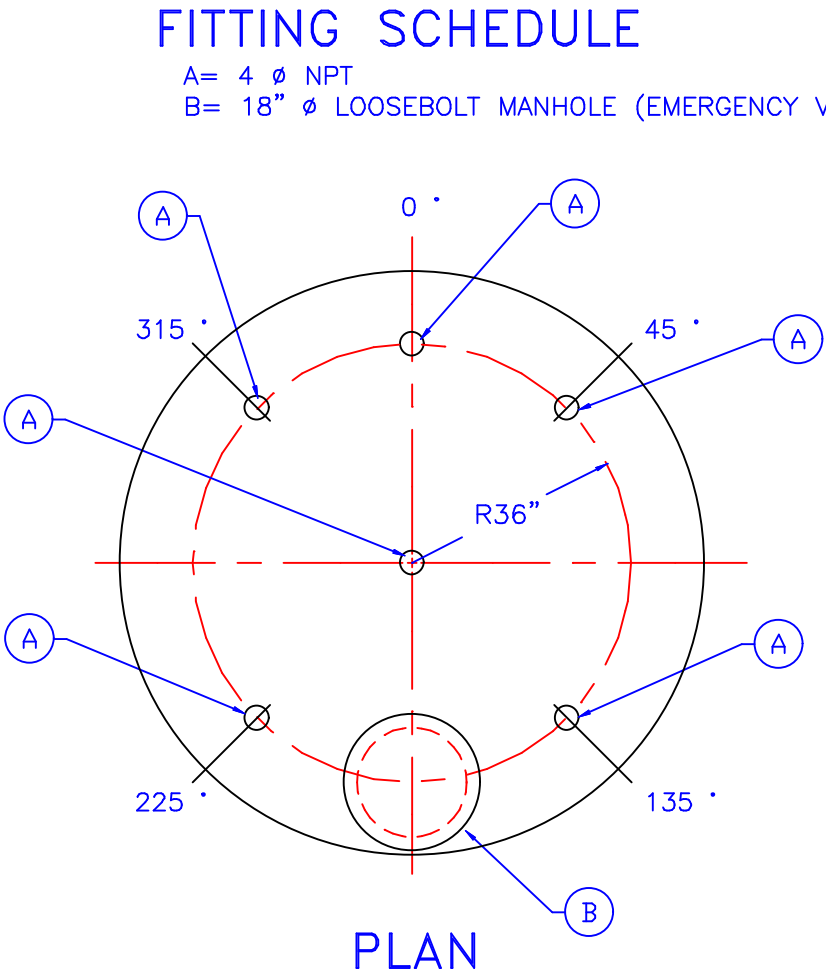


NOTE :  
ALL RIGHTS RESERVED. THIS DRAWING OR ANY PART THEREOF MUST NOT BE REPRODUCED IN ANY FORM WITHOUT THE WRITTEN PERMISSION OF HIGHLAND TANK.  
HIGHLAND TANK SHALL BE RESPONSIBLE ONLY FOR ITEMS INDICATED ON THIS FABRICATION DRAWING UNLESS OTHERWISE NOTED. CUSTOMER IS RESPONSIBLE FOR VERIFYING CORRECTNESS OF SIZE / LOCATION OF FITTINGS , ACCESSORIES & COATINGS SHOWN ON THIS DRAWING  
NOTE :  
SEE PLAN VIEW FOR TRUE ORIENTATION & LOCATION OF FITTINGS  
NOTE :  
LIFTING LUGS FOR UNLOADING UNIT & STANDING UNIT UPRIGHT TO BE PLACED AS NEEDED BY FABRICATION SHOP



**GENERAL NOTES**

CAPACITY : 3000 GALLONS  
TYPE : SINGLE WALL, ABOVEGROUND, VERTICAL  
NO. REQ. :  
MATERIAL : MILD CARBON STEEL  
TEST : 1.5 TO 2.5 P.S.I.  
MIN. GAUGE OR THICKNESS (PER U.L. 142):  
BOTTOM HEAD : 1/4"  
SHELL : 1/4"  
TOP HEAD : 7 GA. CONE  
PAINT :  
INTERIOR : NONE  
EXTERIOR : RED PRIMER  
CONSTRUCTION : FLAT BOTTOM HEAD, CONED TOP HEAD.  
LAP WELD ALL EXTERIOR SEAMS EXCEPT  
BUTT WELD ALL LONGITUDINAL SEAMS  
APPROVED LABELS : U.L. 142

REVISIONS			
		<b>Highland Tank</b>	
3000 GALLON ABOVEGROUND VERTICAL SINGLE WALL			
CUSTOMER:			
PROJECT:			
QUOTE NO:		CHK'D BY:	
SCALE: 3/8 " = 1'-0"	DATE: 5-19-99	DWG. BY:	DWG. NO.: 3K AV SW