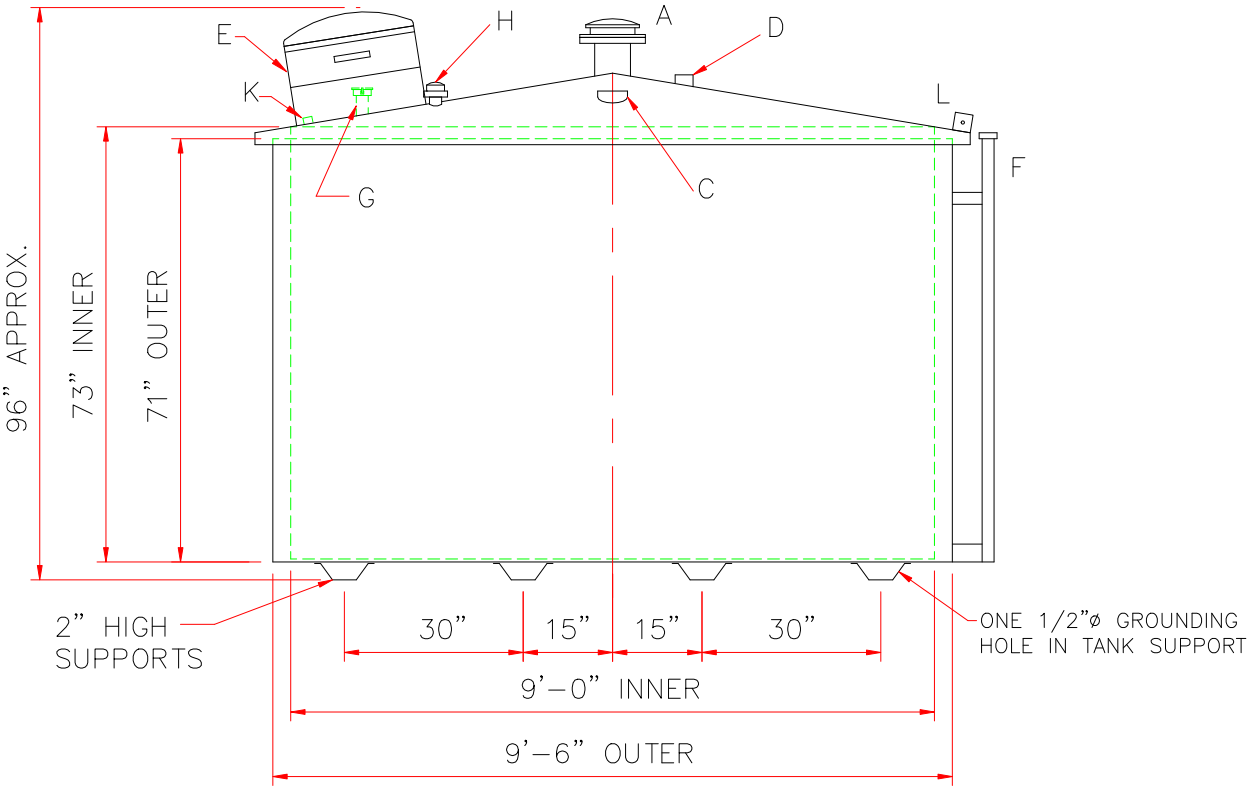
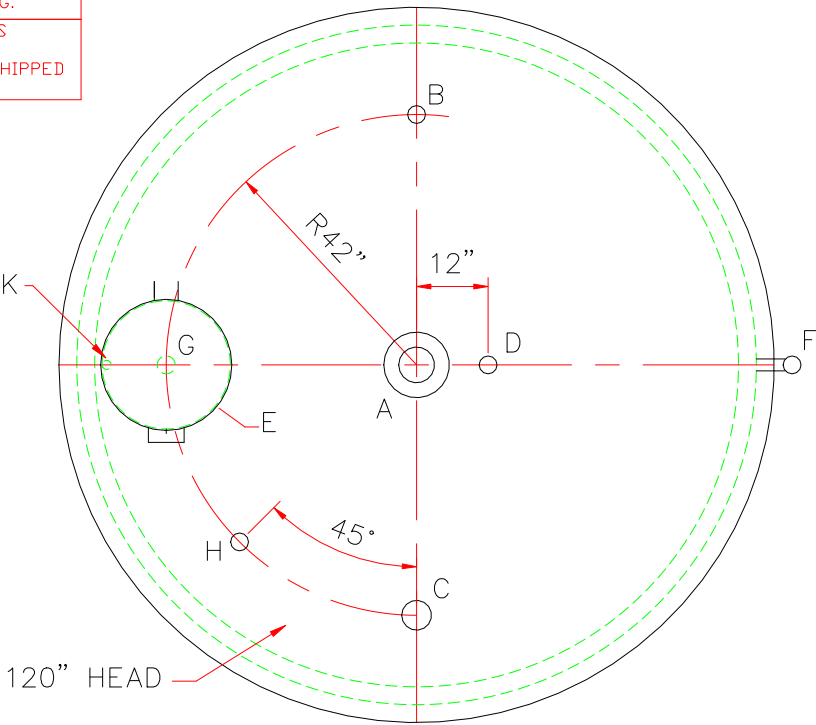
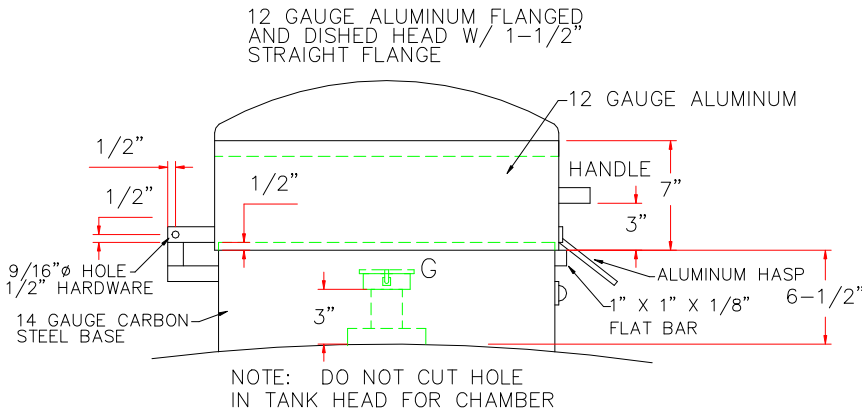
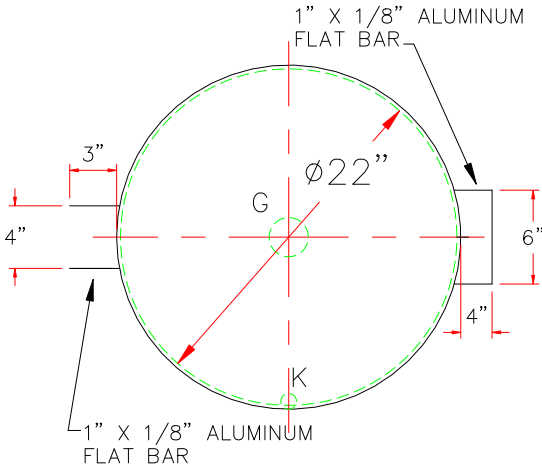


NOTE: ALL RIGHTS RESERVED. THIS DRAWING MUST NOT BE REPRODUCED IN ANY FORM WITHOUT THE WRITTEN PERMISSION OF HIGHLAND TANK®. HIGHLAND TANK® SHALL BE RESPONSIBLE ONLY FOR ITEMS INDICATED ON THIS FABRICATION DRAWING UNLESS OTHERWISE NOTED. CUSTOMER IS RESPONSIBLE FOR VERIFYING CORRECTNESS OF SIZE AND LOCATION OF FITTINGS, ACCESSORIES, AND COATINGS SHOWN ON THIS DRAWING.

TOUCH UP OF FINISHED PAINT IS REQUIRED BY INSTALLATION CONTRACTOR. TOUCH UP PAINT SHIPPED WITH TANK.



DESIGN DATA		LEGEND	
CAPACITY –3,000 GALLONS		A	6" FFSO 150# FLANGE – PRIMARY EMERGENCY VENT USE ONLY
NO. REQ. – –		B	2" HALF COUPLING (SUCTION)
OPERATING PRESSURE –ATMOSPHERIC		C	4" COUPLING (SPARE)
SPECIFIC GRAVITY = 1.0		D	2" HALF COUPLING (NORMAL VENT)
TANK MATERIAL – MILD CARBON STEEL		E	22"Ø CHAMBER WITH HINGED ALUMINUM LID SEE DETAIL E APPROXIMATE CHAMBER CAPACITY 7 GAL ACCESS TO FILL
THICKNESS – TOP: 1/4" FLANGED CONE OR STD. FLANGED & DISHED		F	2" MONITOR PIPE
THICKNESS – BALANCE OF TANK– 7 GA		G	4" HALF COUPLING WITH 4" x 2" DOUBLE TAPPED BUSHING W/2" CLOSE NIPPLE & 2" LOCKING FILL CAP
CONSTRUCTION – TANK – LAP WELD OUTSIDE ONLY (INNER TANK IS NOT ATTACHED TO OUTER TUB)		H	2" HALF COUPLING (GAUGE)
CONSTRUCTION– TUB – LAP WELD OUTSIDE ONLY		J	–
TANK TEST – TANK ONLY – 5 PSIG		K	1/2" FITTING w/PLUG – PLACE INSIDE CHAMBER AS CLOSE AS POSSIBLE TO EDGE – CHAMBER DRAIN
TUB TEST – TUB ONLY – WATERTIGHT		L	3" x 3" PLATE w/ 1/2"Ø HOLE (MIN.) HOLE ON CENTER (GROUNDING LUG – ONE REQ'D ON THE LID), HTM SHOP TO DRILL ONE 1/2"Ø IN THE TANK SUPPORT.
FINISH – TUB – INSIDE AND OUT – SHOP PRIMER			
FINISH – TANK – INTERIOR – NONE			
FINISH – TANK – EXTERIOR – SAME AS TUB			
LABEL – UL 142 – APPLY LABEL ON TOP OF TANK			
TANK SUPPORT – 10 GA x 4" WIDE x 2" DEEP PRESSBRAKE "U" PATTERN			



DETAIL E

- SHIP LOOSE: (INSTALLATION BY OTHERS)
- (1) GAUGE
 - (1) 2"Ø x 96" LONG GALVANIZED PIPE (T.B.E.)
 - (1) 2"Ø MUSHROOM VENT
 - (1) 6" EMERGENCY VENT

△					
		Highland Tank			
UNLESS NOTED, TOLERANCES ARE +/- 1"					
3,000 GAL PETRO HOPPER					
CUSTOMER:					
PROJECT:					
QUOTE NO:				CHK'D BY:	
SCALE:	DATE:	DWG. BY:	DWG. NO:		
3/8"=1'-0"			3000PH		