

GENERAL SPECIFICATIONS

NO. REQ'D: (1)
 CAPACITY: 3000 GALLONS
 TYPE: RECTANGULAR, HTC-G, ABOVEGROUND, SINGLEWALL
 MATERIAL: MILD CARBON STEEL
 FLOW RATE: 300 GPM

GAUGE:
 SHELL- 7 GA
 HEADS- 7 GA
 SURFACE PREP:
 SSPC NO.10 BLAST ALL INTERIOR SURFACES
 SSPC NO.6 BLAST ALL EXTERIOR SURFACES

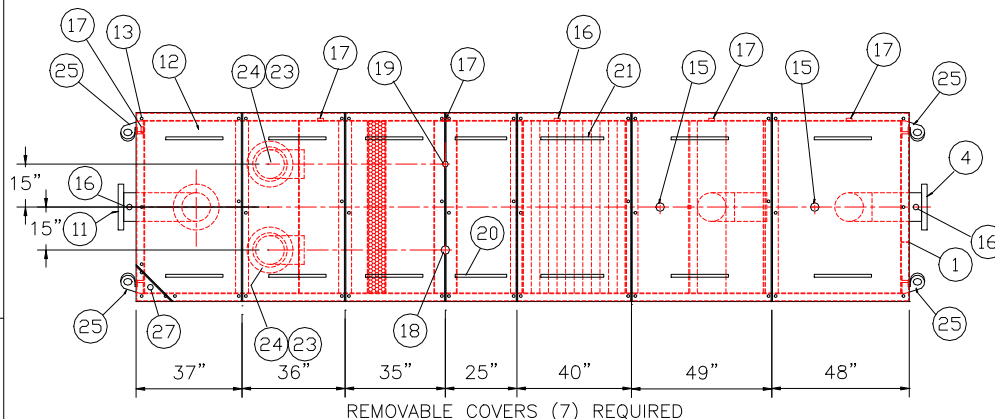
COATING:	MATERIAL	THICKNESS
EXTERIOR-	CHEMPRIME 3001	(3-6 MILS)
	CHEMLINE 3300	(2-3 MILS)
	TOP COAT "WHITE"	

INTERIOR- CHEMLINE 4200 PW (15 MILS)

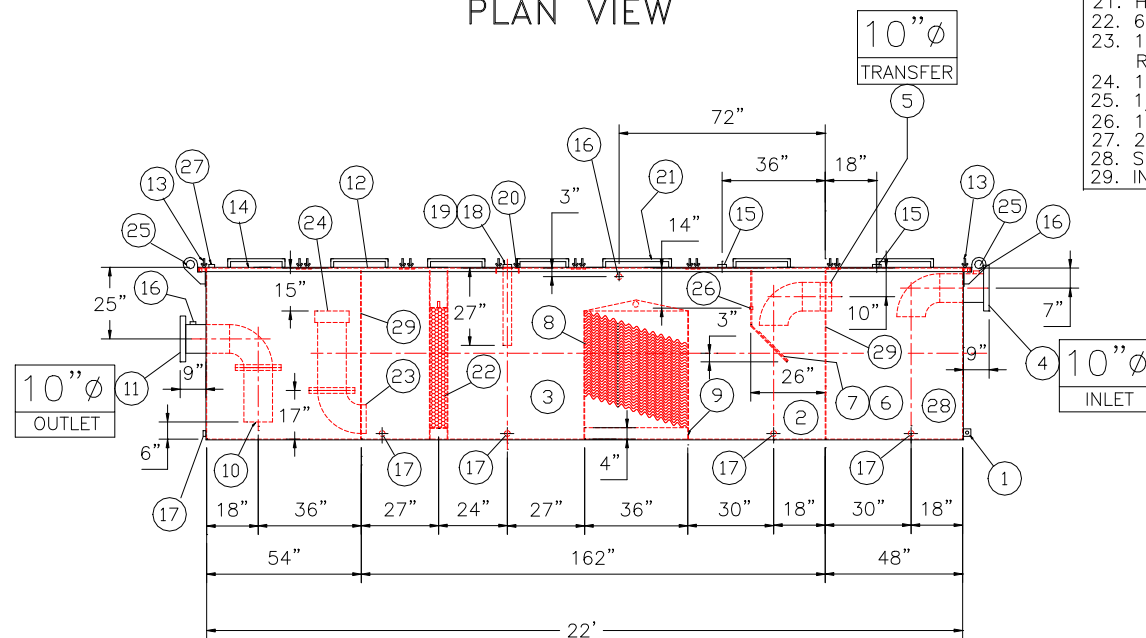
CONSTRUCTION:
 BUTT FIT & WELD ALL CORNERS IN & OUT

NOTES

- ALL INTERNAL MATERIAL IS 10 GA
- ALL THREADED DRAIN FITTINGS TO HAVE STEEL THREADED PLUGS AND COATED WITH TANK
- ALL OTHER THREADED FITTINGS TO HAVE PVC THREADED PLUGS
- LIFTING LUGS HAVE REINFORCING PLATES



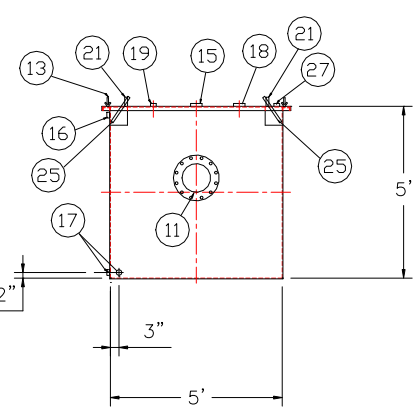
PLAN VIEW



ELEVATION

REQUIRED EQUIPMENT

- 3"x3"x1/4" FLAT W/ 9/16"Ø HOLE DRILLED IN CENTER (GROUNDING LUG)
- SEDIMENT CHAMBER
- OIL WATER SEPARATOR CHAMBER
- 150# RFSO FLANGED INLET
- STEEL TRANSFER ELBOW PIPING
- VELOCITY HEAD DIFFUSION BAFFLE - 10GA
- WEAR PLATE - 1/4"
- REMOVABLE PARALLEL CORRUGATED PLATE COALESCER (CORELLA PVC PLATES) 1" PLATE SPACING
- SLUDGE BAFFLE - 10GA
- FLANGED PVC OUTLET DOWNCOMER PIPE
- 150# RFSO FLANGED OUTLET W/ INTERNAL STEEL ELBOW AND FLANGE
- (7) PIECE COVER W/ 5/8" BOLT HOLES - 7 GA
- NUTS & BOLTS W/ LARGE WING NUTS-TYP. (CORROSION RESISTANT)
- GASKET MATERIAL (FOR EACH REMOVABLE COVER)
- 3"Ø FNPT (CLEAN-OUT)
- 2"Ø FNPT (VENT)
- 2"Ø FNPT HALF COUPLING (DRAIN) W/ STEEL PLUG
- 3"Ø FNPT FULL COUPLING W/ 3"Ø INTERNAL PVC PIPE (OIL PUMPOUT)
- 2"Ø FNPT HALF COUPLING (INTERFACE LEVEL SENSOR)
- 7GA. CROSSMEMBER 9" WIDE FOR OIL PUMP-OUT AND LEVEL SENSOR FTG.
- HANDLES PER H.T. STANDARD
- 6" THICK REMOVABLE PETROSCREEN CARTRIDGE COALESCER
- 10"Ø STEEL ELBOW W/ FLANGE WELDED TO TOP FOR PVC RISER PIPES
- 10"Ø ADJUSTABLE FERNCO COUPLING
- 1/2" THICK LIFTING LUG ANGLED TOWARD CENTER
- 1"Ø FNPT COUPLING W/ PLUG
- 2"Ø FNPT HALF COUPLING (SPARE)
- SLUDGE CHAMBER
- INTERNAL BULKHEAD



END VIEW

NOTE :
 ALL RIGHTS RESERVED. THIS DRAWING OR ANY PART THEREOF MUST NOT BE REPRODUCED IN ANY FORM WITHOUT THE WRITTEN PERMISSION OF HIGHLAND TANK.
 HIGHLAND TANK SHALL BE RESPONSIBLE ONLY FOR ITEMS INDICATED ON THIS FABRICATION DRAWING UNLESS OTHERWISE NOTED. CUSTOMER IS RESPONSIBLE FOR VERIFYING CORRECTNESS OF SIZE / LOCATION OF FITTINGS , ACCESSORIES & COATINGS SHOWN ON THIS DRAWING

UNLESS OTHERWISE SPECIFIED DIMENSIONS ARE IN INCHES
 TOLERANCES ARE + OR - 1"

SCALE: 1/4"=1'-0" DATE: 1-31-14 DWG. BY: 03000RECSWHTCG

REVISIONS



Highland Tank

U.S. Patent #4,722,800 Canadian Patent # 1,296,263

3000 GALLON OIL WATER SEPARATOR
 RECTANGULAR, HTC-G, SINGLE WALL

CUSTOMER:

PROJECT:

QUOTE NO:

CHK'D BY:

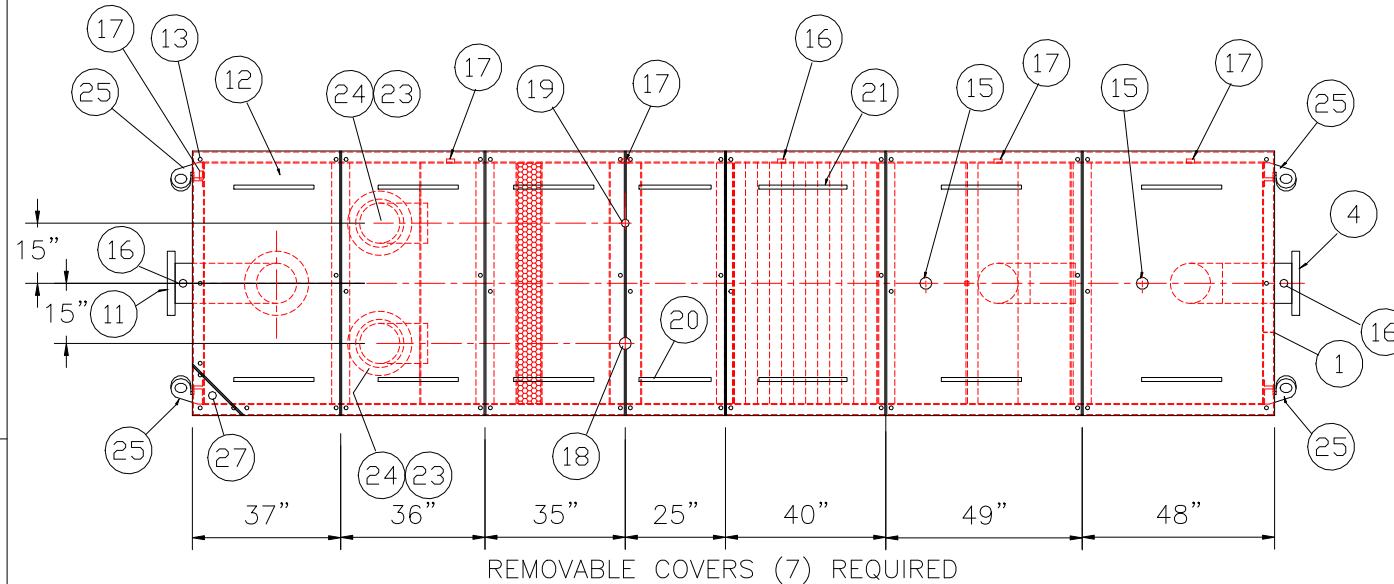
DWG. NO.: 03000RECSWHTCG

GENERAL SPECIFICATIONS

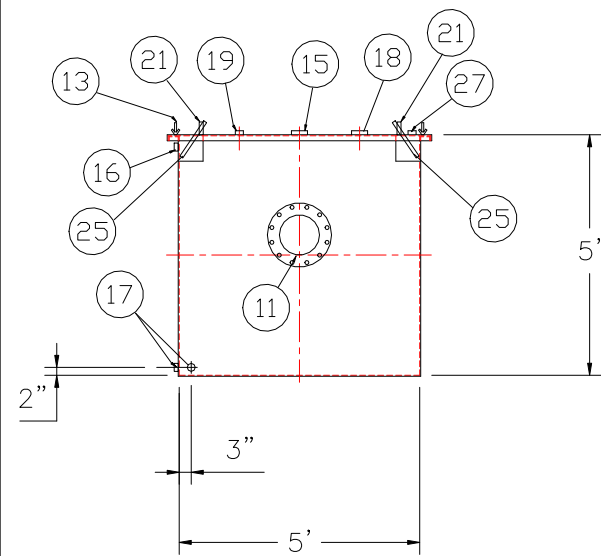
NO. REQ'D: (1)
 CAPACITY: 3000 GALLONS
 TYPE: RECTANGULAR, HTC-G, ABOVEGROUND, SINGLEWALL
 MATERIAL: MILD CARBON STEEL
 FLOW RATE: 300 GPM
 GAUGE:
 SHELL- 7 GA
 HEADS- 7 GA
 SURFACE PREP:
 SSPC NO.10 BLAST ALL INTERIOR SURFACES
 SSPC NO.6 BLAST ALL EXTERIOR SURFACES
 COATING: MATERIAL THICKNESS
 EXTERIOR- CHEMPRIME 3001 (3-6 MILS)
 CHEMLINE 3300 (2-3 MILS)
 TOP COAT "WHITE"
 INTERIOR- CHEMLINE 4200 PW (15 MILS)
 CONSTRUCTION:
 BUTT FIT & WELD ALL CORNERS IN & OUT

NOTES

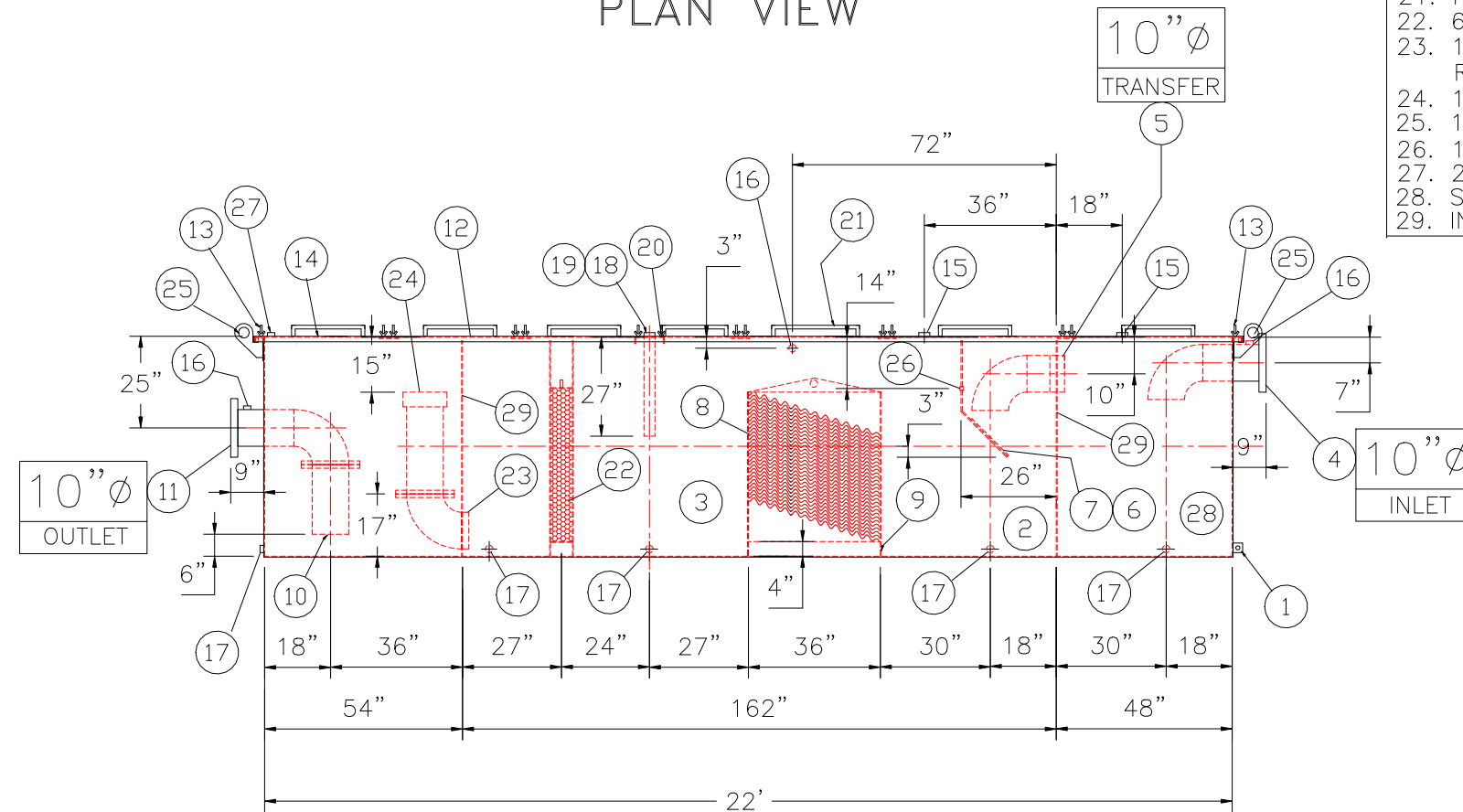
- ALL INTERNAL MATERIAL IS 10 GA
- ALL THREADED DRAIN FITTINGS TO HAVE STEEL THREADED PLUGS AND COATED WITH TANK
- ALL OTHER THREADED FITTINGS TO HAVE PVC THREADED PLUGS
- LIFTING LUGS HAVE REINFORCING PLATES



PLAN VIEW



END VIEW



ELEVATION

PROVIDED EQUIPMENT

- 3"x3"x1/4" FLAT W/ 9/16"Ø HOLE DRILLED IN CENTER (GROUNDING LUG)
- SEDIMENT CHAMBER
- OIL WATER SEPARATOR CHAMBER
- 150# RFSO FLANGED INLET
- STEEL TRANSFER ELBOW PIPING
- VELOCITY HEAD DIFFUSION BAFFLE - 10GA
- WEAR PLATE - 1/4"
- REMOVABLE PARALLEL CORRUGATED PLATE COALESCER (CORELLA PVC PLATES) 1" PLATE SPACING
- SLUDGE BAFFLE - 10GA
- FLANGED PVC OUTLET DOWNCOMER PIPE
- 150# RFSO FLANGED OUTLET W/ INTERNAL STEEL ELBOW AND FLANGE
- (7) PIECE COVER W/ 5/8" BOLT HOLES - 7 GA
- NUTS & BOLTS W/ LARGE WING NUTS-TYP. (CORROSION RESISTANT)
- GASKET MATERIAL (FOR EACH REMOVABLE COVER)
- 3"Ø FNPT (CLEAN-OUT)
- 2"Ø FNPT (VENT)
- 2"Ø FNPT HALF COUPLING (DRAIN) W/ STEEL PLUG
- 3"Ø FNPT FULL COUPLING W/ 3"Ø INTERNAL PVC PIPE (OIL PUMPOUT)
- 2"Ø FNPT HALF COUPLING (INTERFACE LEVEL SENSOR)
- 7GA. CROSSMEMBER 9" WIDE FOR OIL PUMP-OUT AND LEVEL SENSOR FTG.
- HANDLES PER H.T. STANDARD
- 6" THICK REMOVABLE PETROSCREEN CARTRIDGE COALESCER
- 10"Ø STEEL ELBOW W/ FLANGE WELDED TO TOP FOR PVC RISER PIPES
- 10"Ø ADJUSTABLE FERNCO COUPLING
- 1/2" THICK LIFTING LUG ANGLED TOWARD CENTER
- 1"Ø FNPT COUPLING W/ PLUG
- 2"Ø FNPT HALF COUPLING (SPARE)
- SLUDGE CHAMBER
- INTERNAL BULKHEAD

REVISIONS



Highland Tank

U.S. Patent #4,722,800 Canadian Patent # 1,296,263

3000 GALLON OIL WATER SEPARATOR
 RECTANGULAR, HTC-G, SINGLE WALL

CUSTOMER:

PROJECT:

QUOTE NO:

CHK'D BY:

UNLESS OTHERWISE SPECIFIED DIMENSIONS ARE IN INCHES
 TOLERANCES ARE + OR - 1"

SCALE:
 1/4"=1'-0"

DATE:
 1-31-14

DWG. BY:

DWG. NO.:

03000RECSWHTCG

NOTE :
 ALL RIGHTS RESERVED. THIS DRAWING OR ANY PART THEREOF MUST NOT BE REPRODUCED IN ANY FORM WITHOUT THE WRITTEN PERMISSION OF HIGHLAND TANK.
 HIGHLAND TANK SHALL BE RESPONSIBLE ONLY FOR ITEMS INDICATED ON THIS FABRICATION DRAWING UNLESS OTHERWISE NOTED. CUSTOMER IS RESPONSIBLE FOR VERIFYING CORRECTNESS OF SIZE / LOCATION OF FITTINGS, ACCESSORIES & COATINGS SHOWN ON THIS DRAWING