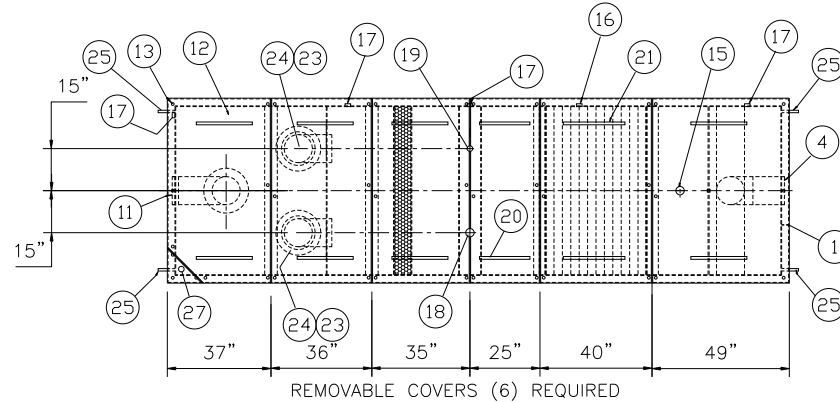


## GENERAL SPECIFICATIONS

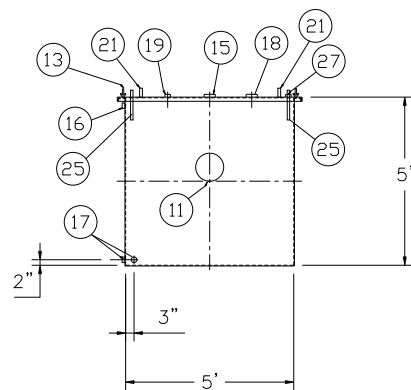
NO. REQ'D: (1)  
 CAPACITY: 3000 GALLONS  
 TYPE: RECTANGULAR, HTC, ABOVEGROUND, SINGLEWALL  
 MATERIAL: MILD CARBON STEEL  
 FLOW RATE: 250 GPM  
 GAUGE:  
 SHELL- 7 GA  
 HEADS- 7 GA  
 SURFACE PREP:  
 SSPC NO.10 BLAST ALL INTERIOR SURFACES  
 SSPC NO.6 BLAST ALL EXTERIOR SURFACES  
 COATING: MATERIAL THICKNESS  
 EXTERIOR- FINISH PAINT WHITE  
 INTERIOR- POLYURETHANE (3 MILS)  
 CONSTRUCTION: (15 MILS)  
 BUTT FIT & WELD ALL CORNERS IN & OUT

## NOTES

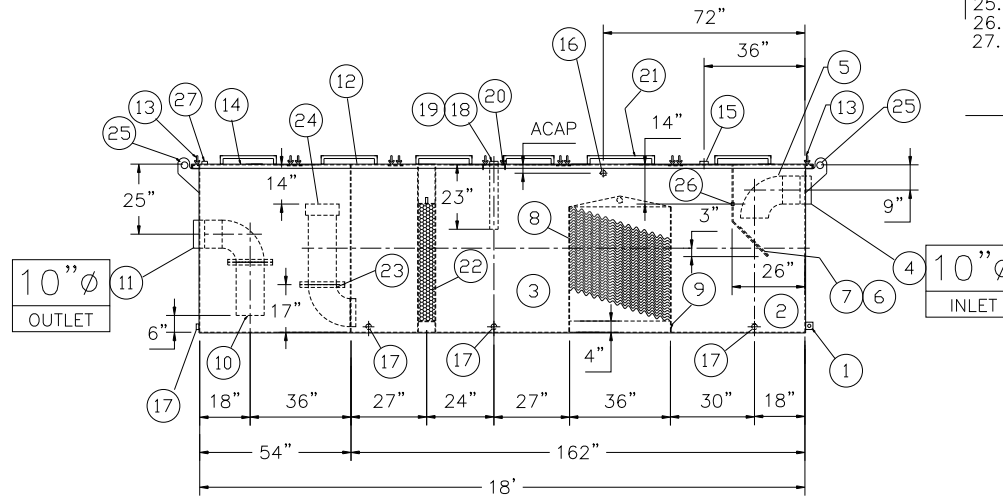
- ALL INTERNAL MATERIAL IS 10 GA
- ALL DRAINS MUST SHIP W/ STEEL PLUGS INSTALLED
- LIFTING LUGS HAVE REINFORCING PLATES



PLAN VIEW



END VIEW



ELEVATION

## PROVIDED EQUIPMENT

- 3\"/>

## REVISIONS



**Highland Tank**

U.S. Patent #4,722,800 Canadian Patent # 1,296,263  
 #6,606,224 # 2,389,065

3000 GALLON OIL WATER SEPARATOR  
 RECTANGULAR, HTC, SINGLE WALL

CUSTOMER:

PROJECT:

QUOTE NO:

CHK'D BY:

SCALE:

DATE:

DWG. BY:

DWG. NO.:

03000RECSWHTC

NOTE :  
 ALL RIGHTS RESERVED. THIS DRAWING OR ANY PART THEREOF MUST NOT BE REPRODUCED IN ANY FORM WITHOUT THE WRITTEN PERMISSION OF HIGHLAND TANK.  
 HIGHLAND TANK SHALL BE RESPONSIBLE ONLY FOR ITEMS INDICATED ON THIS FABRICATION DRAWING UNLESS OTHERWISE NOTED. CUSTOMER IS RESPONSIBLE FOR VERIFYING CORRECTNESS OF SIZE / LOCATION OF FITTINGS , ACCESSORIES & COATINGS SHOWN ON THIS DRAWING

UNLESS OTHERWISE SPECIFIED DIMENSIONS ARE IN INCHES  
 TOLERANCES ARE + OR - 1"