

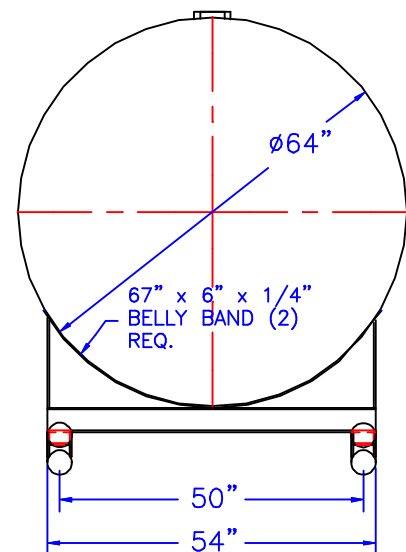
NOTE :
ALL RIGHTS RESERVED. THIS DRAWING OR ANY PART THEREOF MUST NOT BE REPRODUCED IN ANY FORM WITHOUT THE WRITTEN PERMISSION OF HIGHLAND TANK.
HIGHLAND TANK SHALL BE RESPONSIBLE ONLY FOR ITEMS INDICATED ON THIS FABRICATION DRAWING UNLESS OTHERWISE NOTED. CUSTOMER IS RESPONSIBLE FOR VERIFYING CORRECTNESS OF SIZE / LOCATION OF FITTINGS , ACCESSORIES & COATINGS SHOWN ON THIS DRAWING

FITTING SCHEDULE

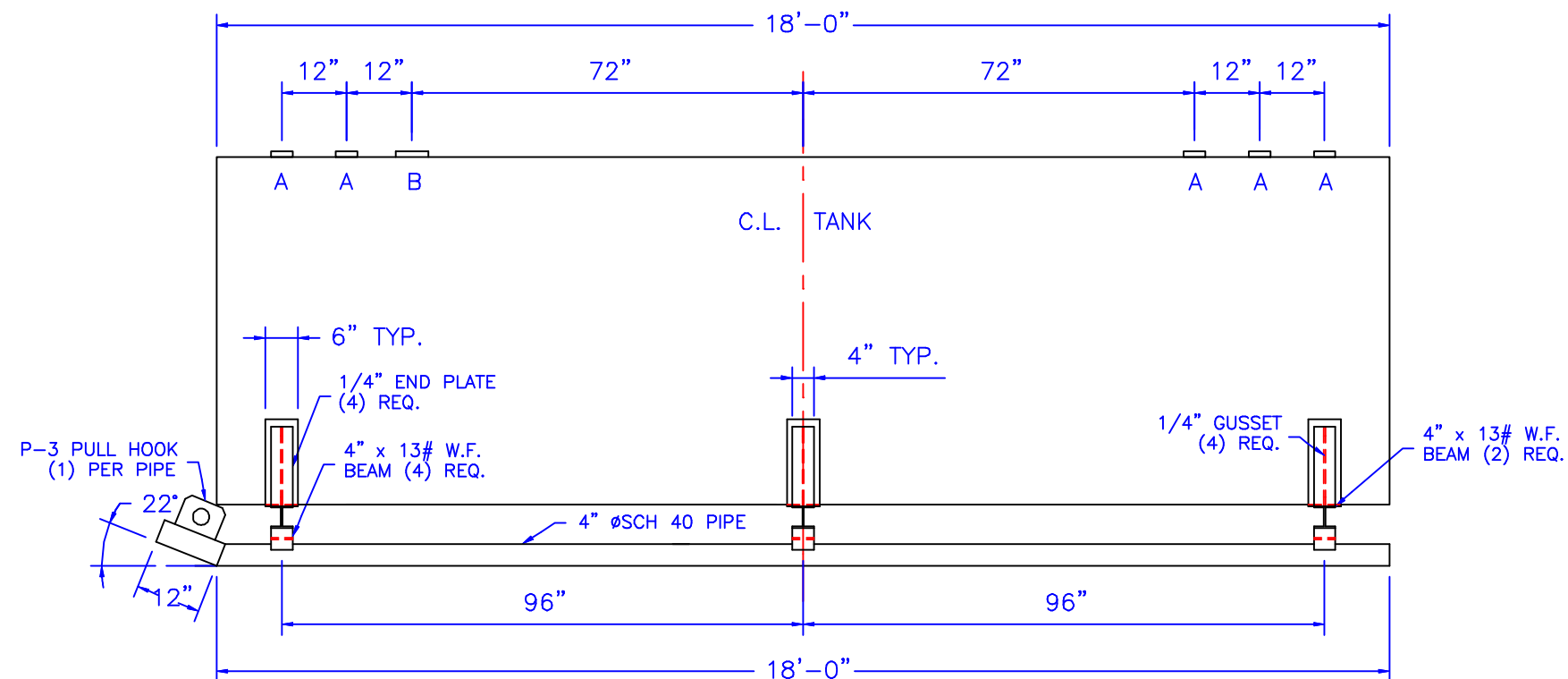
A= 4" \varnothing NPT
B= 6" \varnothing NPT (EMERGENCY VENT)

GENERAL NOTES

CAPACITY : 3000 GALLONS
TYPE : SINGLE WALL, ABOVEGROUND, HEAVY DUTY SKID
NO. REQ. :
MATERIAL : MILD CARBON STEEL
TEST : 5 P.S.I.
MIN. GAUGE OR THICKNESS (PER U.L. 142):
HEADS : 7 GA.
SHELL : 7 GA.
PAINT :
INTERIOR : NONE
EXTERIOR : RED PRIMER
CONSTRUCTION : FLAT FLANGED HEADS, LAP WELD ALL
EXTERIOR SEAMS ONLY
APPROVED LABELS : U.L. 142
OPERATING PRESSURE ATMOSPHERIC:



END VIEW



ELEVATION

<div style="text-align: center;">  <h1 style="margin: 0;">Highland Tank</h1> </div>			
<h2>3000 GALLON ABOVEGROUND HORIZONTAL SINGLE WALL HEAVY DUTY SKID</h2>			
CUSTOMER:			
PROJECT:			
QUOTE NO:			CHK'D BY:
SCALE: 3/8"=1'-0"	DATE:	DWG. BY:	DWG. NO.: 03000SWHDSK7GA.