

DETAIL A
NTS

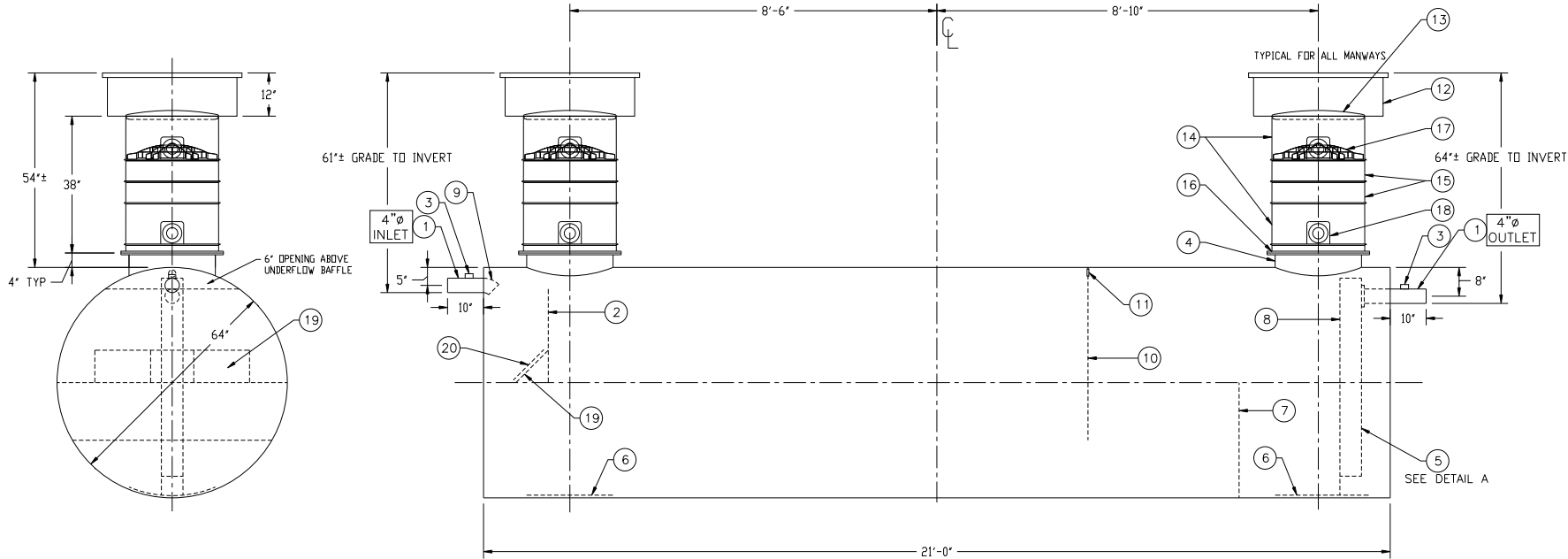
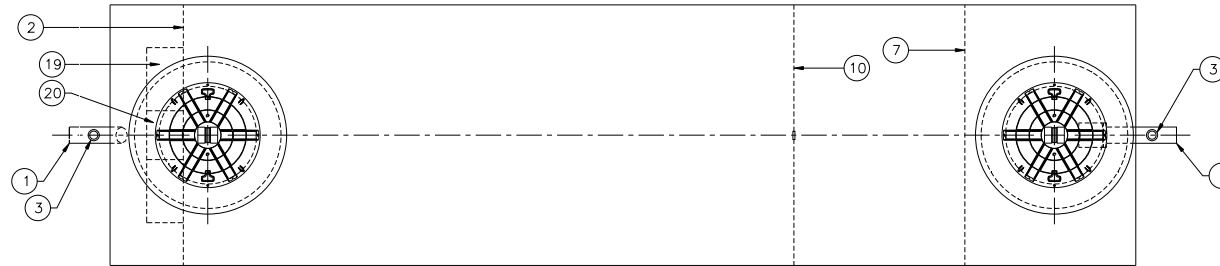
CUSTOMER APPROVAL

THE CUSTOMER HAS REVIEWED THIS
DRAWING AND VERIFIED THE ACCURACY OF
ALL INFORMATION AND DIMENSIONS.

SIGNED: _____

DATE: _____

NOTE: BUOYANCY RESTRAINT NOT SHOWN
CUSTOMER TO ADDRESS BEFORE INSTALLATION
CONTACT HIGHLAND TANK FOR OPTIONS




GENERAL SPECIFICATIONS

QUANTITY: ONE (1)
MODEL: PGI-3500-2
NOMINAL CAPACITY: 3,500 GALLONS
STATIC WATER CAPACITY: 3,159.0 GALLONS
TYPE: SINGLE WALL, HIGHGUARD, UNDERGROUND
MATERIAL: MILD CARBON STEEL
GAUGE OF SHELL: 7 GA
GAUGE OF HEADS: 7 GA
GAUGE OF MATERIAL BASED ON MAXIMUM BURIAL DEPTH
OF 60"
LAP FIT AND WELD INTERIOR AND EXTERIOR SEAMS
SURFACE PREP: SSPC-SP 10 BLAST INTERIOR SURFACES
SSPC-SP 6 BLAST EXTERIOR SURFACES
COATING, EXTERIOR: HIGHGUARD POLYURETHANE-75 MILS
COATING, INTERIOR: POLYURETHANE - 15 MILS
OPERATING PRESSURE: ATMOSPHERIC
APPROXIMATE DRY WEIGHT: 4,200 LBS
NOTE: MINIMUM OF ONE 2" VENT PIPE MUST BE
INSTALLED IN EACH MANWAY RISER

PROVIDED EQUIPMENT

1. 4" SCH 40 PIPE STUB W/ 2" NPT FTG FOR VENT
2. UNDERFLOW BAFFLE - 7 GA
3. 2" NPT FTG FOR VENT
4. 24" MANWAY FOR STACKABLE RISER
5. STEEL OUTLET DOWNCOMER BAFFLE W/ OPEN TOP FOR EFFLUENT SAMPLING
6. 1/4" STRIKER PLATE (AT ALL MANWAYS)
7. SLUDGE BAFFLE - 7 GA
8. VELOCITY DIFFUSION BREAKER
9. 4" 45° DIFFUSION ELBOW
10. GREASE DAM - 7 GA
11. 2" OPENING FOR AIR CIRCULATION
12. 36" GRADE-LEVEL MANWAY - SHIPPED LOOSE
13. 24" PVC COVER
14. 24" x 12" STACKABLE RISER - ALL STACKABLE RISER COMPONENTS ARE PRE-ASSEMBLED AND COMPLETE MANWAY RISER IS SHIPPED LOOSE
15. 24" x 6" STACKABLE RISER
16. STACKABLE RISER ADAPTER RING & GASKET
17. STACKABLE RISER SAFETY SCREEN
18. KNOCKOUT FOR VENT PIPING - (4) KNOCKOUTS PER EACH 12" RISER SECTION
19. DIFFUSION BAFFLE - 1/4"
20. 12" x 12" WEAR PLATE - 1/4"

REVISIONS	
 Highland Tank®	
PASSIVE GREASE INTERCEPTOR 3,500 GALLON - DOUBLE BASIN	
CUSTOMER:	
PROJECT:	
QUOTE NO:	CHK'D BY:
SCALE: DATE: NTS 9/4/12	DWG BY: MGS DWG NO: PGI-3500-2

NOTE:
ALL RIGHTS RESERVED. THIS DRAWING, OR ANY PART THEREOF, MUST NOT
BE REPRODUCED IN ANY FORM WITHOUT WRITTEN PERMISSION FROM
HIGHLAND TANK. UNLESS OTHERWISE NOTED, HIGHLAND TANK SHALL BE
RESPONSIBLE ONLY FOR ITEMS INDICATED ON THIS FABRICATION DRAWING.
THE CUSTOMER IS RESPONSIBLE FOR VERIFYING THE CORRECTNESS OF
THE TYPE, SIZE, AND LOCATION OF ALL FITTINGS, ACCESSORIES, AND
COATINGS SHOWN ON THIS DRAWING.

DIMENSION TOLERANCE: ± 1"