

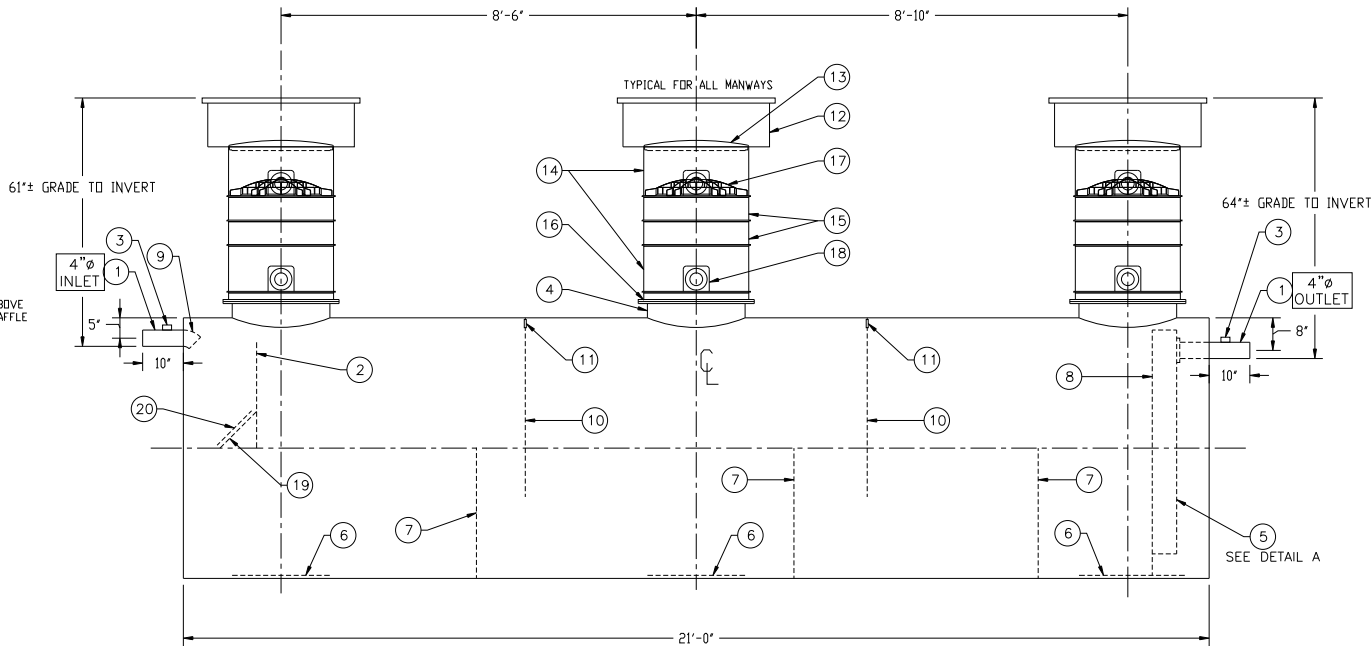
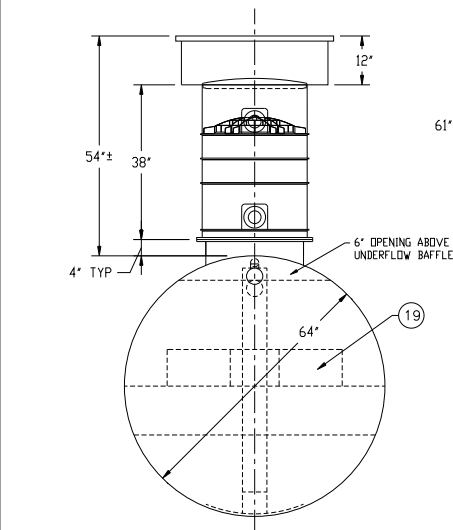
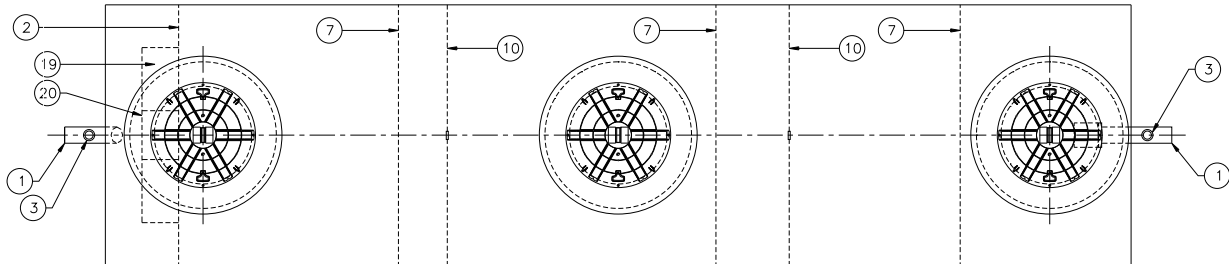
NOTE: BUOYANCY RESTRAINT NOT SHOWN  
CUSTOMER TO ADDRESS BEFORE INSTALLATION  
CONTACT HIGHLAND TANK FOR OPTIONS

**CUSTOMER APPROVAL**

THE CUSTOMER HAS REVIEWED THIS  
DRAWING AND VERIFIED THE ACCURACY OF  
ALL INFORMATION AND DIMENSIONS.

SIGNED: \_\_\_\_\_

DATE: \_\_\_\_\_



NOTE:  
ALL RIGHTS RESERVED. THIS DRAWING, OR ANY PART THEREOF, MUST NOT  
BE REPRODUCED IN ANY FORM WITHOUT WRITTEN PERMISSION FROM  
HIGHLAND TANK. UNLESS OTHERWISE NOTED, HIGHLAND TANK SHALL BE  
RESPONSIBLE ONLY FOR ITEMS INDICATED ON THIS FABRICATION DRAWING.  
THE CUSTOMER IS RESPONSIBLE FOR VERIFYING THE CORRECTNESS OF  
THE TYPE, SIZE, AND LOCATION OF ALL FITTINGS, ACCESSORIES, AND  
COATINGS SHOWN ON THIS DRAWING.

## GENERAL SPECIFICATIONS

QUANTITY: ONE (1)  
MODEL: PGI-3500-3  
NOMINAL CAPACITY: 3,500 GALLONS  
STATIC WATER CAPACITY: 3,159.0 GALLONS  
TYPE: SINGLE WALL, HIGHGUARD, UNDERGROUND  
MATERIAL: MILD CARBON STEEL  
GAUGE OF SHELL: 7 GA  
GAUGE OF HEADS: 7 GA  
GAUGE OF MATERIAL BASED ON MAXIMUM BURIAL DEPTH  
OF 60"  
LAP FIT AND WELD INTERIOR AND EXTERIOR SEAMS  
SURFACE PREP: SSPC-SP 10 BLAST INTERIOR SURFACES  
SSPC-SP 6 BLAST EXTERIOR SURFACES  
COATING, EXTERIOR: HIGHGUARD POLYURETHANE-75 MILS  
COATING, INTERIOR: POLYURETHANE - 15 MILS  
OPERATING PRESSURE: ATMOSPHERIC  
APPROXIMATE DRY WEIGHT: 4,550 LBS  
NOTE: MINIMUM OF ONE 2" VENT PIPE MUST BE  
INSTALLED IN EACH MANWAY RISER

## PROVIDED EQUIPMENT

- 4" SCH 40 PIPE STUB W/ 2" NPT FTG FOR VENT
- UNDERFLOW BAFFLE - 7 GA
- 2" NPT FTG FOR VENT
- 24" MANWAY FOR STACKABLE RISER
- STEEL OUTLET DOWNCOMER BAFFLE W/ OPEN  
TOP FOR EFFLUENT SAMPLING
- 1/4" STRIKER PLATE (AT ALL MANWAYS)
- SLUDGE BAFFLE - 7 GA
- VELOCITY DIFFUSION BREAKER
- 4" 45° DIFFUSION ELBOW
- GREASE DAM - 7 GA
- 2" OPENING FOR AIR CIRCULATION
- 36" GRADE-LEVEL MANWAY - SHIPPED LOOSE
- 24" PVC COVER
- 24" x 12" STACKABLE RISER - ALL STACKABLE  
RISER COMPONENTS ARE PRE-ASSEMBLED AND  
COMPLETE MANWAY RISER IS SHIPPED LOOSE
- 24" x 6" STACKABLE RISER
- STACKABLE RISER ADAPTER RING & GASKET
- STACKABLE RISER SAFETY SCREEN
- KNOCKOUT FOR VENT PIPING - (4) KNOCKOUTS PER  
EACH 12" RISER SECTION
- DIFFUSION BAFFLE -1/4"
- 12" x 12" WEAR PLATE -1/4"



## REVISIONS



**Highland Tank®**

PASSIVE GREASE INTERCEPTOR  
3,500 GALLON - TRIPLE BASIN

CUSTOMER:

PROJECT:

QUOTE NO:

SCALE: DATE:

NTS 9/4/12

DWG BY:

MGS

CHK'D BY:

DWG NO:

PGI-3500-3

DIMENSION TOLERANCE: ± 1"