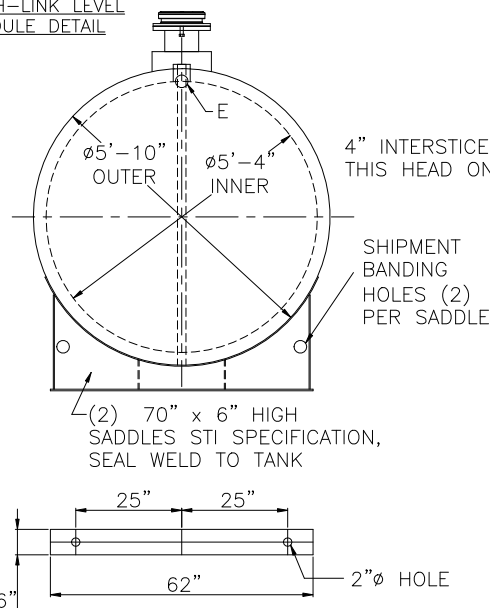


### HIGH-LINK LEVEL MODULE DETAIL



4" INTERSTICE —  
THIS HEAD ONLY

SHIPMENT  
BANDING  
HOLES (2)  
PER SADDLE

L(2) 70" x 6" HIGH  
SADDLES STI SPECIFICATION,  
SEAL WELD TO TANK

Technical drawing of a shaft with two 2"  $\varnothing$  HOLES. The shaft has a total length of 62". The distance from the left end to the center of the first hole is 25", and the distance between the centers of the two holes is also 25". The shaft has a diameter of 6".

NOTES:  
STRIKER PLATES ARE NOT SUPPLIED ON  
FIREGUARDS, UNLESS SPECIFIED

NOTE: ALL RIGHTS RESERVED. THIS DRAWING MUST NOT BE REPRODUCED IN ANY FORM WITHOUT THE WRITTEN PERMISSION OF HIGHLAND TANK®. HIGHLAND TANK® SHALL BE RESPONSIBLE ONLY FOR ITEMS INDICATED ON THIS FABRICATION DRAWING UNLESS OTHERWISE NOTED. CUSTOMER IS RESPONSIBLE FOR VERIFYING CORRECTNESS OF SIZE AND LOCATION OF FITTINGS, ACCESSORIES, AND COATINGS SHOWN ON THIS DRAWING.

INSTALLED

(1) HIGH-LINK LEVEL MODULE MODEL# LS-CS15-CAP 72" LONG & BUSHING.

### LEGEND

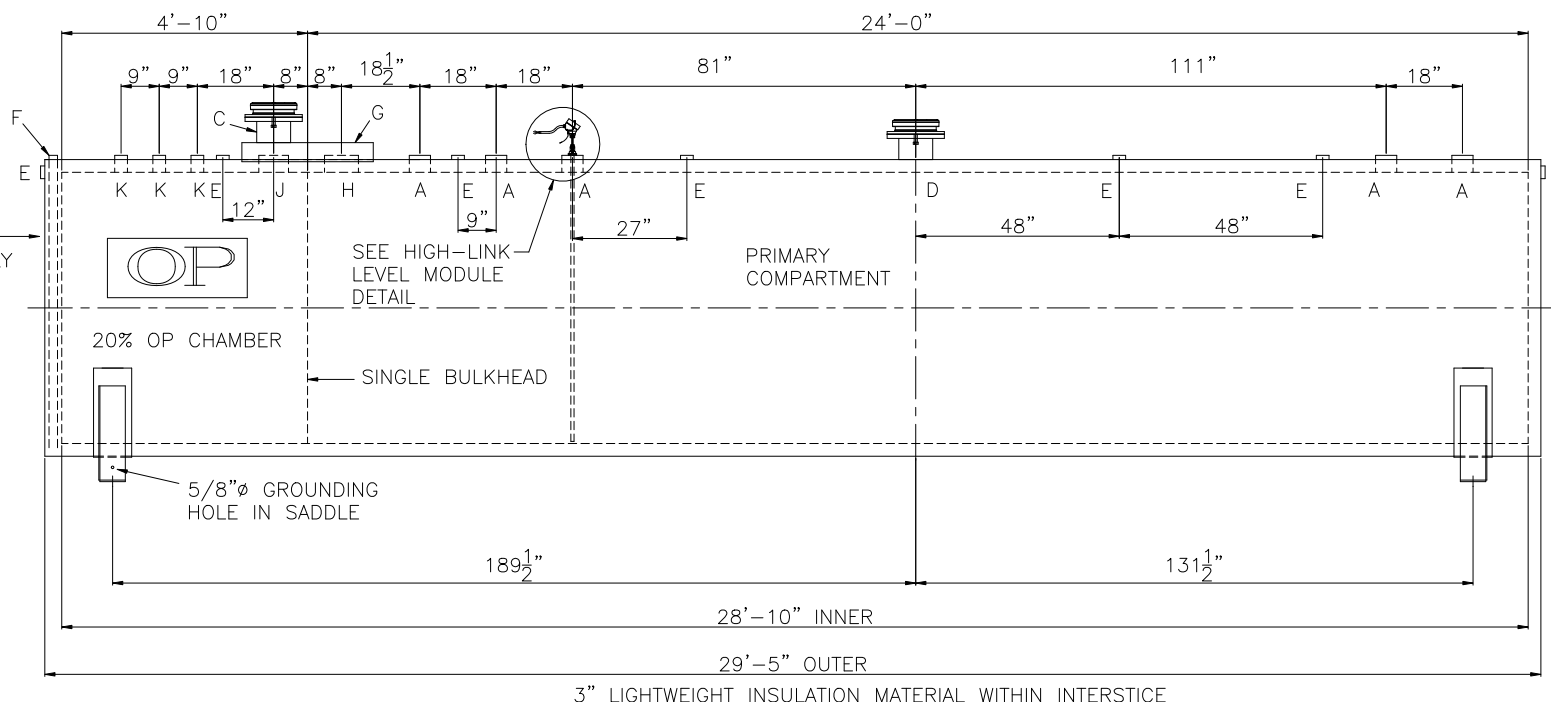
A	4" FEMALE FIREGUARD COUPLING	G	31" LONG x 14" WIDE x 4" HIGH CLOSED TOP STEEL ENCLOSURE WELDED TO OUTER TANK
B	—	H	8" SCH 40 PIPE
C	8" FFSO 150# FLANGE — PRIMARY EMERGENCY VENT USE ONLY	J	6" FEMALE FIREGUARD COUPLING
D	8" FFSO 150# FLANGE THROUGH OUTER SHELL ONLY, MARK WITH SPECIAL WARNING LABEL INTERSTITIAL EMERGENCY VENT USE ONLY	K	2" FEMALE FIREGUARD COUPLING
E	2" FITTING THROUGH OUTER SHELL ONLY WITH CAST IRON PLUG— MFG USE ONLY	L	—
F	2" INTERSTITIAL MONITOR PIPE — MALE NPT END		

SHIP LOOSE

(2) 8" FLANGED EMERGENCY VENTS

TOUCH UP OF FINISHED PAINT IS REQUIRED BY INSTALLATION CONTRACTOR. TOUCH UP PAINT SHIPPED WITH TANK.
---

SHIPPING LUGS AS NEEDED



3" LIGHTWEIGHT INSULATION MATERIAL WITHIN INTERSTICE

## DESIGN DATA

CAPACITY : 4,000 GALLONS
--------------------------

TYPE: FIREGUARD® CYLINDRICAL

FIREGUARD® IS A TRADEMARK OF THE STEEL TANK INSTITUTE

NO.	REQ.	—	—
1	1	1	1
2	2	2	2
3	3	3	3
4	4	4	4
5	5	5	5
6	6	6	6
7	7	7	7
8	8	8	8
9	9	9	9
10	10	10	10
11	11	11	11
12	12	12	12
13	13	13	13
14	14	14	14
15	15	15	15
16	16	16	16
17	17	17	17
18	18	18	18
19	19	19	19
20	20	20	20
21	21	21	21
22	22	22	22
23	23	23	23
24	24	24	24
25	25	25	25
26	26	26	26
27	27	27	27
28	28	28	28
29	29	29	29
30	30	30	30
31	31	31	31
32	32	32	32
33	33	33	33
34	34	34	34
35	35	35	35
36	36	36	36
37	37	37	37
38	38	38	38
39	39	39	39
40	40	40	40
41	41	41	41
42	42	42	42
43	43	43	43
44	44	44	44
45	45	45	45
46	46	46	46
47	47	47	47
48	48	48	48
49	49	49	49
50	50	50	50
51	51	51	51
52	52	52	52
53	53	53	53
54	54	54	54
55	55	55	55
56	56	56	56
57	57	57	57
58	58	58	58
59	59	59	59
60	60	60	60
61	61	61	61
62	62	62	62
63	63	63	63
64	64	64	64
65	65	65	65
66	66	66	66
67	67	67	67
68	68	68	68
69	69	69	69
70	70	70	70
71	71	71	71
72	72	72	72
73	73	73	73
74	74	74	74
75	75	75	75
76	76	76	76
77	77	77	77
78	78	78	78
79	79	79	79
80	80	80	80
81	81	81	81
82	82	82	82
83	83	83	83
84	84	84	84
85	85	85	85
86	86	86	86
87	87	87	87
88	88	88	88
89	89	89	89
90	90	90	90
91	91	91	91
92	92	92	92
93	93	93	93
94	94	94	94
95	95	95	95
96	96	96	96
97	97	97	97
98	98	98	98
99	99	99	99
100	100	100	100

OPERATING PRESSURE – ATMOSPHERIC

SPECIFIC GRAVITY = 1.0

TANK MATERIAL - MILD CARBON STEEL

THICKNESS - INNER - HEADS AND SHELL - 7 GAUGE  
THICKNESS - OUTER - HEADS AND SHELL - 7 GAUGE  
MIN. GAUGE OR THICKNESS (PER U.L. 2085)

CONSTRUCTION - INNER - LAP WELD OUTSIDE ONLY  
CONSTRUCTION - OUTER - LAP WELD OUTSIDE ONLY

TANK TEST - PER UL 2085

INT. FINISH - NONE

EXT. FINISH - SP-6 BLAST, FINISH PAINT WHITE
--

LABEL- UL 2085 AND FIREGUARD® PER sti

