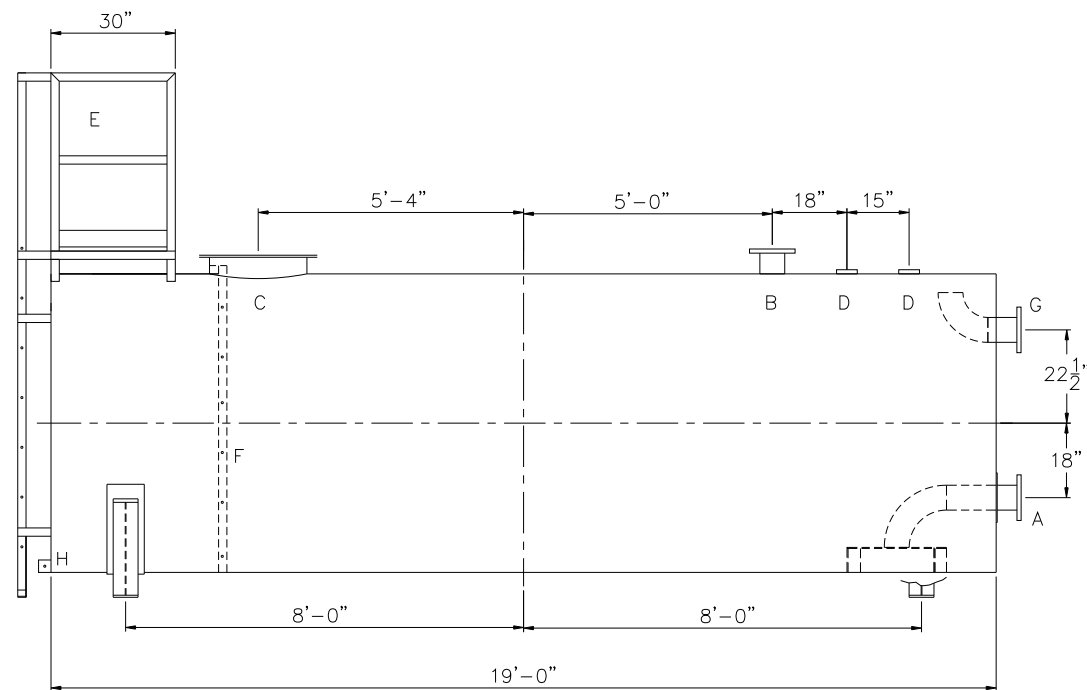


TOUCH UP OF FINISHED PAINT IS
REQUIRED BY INSTALLATION
CONTRACTOR. TOUCH UP PAINT SHIPPED
WITH TANK.

Technical drawing of a ship's hull section showing a circular tank and a central vertical structure. The tank has a diameter of 6' - 0". The central structure has a height of 42" and a width of 6 1/2". The drawing also shows a cross-section of the hull with 1-1/8" holes (4 required) and dimensions of 8", 17 1/2", 65", 2", and 2".



DESIGN DATA	LEGEND	
CAPACITY – 4,000 GALLONS	A	FLANGE WITH INTERNAL VORTEX BREAKER PER NFPA 22
TYPE – FIRE PROTECTION TANK (FPT)	B	FLANGE – VENT
NO. REQ. – –	C	24" X 1/4" PLATE TIGHT BOLT MANWAY WITH 1/8" THICK NEO-CORK GASKET
OPERATING PRESSURE – ATMOSPHERIC	D	4" FNPT CONNECTION
SPECIFIC GRAVITY = 1.0	E	STD HTM EXTERNAL LADDER & PLATFORM ASSEMBLY – PAINTED SAFETY YELLOW AND SHIPPED LOOSE FOR INSTALLATION ON SITE BY OTHERS
TANK MATERIAL – MILD CARBON STEEL	F	HTM STD INTERNAL LADDER
THICKNESS – HEADS: 5/16"	G	FLANGE WITH INTERNAL 90° ELBOW SHOWN – OVERFLOW
THICKNESS – SHELL: 1/4"	H	FB-3"x 1/4"x3" WITH 5/8"Ø HOLE ON CL (GROUNDING LUG)
CONSTRUCTION – LAP WELD INSIDE AND OUTSIDE		
TANK TEST – 5 PSIG		
INT. FINISH – SSPC SP10 BLAST, HighDRO®-LINER PLUS FOR NFPA 22 APPLICATIONS		
EXT. FINISH – SSPC SP6 BLAST, WHITE URETHANE PAINT		
LABEL – NONE		

		<h1>Highland Tank[®]</h1>	
<h2>HighDRO[®] WATER STORAGE TANK</h2>			
<h3>4,000 GAL 72"Ø AH FIRE PROTECTION TANK</h3>			
CUSTOMER:			
PROJECT:			
QUOTE NO:		CHK'D BY:	
SCALE: 3/8"=1'-0"	DATE: xx/xx/xx	DWG. BY: XXX	DWG. NO: 04000AHSWHDFT2