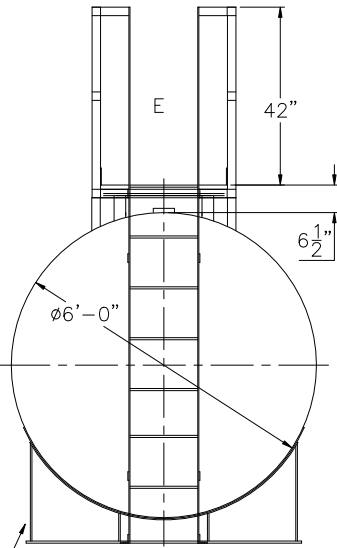


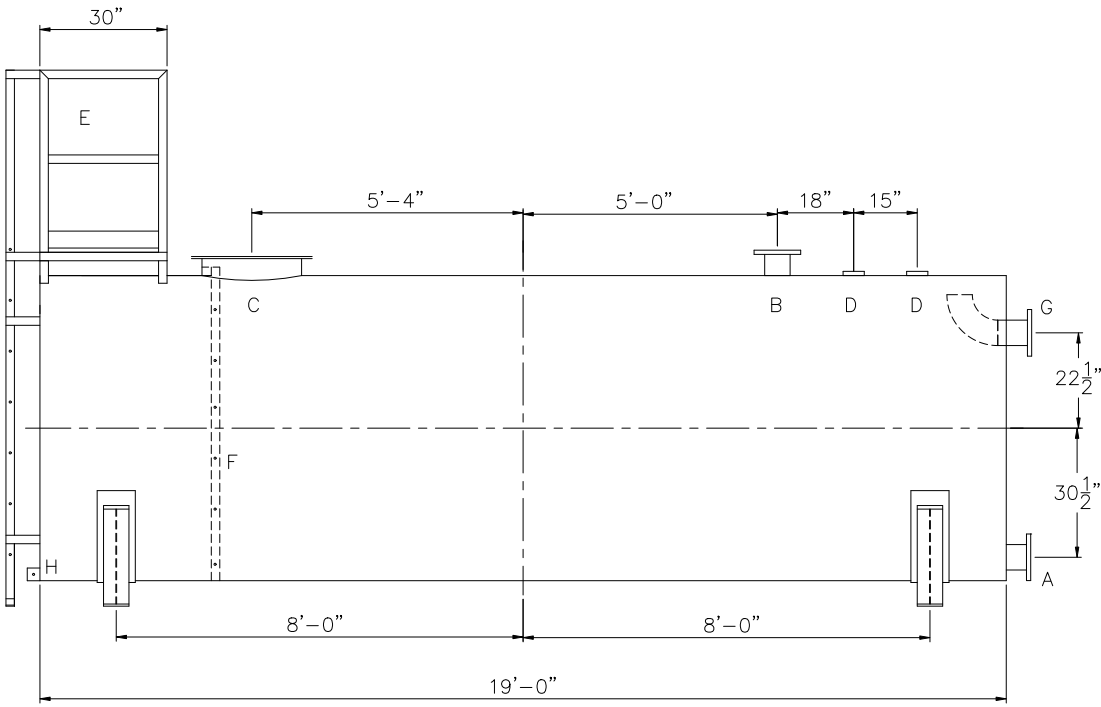
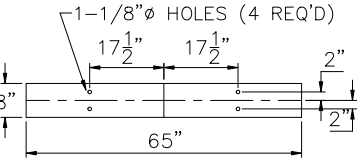
NOTE: ALL RIGHTS RESERVED. THIS DRAWING MUST NOT BE REPRODUCED IN ANY FORM WITHOUT THE WRITTEN PERMISSION OF HIGHLAND TANK. HIGHLAND TANK SHALL BE RESPONSIBLE ONLY FOR ITEMS INDICATED ON THIS FABRICATION DRAWING UNLESS OTHERWISE NOTED. CUSTOMER IS RESPONSIBLE FOR VERIFYING CORRECTNESS OF SIZE AND LOCATION OF FITTINGS, ACCESSORIES, AND COATINGS SHOWN ON THIS DRAWING.

TOUCH UP OF FINISHED PAINT IS REQUIRED BY INSTALLATION CONTRACTOR. TOUCH UP PAINT SHIPPED WITH TANK.

SHIPPING LUGS AS NEEDED



(2) 6'ø x 6" HIGH UL STYLE SADDLES, SHIP LOOSE WITH TANK.



DESIGN DATA	LEGEND
CAPACITY – 4,000 GALLONS	A FLANGE – SUPPLY
TYPE – POTABLE WATER TANK (PWT)	B FLANGE – VENT
NO. REQ. – –	C 24" X 1/4" PLATE TIGHT BOLT MANWAY WITH 1/8" THICK NEO-CORK GASKET
OPERATING PRESSURE – ATMOSPHERIC	D 4" FNPT CONNECTION
SPECIFIC GRAVITY = 1.0	E STD HTM EXTERNAL LADDER & PLATFORM ASSEMBLY – PAINTED SAFETY YELLOW AND SHIPPED LOOSE FOR INSTALLATION ON SITE BY OTHERS
TANK MATERIAL – MILD CARBON STEEL	F HTM STD INTERNAL LADDER
THICKNESS – HEADS: 5/16"	G FLANGE WITH INTERNAL 90° ELBOW SHOWN – OVERFLOW
THICKNESS – SHELL: 1/4"	H FB-3"x 1/4"x3" WITH 5/8"ø HOLE ON CL (GROUNDING LUG)
CONSTRUCTION – LAP WELD INSIDE AND OUTSIDE	
TANK TEST – 5 PSIG	
INT. FINISH – SP10 BLAST HighDRO®-LINER PLUS FOR NSF 61 APPLICATIONS	
EXT. FINISH – SSPC SP6 BLAST, WHITE URETHANE PAINT	
LABEL – NONE	

Highland Tank

UNLESS NOTED, TOLERANCES ARE +/- 1"

HighDRO® WATER STORAGE TANK

4,00 GAL 72"ø SINGLE-WALL ABOVEGROUND HORIZONTAL FOR POTABLE WATER WITH BOTTOM DRAIN

CUSTOMER:

PROJECT:

QUOTE NO:

CHK'D BY:

SCALE: 3/8"=1'-0" DATE: XX/XX/XX DWG. BY: XXX DWG. NO: 04000AHSWHPWTBD72