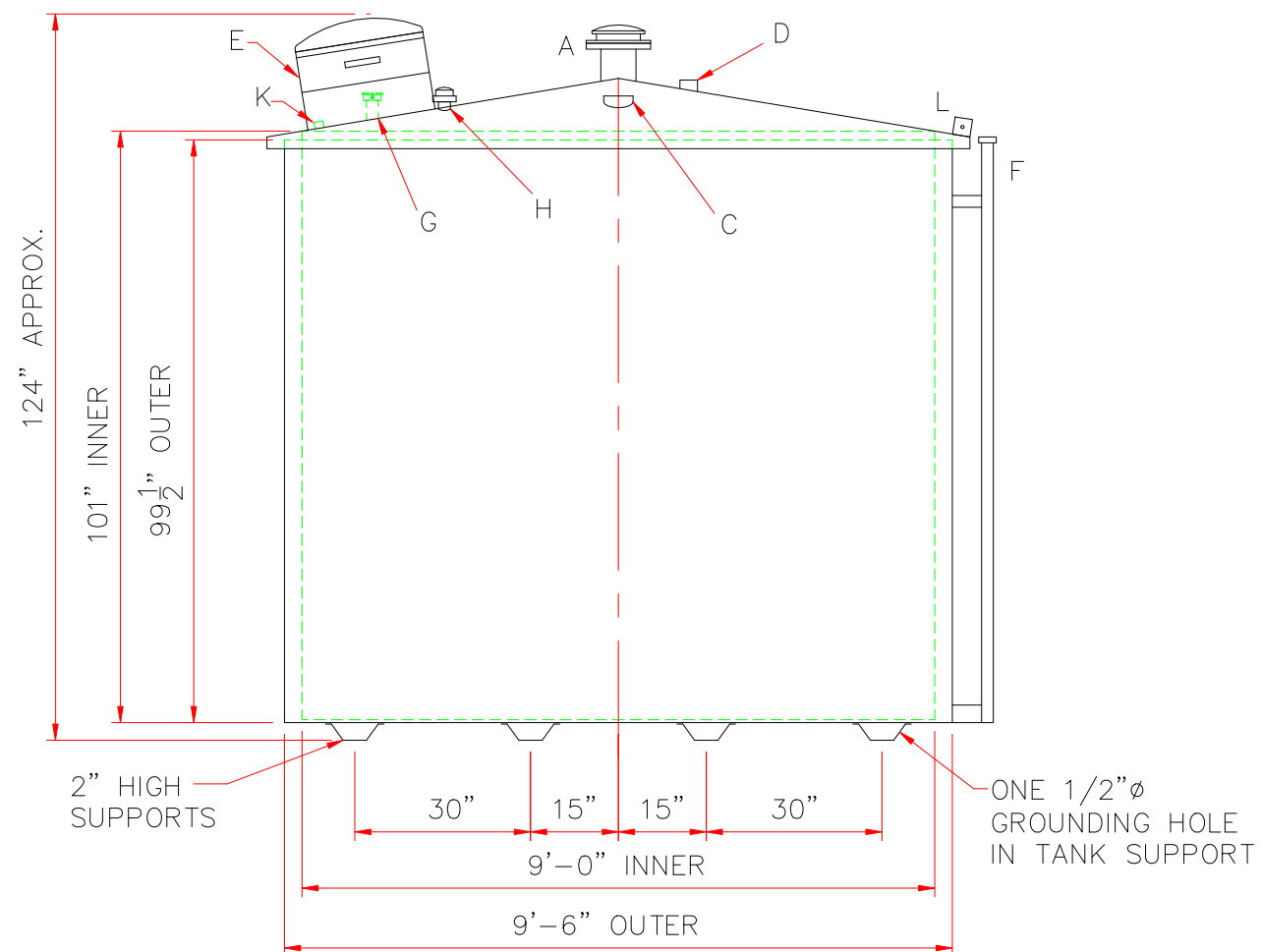
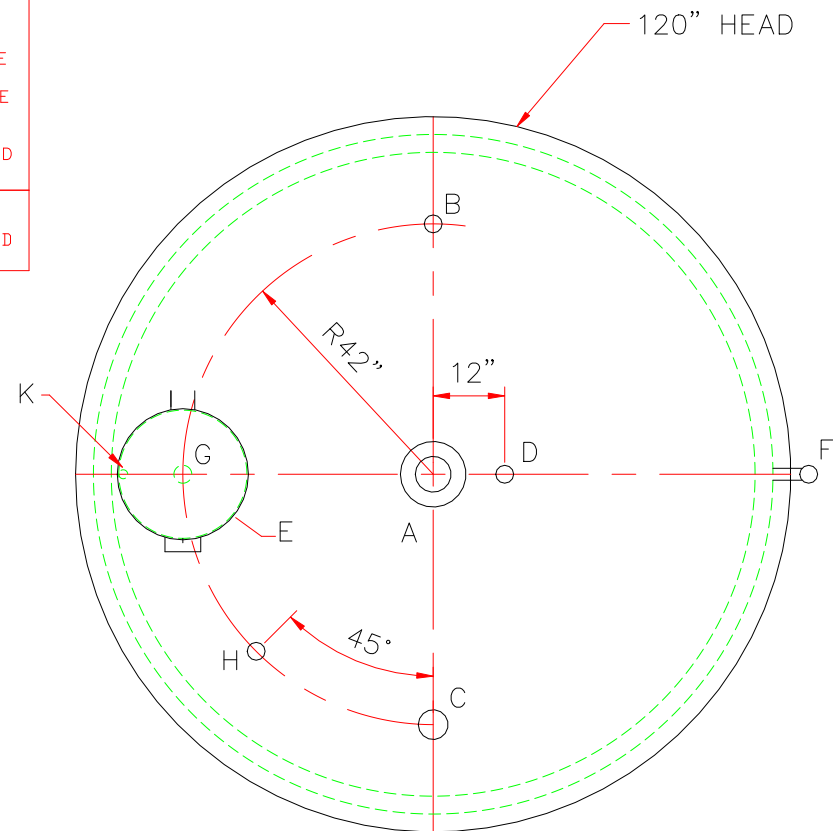


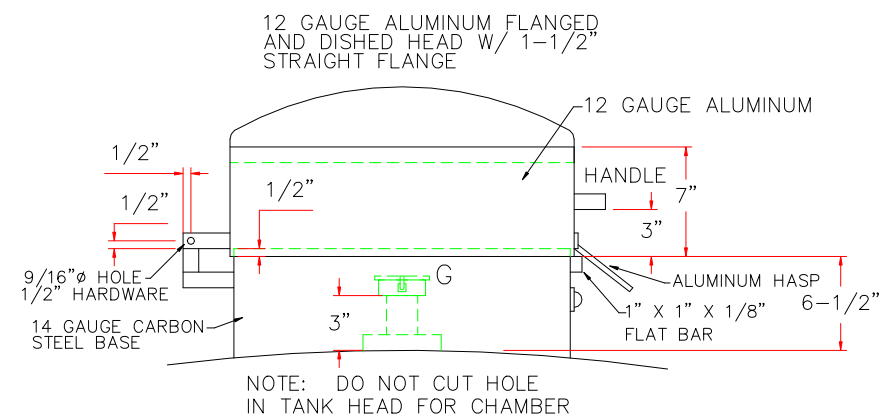
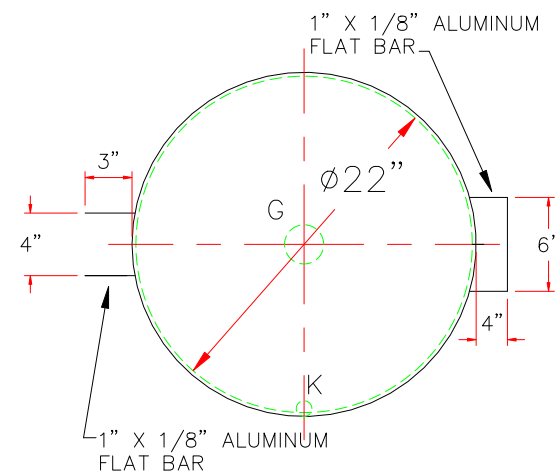
TOUCH UP OF FINISHED PAINT IS
REQUIRED BY INSTALLATION
CONTRACTOR. TOUCH UP PAINT SHIPPED
WITH TANK.



DESIGN DATA	LEGEND	
CAPACITY – 4,000 GALLONS	A	6" FFSO 150# FLANGE – PRIMARY EMERGENCY VENT USE ONLY
NO. REQ. – –	B	2" HALF COUPLING (SUCTION)
OPERATING PRESSURE – ATMOSPHERIC	C	4" COUPLING (SPARE)
SPECIFIC GRAVITY = 1.0	D	2" HALF COUPLING (NORMAL VENT)
TANK MATERIAL – MILD CARBON STEEL	E	22"Ø CHAMBER WITH HINGED ALUMINUM LID SEE DETAIL E APPROXIMATE CHAMBER CAPACITY 7 GAL ACCESS TO FILL
THICKNESS – TOP: 1/4" FLANGED CONE OR STD. FLANGED & DISHED	F	2" MONITOR PIPE
THICKNESS – BALANCE OF TANK – 7 GA	G	4" HALF COUPLING WITH 4" x 2" DOUBLE TAPPED BUSHING W/2" CLOSE NIPPLE & 2" LOCKING FILL CAP
CONSTRUCTION – TANK – LAP WELD OUTSIDE ONLY (INNER TANK IS NOT ATTACHED TO OUTER TUB)	H	2" HALF COUPLING (GAUGE)
CONSTRUCTION – TUB – LAP WELD OUTSIDE ONLY	J	
TANK TEST – TANK ONLY – 5 PSIG	K	1/2" FITTING w/ PLUG – PLACE INSIDE CHAMBER AS CLOSE AS POSSIBLE TO EDGE – CHAMBER DRAIN
TUB TEST – TUB ONLY – WATERTIGHT	L	3" x 3" PLATE w/ 1/2"Ø HOLE (MIN.) HOLE ON CENTER (GROUNDING LUG – ONE REQ'D ON THE LID), HTM SHOP TO DRILL ONE 1/2"Ø IN THE TANK SUPPORT.
FINISH – TUB – INSIDE AND OUT – SHOP PRIMER		
FINISH – TANK – INTERIOR – NONE		
FINISH – TANK – EXTERIOR – SAME AS TUB		
LABEL – UL 142 – APPLY LABEL ON TOP OF TANK		
TANK SUPPORT – 10 GA x 4" WIDE x 2" DEEP PRESSBRAKE "U" PATTERN		

SHIP LOOSE: (INSTALLATION BY OTHERS)

- (1) GAUGE
- (1) 2"Ø x 96" LONG GALVANIZED PIPE (T.B.E.)
- (1) 2"Ø MUSHROOM VENT
- (1) 6" EMERGENCY VENT



DETAIL E

		<h1>Highland Tank</h1>	
<p>UNLESS NOTED, TOLERANCES ARE $\pm 1"$</p>			
<h2>4,000 GAL PETRO HOPPER</h2>			
<p>CUSTOMER:</p>			
<p>PROJECT:</p>			
<p>QUOTE NO:</p>		<p>CHK'D BY:</p>	
<p>SCALE: $3/8"=1'-0"$</p>	<p>DATE:</p>	<p>DWG. BY:</p>	<p>DWG. NO:</p>
		<h1>4000PH</h1>	