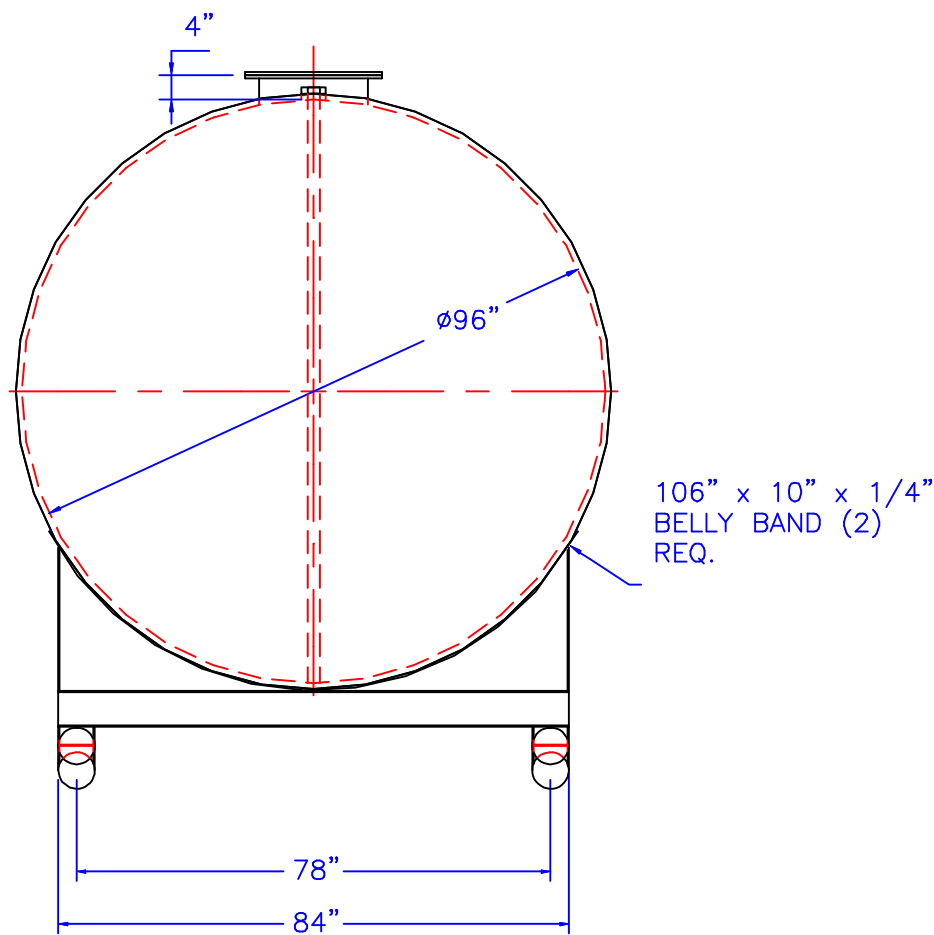
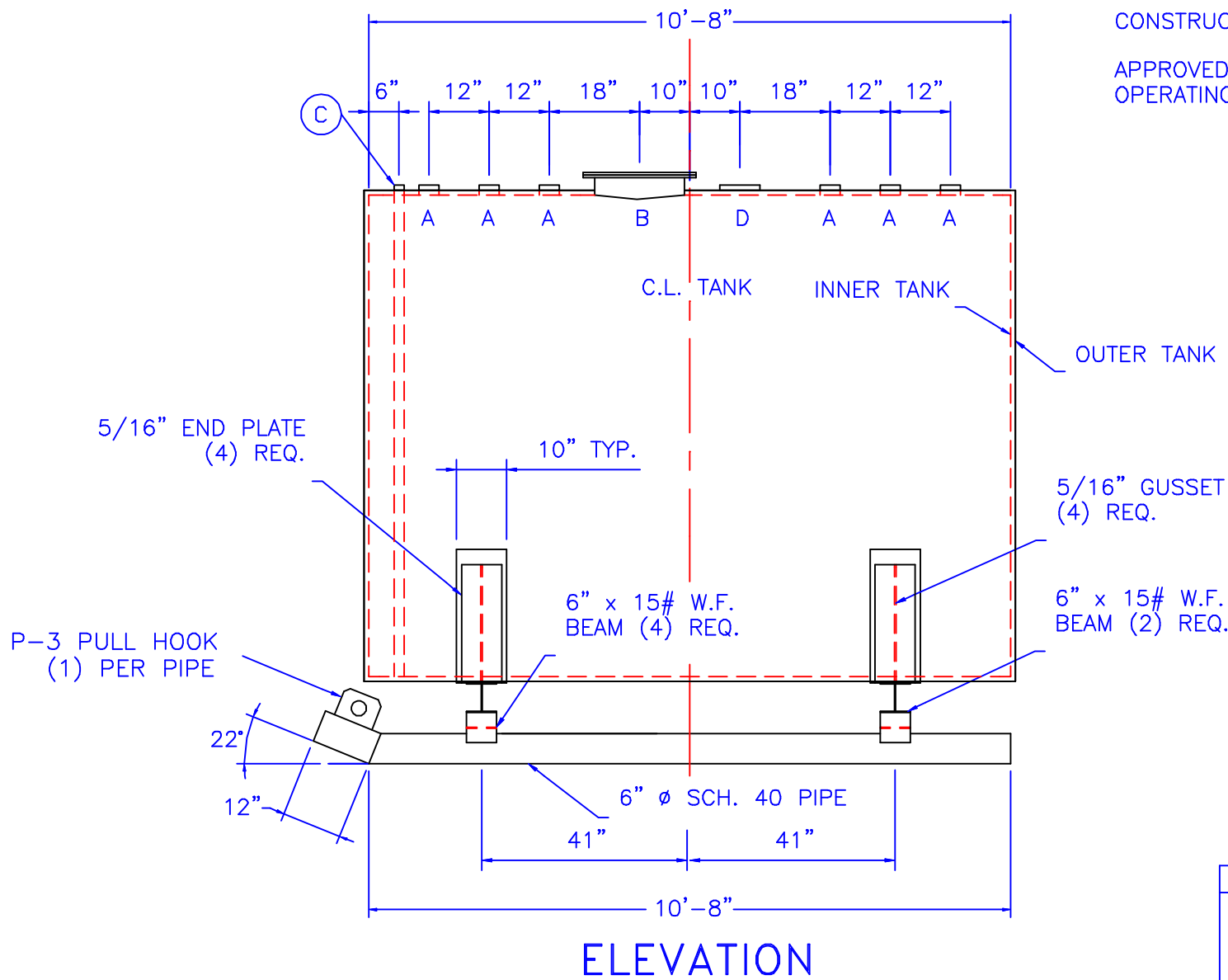


NOTE :  
ALL RIGHTS RESERVED. THIS DRAWING OR ANY PART THEREOF MUST NOT BE REPRODUCED IN ANY FORM WITHOUT THE WRITTEN PERMISSION OF HIGHLAND TANK.  
HIGHLAND TANK SHALL BE RESPONSIBLE ONLY FOR ITEMS INDICATED ON THIS FABRICATION DRAWING UNLESS OTHERWISE NOTED. CUSTOMER IS RESPONSIBLE FOR VERIFYING CORRECTNESS OF SIZE / LOCATION OF FITTINGS , ACCESSORIES & COATINGS SHOWN ON THIS DRAWING



END VIEW

- FITTING SCHEDULE
- A= 4"  $\phi$  NPT
  - B= 18"  $\phi$  LOOSE BOLT MANHOLE FOR PRIMARY EMERGENCY VENT
  - C= 2"  $\phi$  NPT (FITTING FOR LEAK DETECTION)
  - D= 8"  $\phi$  FULL COUPLING FOR SECONDARY EMERGENCY VENT (NOT TO PENETRATE INNER TANK)



ELEVATION

- GENERAL NOTES
- CAPACITY : 4000 GALLONS
  - TYPE : I 360 DOUBLE WALL, ABOVEGROUND HEAVY DUTY SKID
  - NO. REQ. : (1)
  - MATERIAL : MILD CARBON STEEL
  - TEST : 5 P.S.I.
  - MIN. GAUGE OR THICKNESS (PER U.L. 142):
  - INNER HEADS : 5/16" OUTER HEADS : 7 GA.
  - INNER SHELL : 1/4" OUTER SHELL : 7 GA.
  - PAINT :
    - INTERIOR : NONE
    - EXTERIOR : RED PRIMER
  - CONSTRUCTION : FLAT FLANGED HEADS, LAP WELD ALL EXTERIOR SEAMS ONLY
  - APPROVED LABELS : U.L. 142
  - OPERATING PRESSURE- ATMOSPHERIC

REVISIONS				
<div><div><div><div><div><span></span></div><div>HIGHLAND TANK &amp; MFG. CO.</div></div><div><div><span></span></div><div>Highland Tank</div></div></div></div></div>				
4000 GALLON ABOVEGROUND HORIZONTAL DOUBLE WALL TYPE I 360 HEAVY DUTY SKID				
CUSTOMER:				
PROJECT:				
QUOTE NO:				CHK'D BY:
SCALE: 3/8"=1'-0"	DATE:	DWG. BY:	DWG. NO.: 04000SKHDDW96	