

GENERAL SPECIFICATIONS

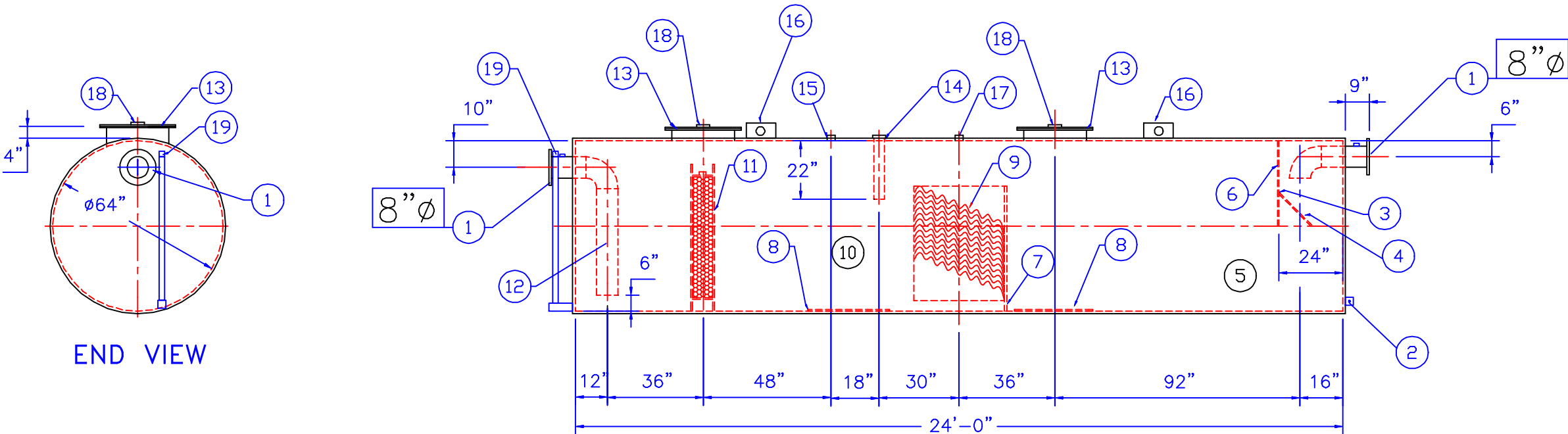
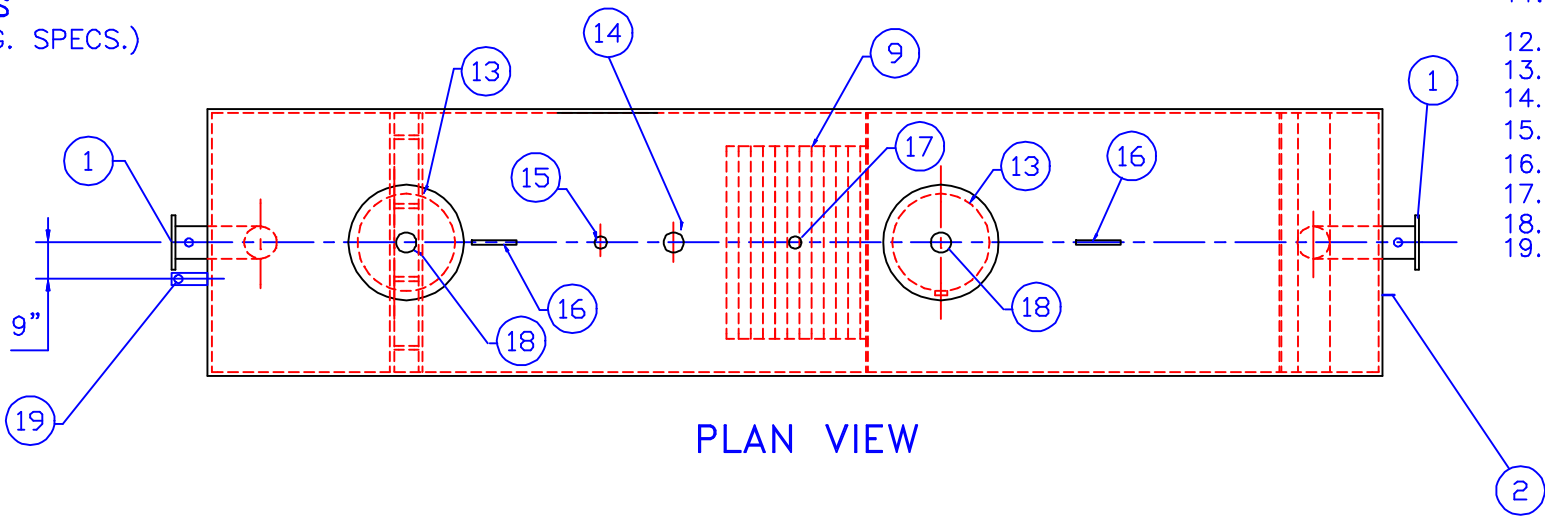
NO. REQ'D: (1)  
CAPACITY: 4,000 GALLONS  
TYPE: HTC, ABOVEGROUND, DOUBLE WALL TYPE I 360  
MATERIAL: MILD CARBON STEEL  
FLOW RATE: 300 GPM  
GAUGE: INNER: OUTER:  
SHELL- 7GA 10GA  
HEADS- 7GA 10GA  
SURFACE PREP: NONE

COATING: MATERIAL THICKNESS  
EXTERIOR- RED PRIMER (PER MFG. SPECS.)  
INTERIOR- NONE

CONSTRUCTION :  
LAP FIT & WELD ALL EXTERIOR SEAMS

PROVIDED EQUIPMENT

- 1. 150# R.F.S.O. FLANGE W/ 2" NPT FOR VENT
- 2. 3" x 3" x 1/4" GROUNDING LUG W/ 5/8" HOLE IN CENTER
- 3. VELOCITY HEAD DIFFUSION BAFFLE
- 4. WEAR PLATE
- 5. SEDIMENT CHAMBER
- 6. UNDERFLOW BAFFLE
- 7. SLUDGE BAFFLE
- 8. STRIKER PLATES
- 9. PARALLEL CORRUGATED PLATE COALESCER
- 10. OIL/WATER SEPARATOR CHAMBER
- 11. 6" THICK COALESCER MATERIAL INSTALLED WITH PULL ROD SHIPPED LOOSE
- 12. OUTLET DOWNCOMER
- 13. 24"Ø MANWAY
- 14. 4"Ø FTG.FOR OIL PUMP-OUT W/ INTERNAL PIPE INSTALLED
- 15. 2"Ø FTG. FOR LEVEL SENSOR
- 16. LIFTING LUG
- 17. 2"Ø FTG. FOR VENT
- 18. 4"Ø FTG. FOR GAUGE WITH
- 19. 2"Ø FTG. FOR LEAK DETECTION



NOTE :  
ALL RIGHTS RESERVED. THIS DRAWING OR ANY PART THEREOF MUST NOT BE REPRODUCED IN ANY FORM WITHOUT THE WRITTEN PERMISSION OF HIGHLAND TANK.  
HIGHLAND TANK SHALL BE RESPONSIBLE ONLY FOR ITEMS INDICATED ON THIS FABRICATION DRAWING UNLESS OTHERWISE NOTED. CUSTOMER IS RESPONSIBLE FOR VERIFYING CORRECTNESS OF SIZE / LOCATION OF FITTINGS , ACCESSORIES & COATINGS SHOWN ON THIS DRAWING

REVISIONS				
<div><div><div>HTGLAND TANK MFG. CO.</div></div><div>Highland Tank</div></div>				
4000 GALLON OIL WATER SEPARATOR HTC, DOUBLE WALL 360, ABOVEGROUND				
CUSTOMER:				
PROJECT:				
QUOTE NO:				CHK'D BY:
SCALE:	DATE:	DWG. BY:	DWG. NO.:	
1/4"=1'-0'			4KHTCDWIAH	