

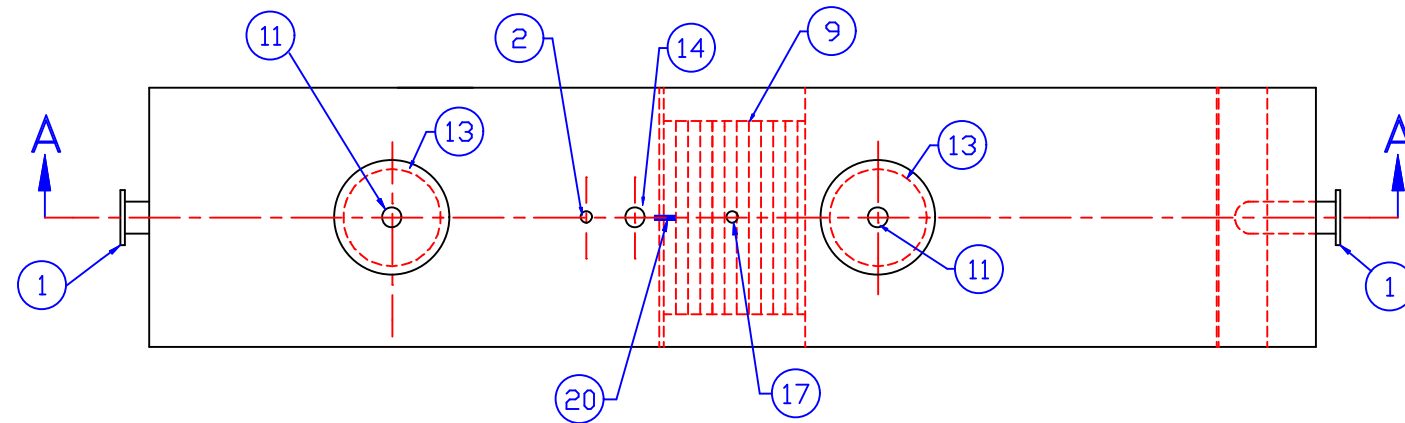
GENERAL SPECIFICATIONS

NO. REQ'D: (1)
 CAPACITY: 4,000 GALLONS
 TYPE: HT, ABOVEGROUND, SINGLEWALL
 MATERIAL: MILD CARBON STEEL
 FLOW RATE: 400 GPM
 GAUGE:
 SHELL- 7GA
 HEADS- 7GA
 SURFACE PREP:
 SSPC NO.6 BLAST ALL EXTERIOR SURFACES

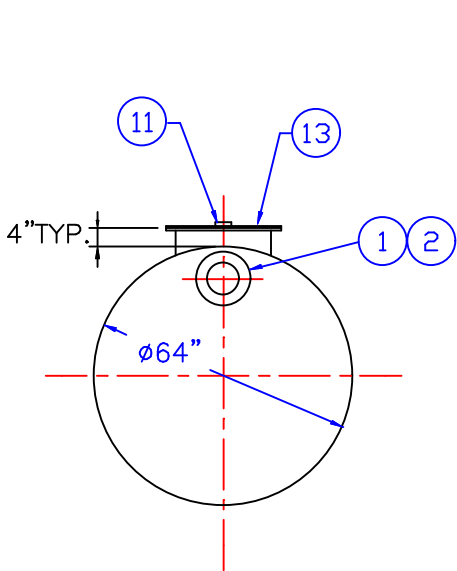
COATING:	MATERIAL	THICKNESS
EXTERIOR-	RED PRIMER	(5 MILS)
INTERIOR-	NONE	

PROVIDED COMPONENTS

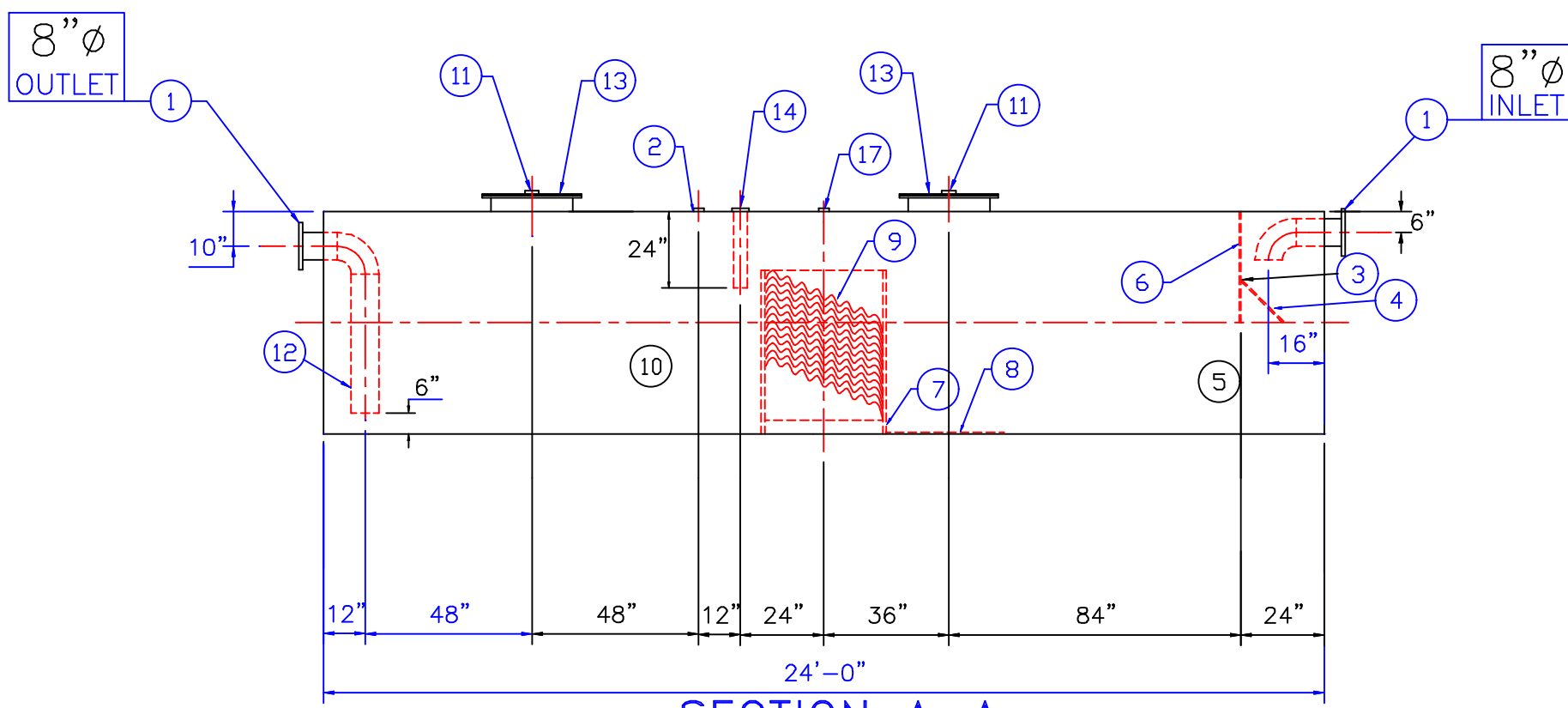
1. 150# R.F.S.O. FLANGE
2. 2"Ø FTG. FOR LEVEL SENSOR W/ RISER PIPE SHIPPED LOOSE
3. VELOCITY HEAD DIFFUSION BAFFLE
4. WEAR PLATE
5. SEDIMENT CHAMBER
6. UNDERFLOW BAFFLE
7. SLUDGE BAFFLE
8. STRIKER PLATES
9. PARALLEL CORRUGATED PLATE COALESCER (GALVANIZED)
10. OIL/WATER SEPARATOR CHAMBER
11. 4"Ø NPT FTG. FOR GAUGE WITH PLUG-TYP. BOTH MANWAYS
12. OUTLET DOWNCOMER
13. 24"Ø MANWAY WITH BOLT-ON EXTENSION SHIPPED LOOSE
14. 4"Ø FTG. FOR OIL PUMP-OUT W/ INTERNAL PIPE INSTALLED & RISER PIPE SHIPPED LOOSE



PLAN VIEW



END VIEW



SECTION A-A

NOTE :
 ALL RIGHTS RESERVED. THIS DRAWING OR ANY PART THEREOF MUST NOT BE REPRODUCED IN ANY FORM WITHOUT THE WRITTEN PERMISSION OF HIGHLAND TANK.
 HIGHLAND TANK SHALL BE RESPONSIBLE ONLY FOR ITEMS INDICATED ON THIS FABRICATION DRAWING UNLESS OTHERWISE NOTED. CUSTOMER IS RESPONSIBLE FOR VERIFYING CORRECTNESS OF SIZE / LOCATION OF FITTINGS , ACCESSORIES & COATINGS SHOWN ON THIS DRAWING

REVISIONS			
		<h1>Highland Tank</h1>	
		4,000 GALLON, HT, OIL WATER SEPARATOR ABOVEGROUND, SINGLE WALL	
CUSTOMER:			
PROJECT:			
QUOTE NO:			CHK'D BY:
SCALE: 1/4"=1'-0"	DATE: 9-14-99	DWG. BY: MM	DWG. NO.: 4K-SW-HT