

**NOTE:**  
STANDARD TANK HEIGHT SHOWN  
CUSTOMER TO VERIFY ACTUAL  
HEIGHT REQUIRED

#### GENERAL SPECIFICATIONS

QUANTITY: ONE (1)  
MODEL: MGI-500N CS  
MATERIAL: 7 GA CARBON STEEL  
SINGLE-WALL CONSTRUCTION  
SURFACE PREP: SSPC-SP 10 BLAST ALL SURFACES  
INT. & EXT. COATING: POLYURETHANE  
MAXIMUM FLOW RATE: 500 GPM  
STATIC WATER CAPACITY: 506 GAL  
GREASE HOLDING CAPACITY: 1,000 LBS  
APPROXIMATE DRY WEIGHT: 1,450 LBS

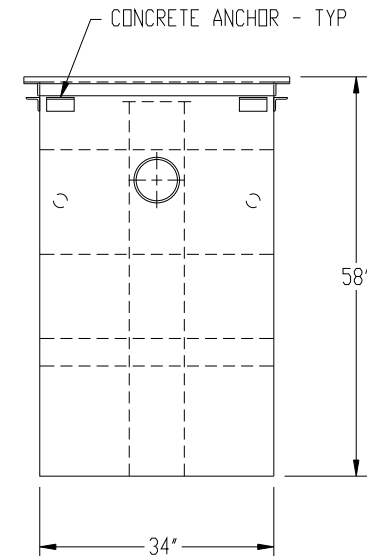
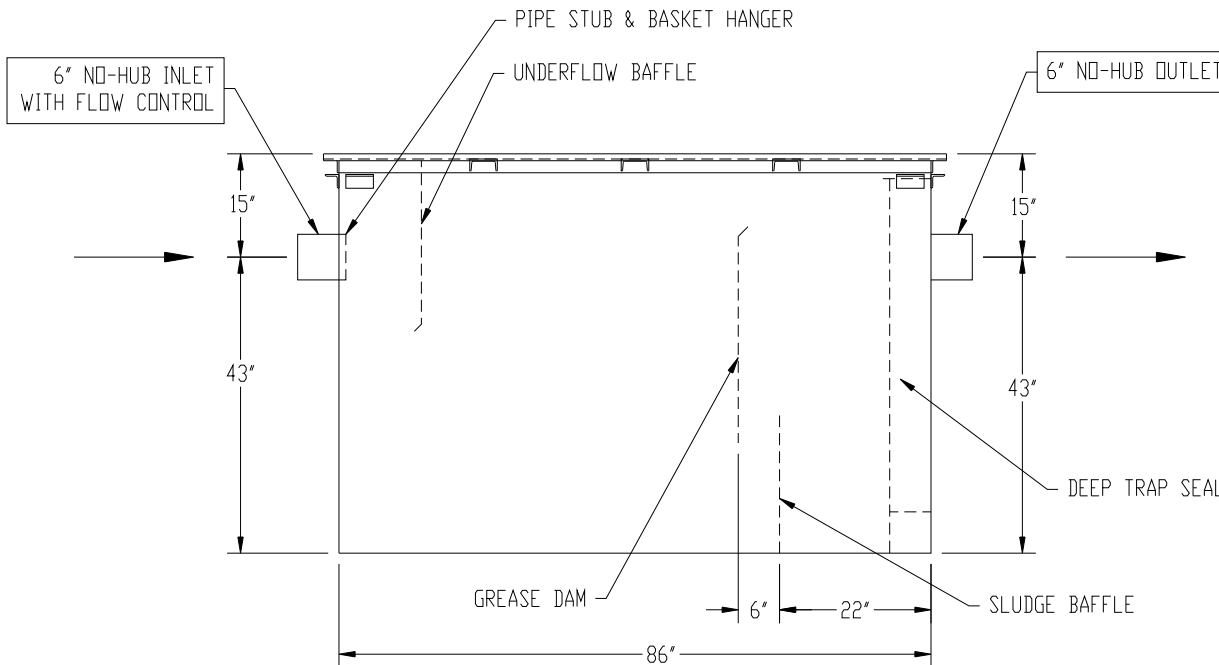
**NOTE:** ALL PLUMBING CONNECTIONS MUST COMPLY WITH LOCAL CODES AND REGULATIONS.

#### CUSTOMER APPROVAL

THE CUSTOMER HAS REVIEWED THIS DRAWING AND VERIFIED THE ACCURACY OF ALL INFORMATION AND DIMENSIONS.

SIGNED: \_\_\_\_\_

DATE: \_\_\_\_\_



#### REVISIONS



**Highland Tank®**

MANUAL GREASE INTERCEPTOR  
MGI-500N CS

CUSTOMER: \_\_\_\_\_

PROJECT: \_\_\_\_\_

QUOTE NO: \_\_\_\_\_

SCALE: \_\_\_\_\_ DATE: 6/6/12

DWG. BY: MGS

CHK'D BY: \_\_\_\_\_

DWG. NO: MGI-500N CS

DIMENSION TOLERANCE:  $\pm 1"$

**NOTE:**  
ALL RIGHTS RESERVED. THIS DRAWING, OR ANY PART THEREOF, MUST NOT BE REPRODUCED IN ANY FORM WITHOUT WRITTEN PERMISSION FROM HIGHLAND TANK. UNLESS OTHERWISE NOTED, HIGHLAND TANK SHALL BE RESPONSIBLE ONLY FOR ITEMS INDICATED ON THIS FABRICATION DRAWING. THE CUSTOMER IS RESPONSIBLE FOR VERIFYING THE CORRECTNESS OF THE TYPE, SIZE, AND LOCATION OF ALL FITTINGS, ACCESSORIES, AND COATINGS SHOWN ON THIS DRAWING.