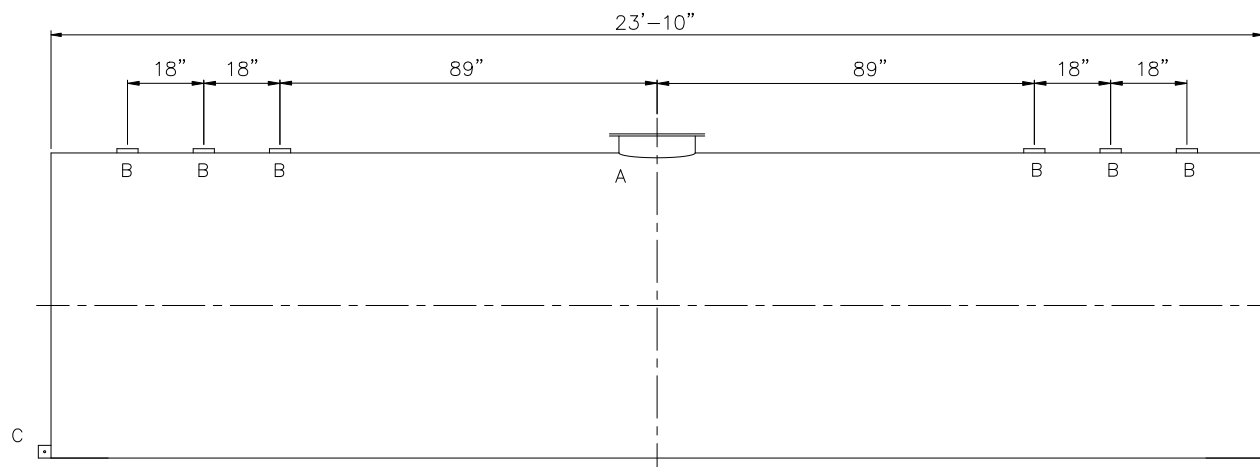


SHIPPING LUGS AS NEEDED

Technical drawing of a circular structure, likely a tank or vessel, showing a diameter dimension of $\text{Ø}6'-0''$. The drawing includes a top view (circle) and a side elevation (rectangle with a semi-circular end). The diameter is indicated by a line passing through the center of the circle, with arrows pointing to the circumference and the dimension $\text{Ø}6'-0''$ written above the line.



<u>DESIGN DATA</u>
CAPACITY – 5000 GALLON
TYPE – SINGLE WALL
NO. REQ. – –
OPERATING PRESSURE – ATMOSPHERIC
SPECIFIC GRAVITY = 1.0
TANK MATERIAL – MILD CARBON STEEL
THICKNESS – HEADS: 1/4”
THICKNESS – SHELL: 1/4”
CONSTRUCTION – LAP WELD OUTSIDE ONLY –
TANK TEST – 5 PSIG –
INT. FINISH – NONE –
EXT. FINISH – SHOP PRIMER –
LABEL – UL 142

LEGEND	
A	18" LOOSE BOLT MANWAY PRIMARY EMERGENCY VENT
B	4" FITTING
C	FB-3"x 1/4"x3" WITH 5/8"Ø HOLE ON CL (GROUNDING LUG)
D	—
E	—
F	—

